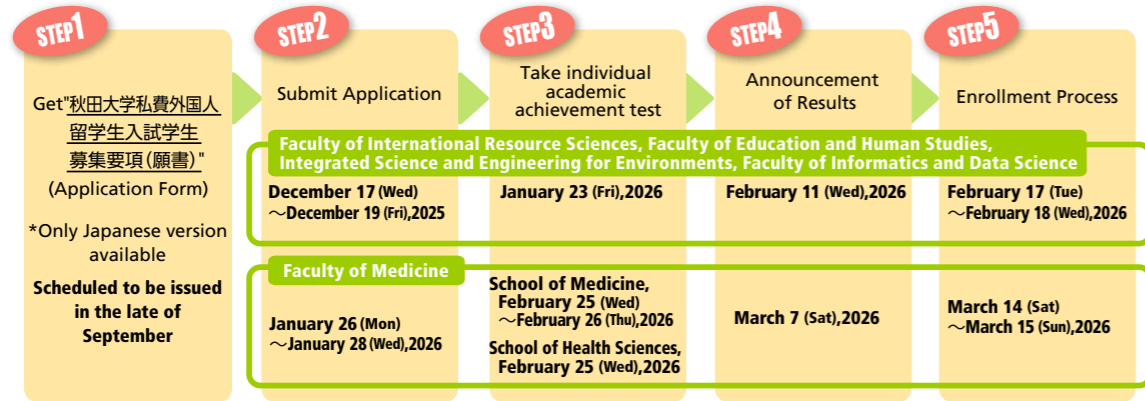


Undergraduate Application (for self-funded international students)

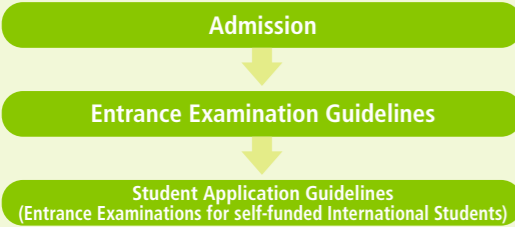
Applicants must take the Examination for Japanese University Admission for International Students conducted by Japan Student Services Organization (JASSO) prior to submitting their application.



How to request the Application Form ("秋田大学私費外国人留学生入試学生募集要項")

*Only Japanese version available

Akita University Website for Applicants
<https://www.akita-u.ac.jp/eng/exam/>



Graduate School Application

Conditions and schedule for application vary between each graduate school. Please see the websites of each graduate school for information.

- Graduate School of International Resource Sciences : <https://www.akita-u.ac.jp/shigen/graduate/info.html>
- Graduate School of Medicine : <http://www.med.akita-u.ac.jp/department/gs/kenkyu-selection.php>
- Graduate School of Engineering Science : <https://www.riko.akita-u.ac.jp/graduate/prospectus/>

Access



- From Tokyo**
 - Haneda Airport - Akita Airport (1hr 5mins)
 - JR Tokyo Station - Akita Station (approx. 4hrs by Komachi, Akita Shinkansen)
- From Nagoya**
 - Chubu Int'l Airport - Akita Airport (approx. 1hr 25mins)
- From Osaka**
 - Osaka Int'l Airport (Itami) - Akita Airport (approx. 1hr 20mins)
- From Sapporo**
 - New Chitose Airport - Akita Airport (55mins)
 - Sapporo Okadama Airport - Akita Airport (1hr 5mins)



Akita University Global Center for Higher Education

1-1 Tegatagakuen-machi, Akita City, Akita 010-8502
TEL+81-18-889-2258 FAX+81-18-889-3012
E-mail : ryugaku@jimu.akita-u.ac.jp

<https://www.akita-u.ac.jp/honbu/global/en/index.html>



Published in June 2025



Guide for International Students



Akita University

Akita University

Akita University is a national university consisting of Faculty of International Resource and Sciences, Faculty of Education and Human studies, Faculty of Medicine, Faculty of Integrated Science and Engineering for Environments, Faculty of Informatics and Data Science and the Graduate Schools. Akita University was established in 1949 from Akita Normal School, Akita Normal School for Youth, and Akita Mining College.

Student Figures (as of May 1, 2025) ◆ Students: 5,135 (Undergraduate 4,326, Graduate 809)
◆ International Students: 253 (Undergraduate 154, Graduate 99)
*The figure includes degree seeking international students.

| Faculties | Total number admitted | International Students | | |
|---|-----------------------|------------------------|--------------------|-------|
| | | Degree-seeking | Non Degree-seeking | Total |
| International Resource Sciences | 514 | 30 | 0 | 30 |
| Education and Human Studies | 875 | 7 | 23 | 30 |
| Medicine | 1,214 | 1 | 0 | 1 |
| Integrated Science and Engineering for Environments/Engineering Science | 1,616 | 89 | 2 | 91 |
| Informatics and Data Science | 107 | 2 | 0 | 2 |
| Total | 4,326 | 129 | 25 | 154 |

| Graduate Schools | Total number admitted | International Students | | |
|----------------------------------|-----------------------|------------------------|--------------------|-------|
| | | Degree-seeking | Non Degree-seeking | Total |
| International Resource Sciences | 156 | 65 | 1 | 66 |
| Education and Human Studies | 49 | 0 | 0 | 0 |
| Medicine | 230 | 6 | 0 | 6 |
| Engineering Science | 353 | 24 | 3 | 27 |
| Advanced Health Care Engineering | 21 | 0 | 0 | 0 |
| Total | 809 | 95 | 4 | 99 |

Overseas Partner Universities (as of May. 1, 2025) Inter-University Agreements

● 80 Universities and Institutions (37 Countries and Regions)

| Countries/Regions | Universities | Student Exchange Agreement | Countries/Regions | Universities | Student Exchange Agreement | |
|-------------------|--|----------------------------|--|--|---|---|
| India | Indian Institute of Technology Madras | ● | Asia | New Mongol Academy | — | |
| | Vellore Institute of Technology | ● | | MUST Kosen College of Technology, Mongolian University of Science and Technology | — | |
| | Institut Teknologi Bandung | ● | | Institute of Engineering and Technology Mongol Kosen College of Technology | — | |
| | Trisakti University | — | | New Mongol College of Technology | — | |
| | Gadjah Mada University | — | | Kenya | Kenyatta University | ● |
| | Universitas Pertamina | ● | | Botswana | Botswana International University of Science and Technology | ● |
| | Padjadjaran University | — | | University of Botswana | ● | |
| | Hanbat National University | ● | | Eduardo Mondlane University | ● | |
| | Wonkwang University | ● | | Mozambique | Tete Polytechnic Institute for Higher Education | ● |
| | Kangwon National University | ● | | Republic of South Africa | The University of the Witwatersrand | — |
| Korea | Korea Maritime & Ocean University | — | Zambia | University of Zambia | — | |
| | Chulalongkorn University | ● | Tanzania | University of Dar es Salaam | — | |
| Thailand | Suranaree University of Technology | ● | Australia | Griffith University | — | |
| | Chiang Mai University | — | Curtin University | — | | |
| Taiwan | Lunghwa University of Science and Technology | ● | Papua New Guinea | Papua New Guinea University of Technology | — | |
| | National Taiwan University | ● | USA | St. Cloud State University | ● | |
| Asia | National Changhua University of Education | ● | Canada | Memorial University of Newfoundland | ● | |
| | National Cheng Kung University | ● | Chile | University of Santiago | ● | |
| | Chang Jung Christian University | ● | Israel | University of Haifa | ● | |
| | Heilongjiang University | ● | UAE | United Arab Emirates University | — | |
| | Central South University | ● | Italy | University of Cagliari | ● | |
| | Liaoning Technical University | ● | University of Ferrara | ● | | |
| | Dalian Minzu University | ● | Uzbekistan | Tashkent State Technical University/Uzbek Japan Innovation Center of Youth (UJICY) | — | |
| | Lanzhou University | ● | Kazakhstan | D. Serikbayev East Kazakhstan Technical University | ● | |
| | Jilin University | ● | Nazarbayev University | — | | |
| | Northeastern University | ● | Kyrgyz | Razzakov Kyrgyz State Technical University | — | |
| China | Donghua University | ● | Sweden | Luleå University of Technology | ● | |
| | Huazhong University of Science and Technology | ● | Tajikistan | Mining metallurgical Institute of Tajikistan | — | |
| | Chang'an University | ● | Tajik National University | — | | |
| | Beihua University | ● | Germany | Freiberg University of Mining and Technology | ● | |
| | Jiaxing University | ● | Finland | Lapland University of Applied Sciences | ● | |
| | Northwest Normal University | ● | Kajaani University of Applied Sciences | ● | | |
| | University of the Philippines Diliman | ● | Poland | Kracow University of Economics | ● | |
| | University of the Philippines Manila | ● | Romania | University of Bucharest | ● | |
| | University of the Philippines Los Baños | ● | Bosnia and Herzegovina | University of Banja Luka | — | |
| | Hanoi University of Science and Technology | ● | Belgium | VIVES University of Applied Sciences | — | |
| Vietnam | University of Transport and Communications | ● | Ukraine | Borys Grinchenko kyiv Metropolitan University | ● | |
| | University of Yangon | — | | | | |
| Malaysia | University of Malaya | ● | | | | |
| Myanmar | University of Yangon | — | | | | |
| Mongolia | Mongolian University of Science and Technology | ● | | | | |
| | Mongolian National University of Education | ● | | | | |

Inter-Faculty Agreements

● 46 Faculties (25 Countries and Regions)

| Faculties | Countries/Regions | Faculties, Universities | Student Exchange Agreement | |
|--|----------------------------------|--|--|---|
| Graduate School of International Resource Sciences | Asia | Indonesia | Faculty of Engineering, Hasanuddin University | — |
| | | | Faculty of Geological Engineering, Universitas Padjadjaran | ● |
| | | | Faculty of Mineral Technology Universitas Pembangunan Nasional "Veteran" Yogyakarta | — |
| | | | Research Center for Geological Resources, Research Organization for Earth Sciences and Maritime, National Research and Innovation Agency | — |
| | | | Faculty of Science, Kasetsart University | — |
| | Thailand | Mongolia-Japan Center for Human Resources Development | — | |
| | Europe (including NIS countries) | Kazakhstan | K..I.Satbayev Kazakh National Research Technical University | — |
| | | Serbia | Technical Faculty in Bor, University of Belgrade | — |
| | | | Chemistry, Technology and Metallurgy, National Institute of the University of Belgrade | — |
| | | Poland | AGH University of Krakow | — |
| Uzbekistan | | Uzbek-Japan Innovation Center of Youth (UJICY) | — | |
| North America | Tajikistan | University of Geological Sciences of Uzbekistan (Uzbek-Japan Innovation Center of Youth (UJICY)) | — | |
| | Canada | Navoi State University of Mining and Technologies | — | |
| Faculty of Education and Human Studies | Tajikistan | Centre of Innovative Development of Science and New Technologies, National Academy of Sciences of Tajikistan | — | |
| | Canada | Institut National de la recherche scientifique, Université du Québec | — | |
| Graduate School of Medicine | Asia | Faculty of Engineering, University of Alberta | — | |
| | Korea | Korean Language School of Sungkonghoe University | — | |
| Akita University Hospital | Asia | China | Beijing Hospital, Ministry of Health | — |
| | | Singapore | Alice Lee Center for Nursing Studies, Yong Loo Lin School of Medicine, National University of Singapore | ● |
| | | Thailand | School of Nursing Suranaree University of Technology | ● |
| | | Indonesia | Faculty of Medicine, Universitas Islam Nejeri, Syarif Hidayatullah Jakarta | ● |
| | | France | The Faculty of Medicine of Lille 2 University | ● |
| | Europe | Belgium | Bachelor in Nursing & Bachelor in Occupational Therapy VIVES University of Applied Sciences | ● |
| | | Bosnia and Herzegovina | Faculty of Medicine, University of East Sarajevo | ● |
| | | USA | John A. Burns School of Medicine, University of Hawaii | — |
| | | | MD Anderson Cancer Center, University of Texas | — |
| | | China | The First Hospital of Lanzhou University | — |
| Graduate School of Engineering Science | Asia | Taiwan | College of Engineering Minghsin University of Science and Technology | ● |
| | | | Department of Precision Instruments and Mechatronics, Tsing Hua University | ● |
| | | | Department of Chemistry, Tsing Hua University | — |
| | | | School of Materials Science and Engineering, Tongji University | ● |
| | | | Shanghai Key Lab of D&A for Metal Functional Materials, Tongji University | ● |
| | Africa | India | The CSIR-Indian Institute of Chemical Technology | — |
| | | Malaysia | Malaysia Japan International Institute of Technology, Universiti Teknologi Malaysia | — |
| | | | Universiti Kebangsaan Malaysia | — |
| | | Thailand | Thai-Nichi Institute of Technology | ● |
| | | Tunisia | Faculty of Technology, University of Sfax | ● |
| Future Cooperative Research Organization | Oceania | New Zealand | Faculty of Design and Creative Technologies, Auckland University of Technology (AUT) | — |
| | | | Department of Chemistry, University of Otago | — |
| | | USA | Montana College of Mineral Science and Technology | — |
| | | Hungary | Faculty of Informatics, University of Debrecen | — |
| | | Czech | Faculty of Information Technology, Brno University of Technology | ● |
| | Europe | Slovakia | Faculty of Mathematics, Physics and Informatics, Comenius University | — |
| | | Great Britain | Faculty of Engineering Science, Aston University | ● |
| | | Poland | The AGH University of Krakow | ● |
| | | China | Shanghai Key Lab of D&A for Metal Functional Materials, Tongji University | — |
| | | | | |

※Student Exchange based on Inter-Faculty Agreements are vary by faculty.

春 Spring

夏 Summer

Akita

An abundance of nature and traditional culture changing along with the four seasons.

Akita Prefecture is located in northern Honshu on the Sea of Japan. It offers a rich natural environment including the Shirakami mountain range (a World Heritage site), Lake Tazawa (the deepest lake in Japan), Hachimantai, and Oga Peninsula, where the four seasons can be distinctly experienced and enjoyed. Akita's seasonal festivities include the Sakura (cherry blossom) festivals in spring, Kanto festival (one of the three great Tohoku festivals) in summer, viewing fall foliage in autumn, and a variety snow sports (skiing, snowboarding, etc.) in winter.

The university's campus is located in Akita City with a population of 300,000. It is the capital of Akita Prefecture, and is also the prefecture's political and economic center. It is convenient in terms of transportation and has a lower cost of living than Tokyo. Students find the city a very suitable environment for daily life.



Kanto Festival

Held every year from August 3 – 6 in Akita City. The largest Kanto Pole is 12 meters in height and weighs approximately 50 kgs. Balancing the giant Kanto using their hands, lower back and forehead, the dancers display their skills while competing with one another. The university also has a kanto team.



Namahage Event

An ethnic tradition originating from the Oga Peninsula, held on New Year's Eve. Namahage are said to be messengers of the gods.



Lake Tazawa

Japan's deepest lake, located in the city of Semboku (Maximum depth 423.4 m). It is approximately 1 hour away from the university and it is a great place to enjoy canoeing or rafting.



Kiritampo

Kiritampo, part of Akita's regional cuisine, is rice that has been mashed and wrapped around a skewer, then toasted and finally cut into easy-to-eat pieces. When it is added to a hot pot with chicken, vegetables, mushrooms, etc. it is called "Kiritampo Nabe" (Kiritampo hot pot).



Onsen (hot springs)

Akita has many hot springs, the most famous being Nyuto Hot Spring Village and Tamagawa Hot Spring. This photo features the open-air bath at Nyuto Hot Spring Village.

秋 Autumn

冬 Winter

Undergraduate

*All tentative names are preliminary and subject to change.

Interview Movies with Undergraduate Students

Faculty of International Resource Sciences



“Faculty of International Resource Sciences” was established in 2014 with the aim of developing human resources who can play an active role in the field of resources on a global scale, against the backdrop of the resource issues currently facing the world and the progress of economic globalization. Based on the education in natural resources that Akita University has cultivated, we will strengthen our partnerships with universities and companies in Japan and overseas, and provide distinctive education such as specialized education in English, mandatory overseas natural resources fieldwork, and education that integrates the humanities and sciences.

There are three courses : “**Resource Policy and Management**” in which students study resources from the viewpoint of humanities and social sciences, including political science and economics, business and international cooperation with resource-rich countries, and the cultures, histories, and religions of resource-rich regions that form the background of such cooperation; “**Earth Resource Science**” in which students learn about global-scale natural phenomena that produce resources, earth history, materials that make up the earth, and their distribution and exploration; and “**Earth Resource Engineering and Environmental Science**” in which students study specialized fields related to resource development and production technology in harmony with the earth and its environment, recycling and smelting technology, and environmental conservation.

- Department of International Resource Sciences
- Resource Policy and Management
- Earth Resource Science
- Earth Resource Engineering and Environmental Science

Faculty of Education and Human Studies



The Faculty of Education and Human Studies consists of two departments: the Department of School Education, which prepares future elementary and junior high school teachers, and the Department of Regional Studies and Humanities, which fosters human resources dedicated to regional development. Akita is known for its top-level academic performance in elementary and junior high schools across Japan. At the Department of School Education, students actively engage in hands-on training with cutting-edge teaching methods through partnerships with leading schools. In the Department of Regional Studies and Humanities, students explore a wide range of disciplines in the social and human sciences, while also gaining practical experience through community-based classes and fieldwork. The department also offers courses in psychology, which can lead to professional certification.

- Department of School Education
 - Course for Elementary and Secondary Education (Program: Compulsory School Teachers, English Language Teachers, Science and Mathematics Teachers)
 - Course for Special Needs Education Teachers
 - Course for Child Development and Education
- Department of Regional Studies and Humanities
 - Program in Regional Studies
 - Program in International Culture Studies
 - Program in Psychological Studies

Faculty of Medicine



The Faculty of Medicine fosters a richly educated humanity, flexible adaptability and problem-solving skills to respond to academic advances, and an international outlook to contribute to the health and well-being of people based on a thorough understanding of medicine and health sciences. In addition to working as a medical professional in a clinical setting, students also have the option of entering graduate school to become advanced professionals in medical care, including researchers and educators.

- School of Medicine
- School of Health Sciences
 - Nursing Course
 - Physical Therapy Course
 - Occupational Therapy Course

Interview with Engineering Science students ↓

Faculty of Integrated Science and Engineering for Environments



This faculty promotes education and research in response to the latest science and environmental technology by strengthening education related to the realization of a green society through comprehensive study of science and technology. Also cross-sectional education is strengthened to develop specialist knowledge and skills in science and technology, as well as the ability to co-create with others with different specializations. The Faculty consists of the following three departments (8 courses).

- Department of Applied Chemistry and Bioscience
 - Course of Bioscience
 - Course of Organic and Polymer Chemistry
 - Course of Applied Chemistry
- Department of Mathematical and Physical Science for Environments
 - Course of Mathematical and Earth Environmental Science
 - Course of Functional Devices and Materials Science
- Department of Engineering for Social Systems
 - Course of Mobility Engineering
 - Course of Electrical Systems Engineering
 - Course of Civil and Environmental Engineering

Faculty of Informatics and Data Science

In April 2025, the Faculty of Informatics and Data Science was established to provide a structured education in informatics and data science. Students gain advanced knowledge in information technology and develop the ability to analyze big data, equipping them to become digital professionals who can solve complex societal issues and create new value in the digital age.

- Department of Informatics and Data Science

Graduate

Graduate School of International Resource Sciences

The Graduate School of International Resource Sciences aims to study global resource problems and stimulate critical and creative thinking to develop strategies to help solve problems of energy and resource development, production and distribution. We strongly encourage international students to apply for this program. All lectures are conducted in English, and research activities mainly consist of discussions in English. Degree completion in English is possible.

- Master's Degree Program
 - Earth Resource Science
 - Earth Resource Engineering and Environmental Science
- Doctoral Degree Program
 - Geosciences, Geotechnology, and Materials Engineering for Resources

Graduate School of Medicine

The Graduate School of Medicine aims to train excellent researchers and highly specialized medical staff who possess an international perspective, and who can promote the most advanced research in medicine, medical, and life sciences, all of which contribute to the development of human health and welfare.

- Master's Degree Program
 - Medical Science
 - Health Sciences
 - Nursing Science
 - Rehabilitation Science
- Doctoral Degree Program
 - Medicine
 - Health Sciences
 - Women and Children's Development Support Sciences
 - Lifestyle Function and Health Support

Graduate School of Engineering Science

The Graduate School of Engineering Science aims to nurture human resources who can systematically acquire advanced specialized knowledge and skills on a fundamental basis, and who can contribute to regional development and the sustainable growth of Japan based on a flexible approach, international perspective and solid ethics.

- Master's Degree Program
 - Life Science
 - Materials Science
 - Mathematical Science and Electrical-Electronic-Computer Engineering
 - Systems Design Engineering
 - Cooperative Major in Sustainable Engineering
 - Doctoral Degree Program
 - Integrated Engineering Science
- The Doctoral Degree Program provides a separate English course in which the entire curriculum is conducted in English.

Graduate School of Advanced Healthcare Engineering

The Graduate School of Medicine, the Graduate School of Engineering Science and the “Advanced Research Center for Geriatric Gerontology, Akita University (ARGG)” will collaborate to establish an educational curriculum that covers health care in daily life, medical diagnosis, treatment, and prognosis for people living in super-aging societies. The purpose of this program is to contribute to a vibrant super-aging society by solving problems that arise in the field through the use of ICT and data science, and to develop human resources who can disseminate the results of their research on new devices and systems to the world.

- Master's Degree Program
 - Engineering

Admissions

1. Self-funded International Students

| Category | Purpose | Notes | Application |
|---|-----------------------------------|--|--|
| Undergraduate Students | Degree Seeking (Bachelor) | Must earn required credits and be enrolled at the University for minimum of 4 years (6 years for medical students). | See the attached "Selection Criteria for Self-funded International Students" |
| Graduate Students | Degree Seeking (Master/Doctorate) | Take required courses, pass final exams, and pass thesis review. Master's Degree Required to be enrolled in one of the following programs for a minimum of 2 years: Graduate School of International Resource Sciences Program Graduate School of Medicine Program, Graduate School of Engineering Science Program, Graduate School of Advanced Healthcare Engineering Program. | See Graduate Schools' Websites |
| | | Doctoral Degree Health Sciences: 3 years minimum enrollment. Medicine: 4 years minimum enrollment. International Resource Sciences, Engineering Science: 3 years minimum enrollment. | |
| Exchange Students Short-term Exchange Students (Undergraduate, Graduate) Short-term Research Students (Graduate) | Non-degree Seeking | Only available for students enrolled in our partner universities with international student exchange agreements. Required to attend programs for 1 semester or 2 semesters. Undergraduate Credits and transcript of results issued. * Course requirements for completion: 8 classes or more per week (1 class = 90 minutes) and credits Graduate Certificate of course completion issued. | About 5 months before the start of the program Applicants for April admission: around November Applicants for October admission: around May *Refer to the website for international exchange for details. |
| Non-degree Study Students | Non-degree Seeking | Required to attend regular courses and obtain required grades. * Minimum enrollment of 10hours per week is required for obtaining a student visa. (However, excluding Faculty of Education and Human Studies) | Inquire directly to each Faculty and Graduate School |
| Research Students | Preparing for Graduate School | Required to be engaged in research of specific themes under the supervision of an approved advisor. | |

2. Japanese Government Sponsored International Students

*See the Ministry of Education, Culture, Sports, Science and Technology website for more information.

| Category | Purpose | Notes | Application |
|---|-----------------------------------|---|--|
| Undergraduate Students | Degree Seeking (Bachelor) | Same as "1. Self-funded Undergraduate Students" (above). | Embassy recommendation (apply through overseas Japanese diplomatic office) or University recommendation (consult with your university or graduating university) necessary. |
| Graduate Students (Research Students) | Degree Seeking (Master/Doctorate) | Same as "1. Self-funded Graduate Students" (above). | |
| | Non-degree seeking | Same as "1. Self-funded Research Students" (above). | |
| Japanese Studies Students, "Nikken-sei" | Non-degree Seeking | Complete a 1-year program to improve Japanese language skills and understanding of Japan and its culture. | Embassy recommendation necessary. (apply through overseas Japanese embassies or consulates) |
| Teacher Training Students, "Kyoken-sei" | Non-degree Seeking | Only applicable for in-service teachers or teachers currently undergoing teacher training in their home country. Taking a Japanese language course is compulsory and students must be able to research under supervision in Japanese. | |

*Sufficient Japanese language proficiency is necessary to study at Akita University as most lectures and programs are provided in Japanese.

Financial Support

(1) Deferral of university fees (for privately financed international students)

This is a system that allows students who meet specific eligibility criteria to defer payment of the entrance fee. Applications must be submitted by the students themselves before enrollment.

For details, see "University Fees/Living Expenses/Scholarships" (https://www.akita-u.ac.jp/honbu/life/li_lifesupport.html) or "Akita University Entrance Examination Guidelines for Privately Financed International Students" (to be announced in mid-September) on the Akita University website.

(2) Scholarship *Scholarships are awarded competitively to students after a review process.

a) International Student Scholarship Program

Program for self-funded international students (excluding exchange students) provided through Japan Student Services Organization (JASSO)

b) Privately Financed Scholarships

Various scholarship programs for self-funded international students (excluding exchange students)

Employment Support for International Students

At Akita University, many international students have found employment at Japanese companies. The Employment Promotion Section of the Student Support Center supports international students who wish to find employment in Japan, so please feel free to contact us if you have any concerns.

<Example of employment support>

- Holding employment guidance for international student
- Receiving employment consultations (resume correction and interview practice are also available)
- Information about employment events for international students held on and off campus, such as joint company information sessions

<Student voice>

When I first started looking for a job, I was hesitant about interviewing because I was worried about writing Japanese. However, the staff in charge of employment promotion corrected my entry sheet and helped me practice interviews. Also, he enthusiastically answered my questions. It gave me a lot of confidence and helped me find the right job.

Student Exchange Programs

Only available for international students enrolled in partner universities with an Agreement on Student Exchange.

1 AUAJ (Akita University Academic Japanese Program)

In principle, this is a program for students who have majored in Japanese Language or Japanese Language Education, and have a Japanese language proficiency greater than or equivalent to the Japanese-Language Proficiency Test (JLPT) level N2. The program aims to provide students with advanced Japanese language skills, expertise, and motivation for various academic activities.

Program Length: 2 semesters (Apr. to Feb. or Oct. to Aug.)

2 AUSF (Akita University Program for Creating a Sustainable Future)

In addition to taking Japanese language and specialized subjects, students participate in local events and exchange activities with community residents. The program aims to plan and implement projects that contribute to regional revitalization, in cooperation with Japanese students and local residents.

Program Length: 1 semester or 2 semesters (starts in Apr. or Oct.)

3 AUGP (Akita University General Program)

This program is intended for students who wish to study abroad in a format different from AUAJ or AUSF. Students can choose to study for 1 or 2 semesters and customize the subjects they take.

Program Length: 1 semester or 2 semesters (starts in Apr. or Oct.)

Facilities



Cafeteria
Providing affordable and good quality meals.



Library
Ample study space.



Convenience Store
Light meals such as bentos and drinks are available here.



Multicultural Lounge
International students are free to use this space. It's open on weekdays from 8:30 a.m. until 5:00 p.m.



Book Store
You can purchase textbooks, other books or stationery items here.



International Affairs Division
General advice and guidance are provided for international students. If you ever need some assistance, please come in for a consultation any time.

Health Center
Staffed with doctors, nurses and counselors.

Campus Life



Orientation for International Students

The orientation provides information on administrative procedures at the city hall, and important tips for daily life in Japan. In addition, a campus tour is provided to introduce you to various facilities.



August : Kanto Festival



Support system during study abroad

Supervisor in charge

All international students will be assigned a supervisor. We provide guidance and advice regarding studies, further education, and daily life.

Tutor system

You will be supported by students called tutors who will help you study at university and live your daily life without any inconvenience.

(Support example)

- Guidance on your Japanese language
- Support for class preparation and review
- Research guidance advice
- Accompaniment to city hall etc. for various procedures
- Shopping for daily necessities

3
MARCH

Graduation ceremony

2
FEBRUARY

1
JANUARY

12
DECEMBER

11
NOVEMBER

10
OCTOBER

Orientation for International Students

Second semester classes (October to February)

9
SEPTEMBER

Graduation ceremony

8
AUGUST

There are so many fun events!

7
JULY

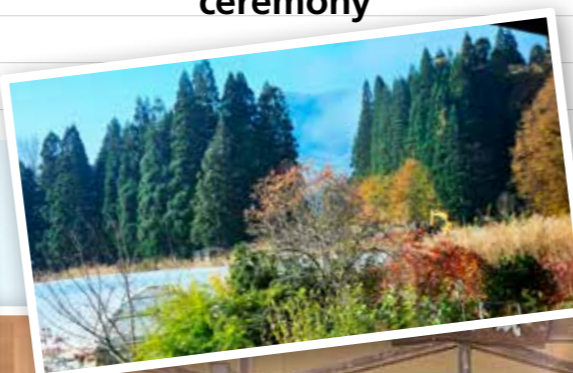
6
JUNE

First semester classes (April to August)

5
MAY

Orientation for International Students Entrance ceremony

4
APRIL



Farmstay tour

In this event, participants experience farming activities and homestay at the local farmer's houses.



October : Farmstay tour

Skiing tour

Skiing tour for international and Japanese students. Instructors will help participants who do not have experience.



February : Skiing Tour

(1) Tuition (AY2025 enrolled students)

| Category | Tuition Fee | Admission Fee | Examination Fee |
|--|---|---------------|-----------------|
| Undergraduate Students | ¥535,800 per year * | ¥282,000 | ¥17,000 |
| Graduate Students | ¥535,800 per year * | ¥282,000 | ¥30,000 |
| Short-term Exchange Students Short-term Research Students | Fees are waived based upon the "Agreement on Student Exchange" between Akita University and the partner universities. | | |
| Non-degree Study Students | ¥14,800 per credit | ¥28,200 | ¥9,800 |
| Research Students | ¥29,700 per month | ¥84,600 | ¥9,800 |

*Annual tuition fee to be paid in two payments (one for each semester).

*Government Sponsored International Students are waived from tuition/admission/examination fees.

Accommodation

Movies of Look around facilities



English Sub

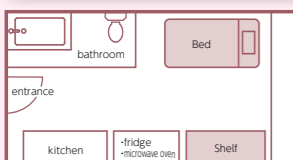


Chinese Sub

1. Dormitory House for International Students

1 International House "A" and "B"

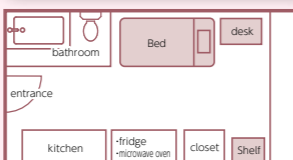
5-minute walk to the University



| | |
|-----------------------------|---|
| Boarding fee | (House A) Single occupancy rooms: ¥5,900/month |
| | (House B) Single occupancy rooms: ¥15,000/month <small>*water, electricity and other, living expenses not included</small> |
| Maximum period of residence | 1 year |

2 International Student House

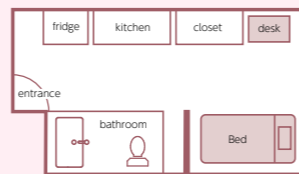
15-minute walk to the University



| | |
|-----------------------------|---|
| Boarding fee | Single occupancy rooms: ¥5,900/month <small>*water, electricity and other, living expenses not included</small> |
| | Maximum period of residence |
| Maximum period of residence | 1 year |

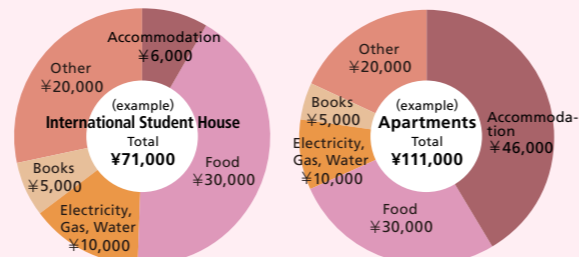
3 Nishiyachi Men's Dormitory

15-minute walk to the University



Dormitory house for both Japanese and international students. It is available until graduation. Boarding fee is ¥20,000/month.

Rough indication of monthly living expenses



Convenience store Supermarket Postal Office

2. Private Apartments

Apartments are usually found through Akita University Co-op or local real estate agents. Rent varies depending on the area or age of the apartment but is generally approximately ¥30,000/month for a 6-jo studio apartment with a kitchen and bathroom. (1-jo = 180cm×90cm)

*2 or 3 months' rent as a deposit and / or "key money" may be required up front for signing a rental contract.

Students' Voice

I am satisfied by daily life in the International House, because there are all facilities for a comfortable student's life. It is clean, new and the location is very convenient. Moreover, I can use a big lounge for teatime with my friends.

International Student House Rent is inexpensive and the location is very good. There are lots of supermarkets around the dormitory and it is very convenient.

Message from Students



TUVSHINBAYAR KHUSLEN (Mongolia)

Faculty of Engineering Science
Department of Material Science
Applied Chemistry Course

Enrolling at Akita University has brought me closer to my dreams. It's been a journey filled with growth, both academically and personally. My life has been filled with joys and learning experiences, as well as meeting new friends at Akita University.

Among the many programs and events organized by Akita University, I had the opportunity to see a Japanese geisha dance and experience life in a local farmhouse. From there, I learned about Japanese life and gained a deeper understanding of Japanese culture. Akita University is

a place that offers such programs and provides opportunities for cross-cultural exchange.

My seniors and friends are kind and support me even when I have problems. In addition, the library and specialized bookstores offer a wide variety of books, allowing me to find and study books that match my interests and make my time here very fulfilling. And the water in Akita is clean, and the rice and food are delicious. You can enjoy "Akita food" while you are in Akita. There are many opportunities to experience the natural beauty of Akita, such as visiting Lake Tazawa, the deepest lake in Japan, in the summer and "Yunomata Falls" in the fall.

While studying at Akita University, I have experienced a lot and developed myself. I hope that you will also enjoy yourself while learning a lot at Akita University in the future.



VICHITBANCHONGDEE ANUPAT (Thailand)

Graduate School of International Resource Sciences
Earth Resource Science

One of my dreams is to study abroad to broaden my perspectives and opportunities, and Japan has been my ideal destination since I was a child. After careful consideration, I decided to study and start a new life at Akita University because of the research opportunities and cultural diversity.

Akita University is one of the perfect places for those who desire to immerse themselves in Japanese culture while wishing to exchange with international students from across the world at the same time. Various styles of exchange activities enable all students, regardless of race and personality, to meet and enjoy these activities together, both

on-campus and outside the university, at their preferences. All the staff are generous, so I feel comfortable asking them for any support.

Apart from campus life, Akita City is neither too crowded nor quiet, so you can live calmly while being able to reach basic facilities and leisure. Moreover, Akita's enchanting nature and attractions are the key things that attract me to experience and relax outside the classroom in all four seasons.

One important thing for having a peaceful life here is adapting to different cultures. Not only the faculty and laboratory you are in but also the society outside the campus. For foreigners in Japan, learning the Japanese language, culture, and unique system is really tough. But once you can cope with this difficulty better, you will grow from the inside and can enjoy the fascinating uniqueness of Akita.