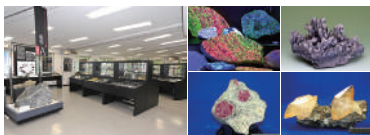
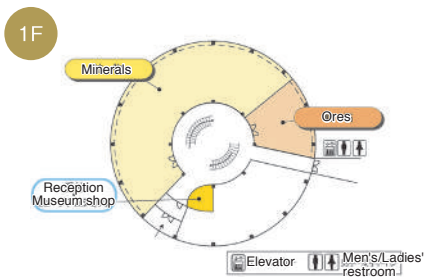


Mineral Industry Museum

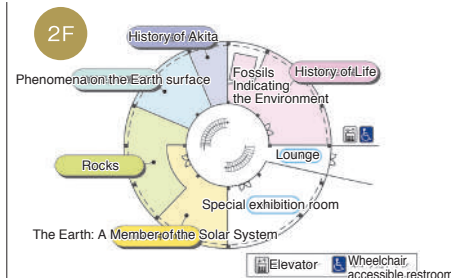


The Mineral Industry Museum collects, preserves, and exhibits materials and specimens related to the Earth's natural resources. Our extensive collection has been accumulated during over 100 years of research and education activities at Akita University. The museum traces its origins to the Exhibition Room of the Akita Mining School, established in 1910. The current building was constructed in 1961 and continues to serve as a center for education

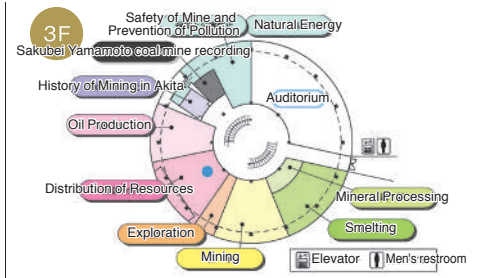
and discovery. In the exhibition building, visitors can observe specimens of minerals, ores, rocks, and fossils while learning about the history of the Earth. The museum also features extensive mining-related exhibits and explanations. Special exhibitions and public lectures are held regularly, introducing topics of interest from a broad range of academic fields.



The 1st floor features one of the largest mineral and ore exhibitions in Japan. More than 2,200 specimens, representing around 550 different varieties, are on display. The specimens exhibited here are collected by staff, students, and alumni since the establishment of Akita Mining School, as well as specimens donated from the mining companies.



The 2nd floor focuses on natural history, featuring specimens of meteorites, rocks, strata, and fossils. You will see five exhibition areas as you enter: "The Earth: A Member of the Solar System", "Rocks", "Phenomena on the Earth's Surface", "The History of Akita" and "The History of Life on Earth". With the help of the many specimens, information panels digital content, visitors can learn about what the Earth is made of, what phenomena have occurred, when life began and how it has evolved.



The 3rd floor is dedicated to the mining industry, with exhibits on the distribution of natural resources, the development of mineral and energy resources, and the history of mining. Because resource development covers such a wide range of technologies, we classify the processing of resources into stages from the exploration for minerals through to the production of metals - "Exploration", "Mining and Extracting Oil", "Beneficiation" and "Smelting". Each stage is explained in a separate exhibition area. We have also set up displays on "Distributing Mineral Resources", "Mine Security Technology", "Natural Energy" "The Mining History of Akita." You can learn all about mining technology and how it has evolved.

<Visitor information>

- Opening hours: 9:00AM -4:00PM
- Closed: New Year's Holiday (Dec 26 - Jan 5), Sundays and public holidays from December to February.
- Admission: Adult 100 yen. Admission is free for high school students and below.
- Free museum guide: Complimentary museum tours are available, hosted by science volunteers. (Reservation required one week in advance)



You can see inside the museum using Google Street View, with 360-degree panoramic photos showing the interior of the building from 1st floor to 3rd floor. It is accessible from your PC screen or smartphone. Search for "Mineral Industry Museum" in Google Maps or use this 2D barcode.

