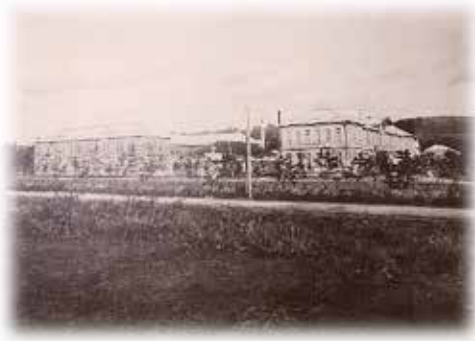
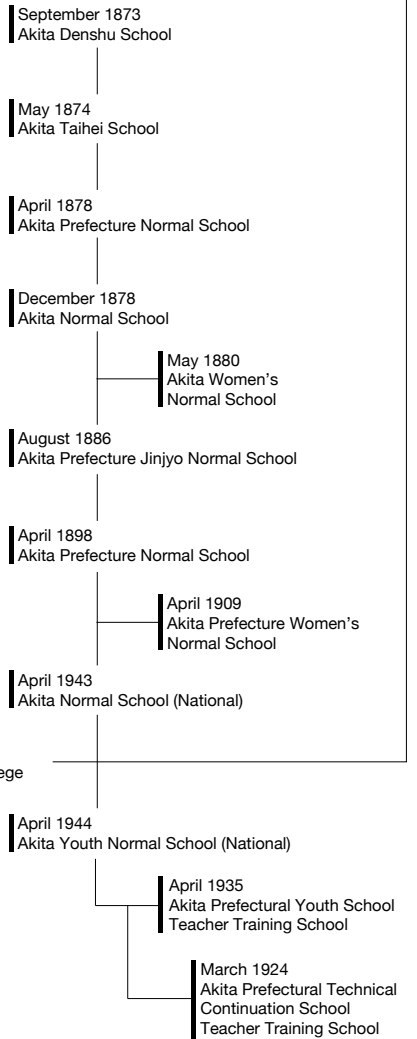


# Historical Sketch

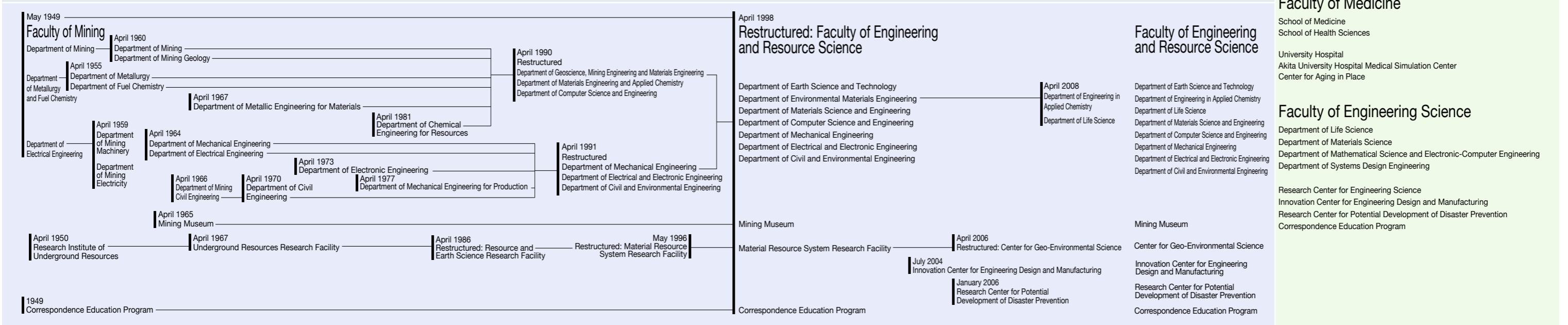
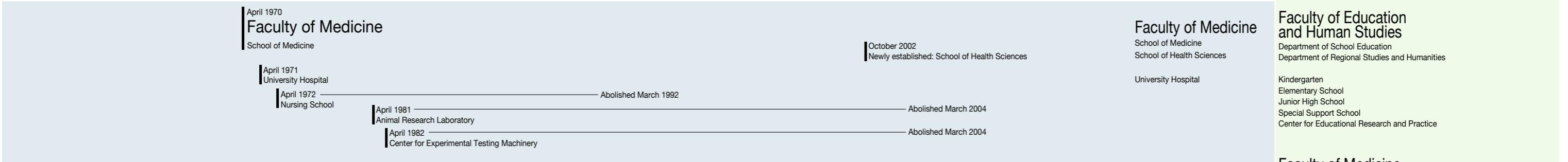
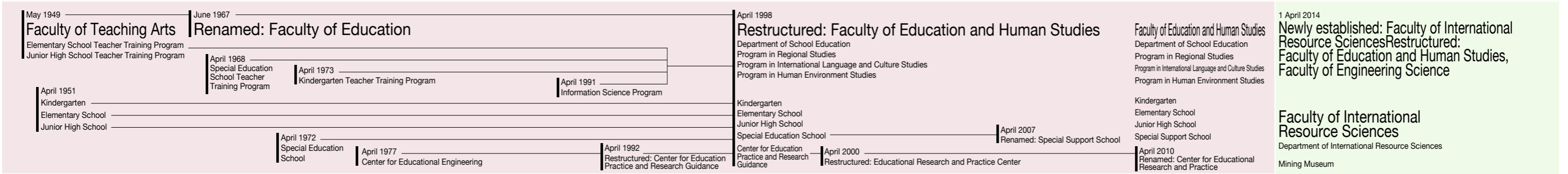
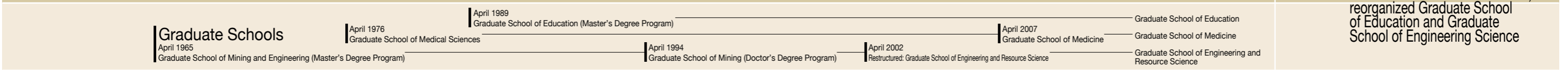


● **100th Anniversary Hall (Constructed October 2012)**

Built to commemorate the 100th anniversary of the founding of the Faculty of Engineering Resources  
 Its exterior inherits the Akita Mining College building, the predecessor to Akita University



May 1949 Akita University established 1999 50<sup>th</sup> anniversary April 2004 National University Corporation 2009 60<sup>th</sup> anniversary April 1st 2016 Newly-founded Graduate School of International Resource Sciences; reorganized Graduate School of Education and Graduate School of Engineering Science



**College of Allied Medical Science**  
(April 1989 – March 2007)

- Department of Physical Therapy, Department of Occupational Therapy (separated and expanded April 1990) [Department of Nursing (October 1989)]

**Non-degree Post-graduate Courses**

- Advanced Course of Mining (April 1954 – March 1965)
- Advanced Course of Education (April 1965 – March 1989)
- Special Advanced Course of Special Education (April 1980 – March 2008)

**University Common Use Facilities for Education and Research**

- Cooperative Research Center (November 2007) [Intellectual Property Headquarters (April 2004) + Regional Cooperative Research Center (January 1989)]
- General Information Processing Center (April 2015) [Information Processing Center (January 1989)]
- Biosciences Education and Research Support Center (April 2016) [Bioscience Education and Research Center (April 2004)]
- Radioisotope Research Center (June 1974) ● Environmental Research Center (April 2004)
- International Center for Research and Education on Mineral and Energy Resources (October 2009)
- Center for Regional Development (April 2016) [Center for Regional Development (April 2011); Venture Business Laboratory (May 2001); Venture Incubation Center (October 2012)]
- Research Center for Biosignal (April 2012)

**Centers for Education and Research**

- Institutional Research and Evaluation Center (April 2017) [Center for Evaluation (April 2004)]
- Center for Promotion of Educational Research and Affairs (April 2004)
- Secondary Education Collaboration Center (April 2017)
- Center for Teaching License Extension (April 2009)
- Student Support Center (April 2004)
- International Exchange Center (February 2008) [Organization for the Promotion of International Exchange (April 2004)]
- \* Organization for the Promotion of Social Contribution (April 2004 – March 2009)

- University Library (May 1949)
- University Health Center (April 1974)
- Center of Community (Promotion division of Community) (April 2016)