

# Administrator Data

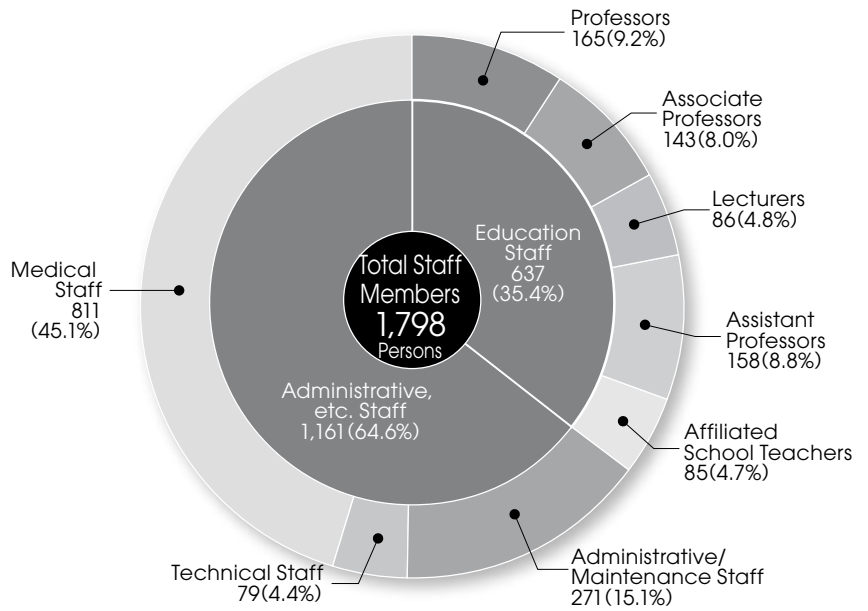
As of 1 May 2018

Category	University President	Director	Temporary	Total
University President	1			1
Director		5 (1)		5 (1)
Temporary			2 (1)	2 (1)
<b>Total</b>	<b>1</b>	<b>5 (1)</b>	<b>2 (1)</b>	<b>8 (2)</b>

\*Numbers in ( ) represent part-time administrators as a portion of the total number.

# Instructor Data

As of 1 May 2018



\*Teaching staff includes specially appointed teachers, excludes charitable lecturers

## All Staff by Position and Gender

As of 1 May 2018

Sex	Professors		Associate Professors		Lecturers		Assistant Professors		Affiliated School Teachers		Administrative/Maintenance Staff		Technical Staff		Medical Staff	
	#	%	#	%	#	%	#	%	#	%	#	%	#	%	#	%
Male	150	90.9	124	86.7	71	82.6	108	68.4	41	48.2	168	62.0	60	75.9	154	48.2
Female	15	9.1	19	13.3	15	17.4	50	31.6	44	51.8	103	38.0	19	24.1	657	51.8
<b>Total</b>	165		143		86		158		85		271		79		811	