

Administrator Data

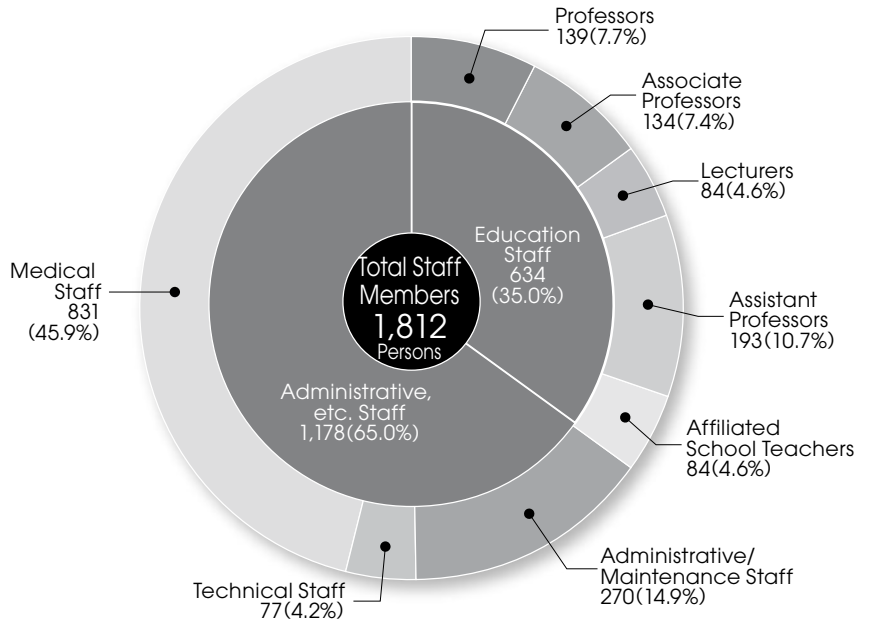
As of 2022 May 1

Category	University President	Director	Temporary	Total
University President	1			1
Director		6 (1)		6 (1)
Auditors			2 (1)	2 (1)
Total	1	6 (1)	2 (1)	9 (2)

*Numbers in () represent part-time administrators as a portion of the total number.

Instructor Data

As of 2023 May 1



*Teaching staff includes specially appointed teachers, excludes charitable lecturers

All Staff by Position and Gender

As of 2023 May 1

Sex	Professors		Associate Professors		Lecturers		Assistant Professors		Affiliated School Teachers		Administrative/Maintenance Staff		Technical Staff		Medical Staff	
	#	%	#	%	#	%	#	%	#	%	#	%	#	%	#	%
Male	124	89.2	115	85.8	65	77.4	123	63.7	39	46.4	149	55.2	55	71.4	182	21.9
Female	15	10.8	19	14.2	19	22.6	70	36.3	45	53.6	121	44.8	22	28.6	649	78.1
Total	139		134		84		193		84		270		77		831	