

Akita University

2014 Edition

Outline

GENERAL INFORMATION BULLETIN 2014



AKITA UNIVERSITY 2014

GENERAL INFORMATION BULLETIN

C O N T E N T S

- 01 Message from the President
- 02 The Mission, The Goal, and Educational Objective
- 04 Mid-term Objective and Plan

Education, Research, Contributions to Society,
International Exchange

- 07 Distinguished Education and Research
- 08 Contributions to Society
- 10 International Exchange

Faculty, Graduate School

- 13 Faculty of International Resource Sciences
- 14 Faculty of Education and Human Studies
- 15 Faculty of Medicine
- 16 Faculty of Engineering Science
- 17 Graduate School of Education
Graduate School of Medicine
Graduate School of Engineering and Resource Science

University Facilities

- 19 University Library
- 20 University Hospital
- 22 Mining Museum
- 23 Affiliated School and Facilities for Education and Research
- 24 University Common Use Facilities for Education and Research
- 25 Center for Education and Research/Technological Organization
- 26 Welfare Facilities/Sports Facilities
- 27 Tokyo Satellite Office/Yokote Branch School,
Kita Akita Branch School/Oga Namahage Branch School
- 28 Information Center

INFORMATION

- 30 Historical Sketch
- 33 Academic Organization
- 34 Student Quota, Current Student Data
- 35 New Student Application and Entrant Data
- 36 Graduate Data/Degree Conferral Data
- 37 International Student Data/International Researcher Data
- 38 Overseas Partner Universities
- 39 Administrator Data/ Instructor Data
- 40 Budget for FY2014/Accepted External Funding Status
- 41 Telephone Numbers and Addresses
- 42 Tegata Campus Map
- 43 Hondo Campus Map/Hodono Campus Map
- 44 Access



Message from the President April.2014

This spring at Akita University the Faculty of International Resource Sciences was newly established, and with the Faculty of Medicine, reorganized Faculty of Engineering Science, and Faculty of Education and Human Studies, we have set out on a new beginning with a 4-faculty organization.

With its roots in the former Mining College the Faculty of Engineering and Resource Science established spirit of inquiry, and the students of the Faculties of Engineering Science and International Resource Science will follow in the footsteps of those before them, continuing to nurture that knowledge and ambition. Akita is suffering from Japanese's declining and aging population, however the children raised here are recognized as being "No.1 in Academics" in Japan, and are truly important resource for Akita. These children goes hand-in-hand with the existence of the Faculty of Education and Human Studies, and also its dreams of the future.

With the recent reorganization and newly developed Regional Cultures Department, we hope to build up our track record for cultivating talented graduates who can contribute to the region and the world.

Moving on to the Faculty of Medicine, it was founded in 1970 as the first Faculty of Medicine in post-war Japan, due to the enthusiastic support of the people of Akita who rallied together in a campaign to the government protesting the lagging medical facilities in the prefecture. In other words, the origin of the Faculty of Medicine was the "hope" that protects the lives of the people of this area. In all of our Faculties, each possessing such unique features, let us carry on our studies, and strive to become a far-sighted leader for the world and the region.

The world is now in a great race, where people, goods and information circulate instantaneously. In this movement, there are no country borders creating "barriers." Young people definitely have

the potential to help Japan evolve into a country that is reliable, respected, and can exhibit its presence in the international community for years to come. You are given the time to learn as a "student" and the place to learn at "Akita University" to be an essential one. As building your character, polish your "words" that will allow you to accommodate globalization. Akita University will Provide the utmost support to its students, who abound in youth and talent.

On campus there are over 200 students from 24 different countries and regions studying diligently, The four seasons abundant with nature, and the warm, welcoming people of Akita will surely aid in creating a rewarding international study experience. As humans we share common emotions and intellect, and various ways of thinking and feeling as influenced by our own cultures. These sensibilities are indispensable as world citizens, and we invite you to refine them in Akita alongside the Japanese students.

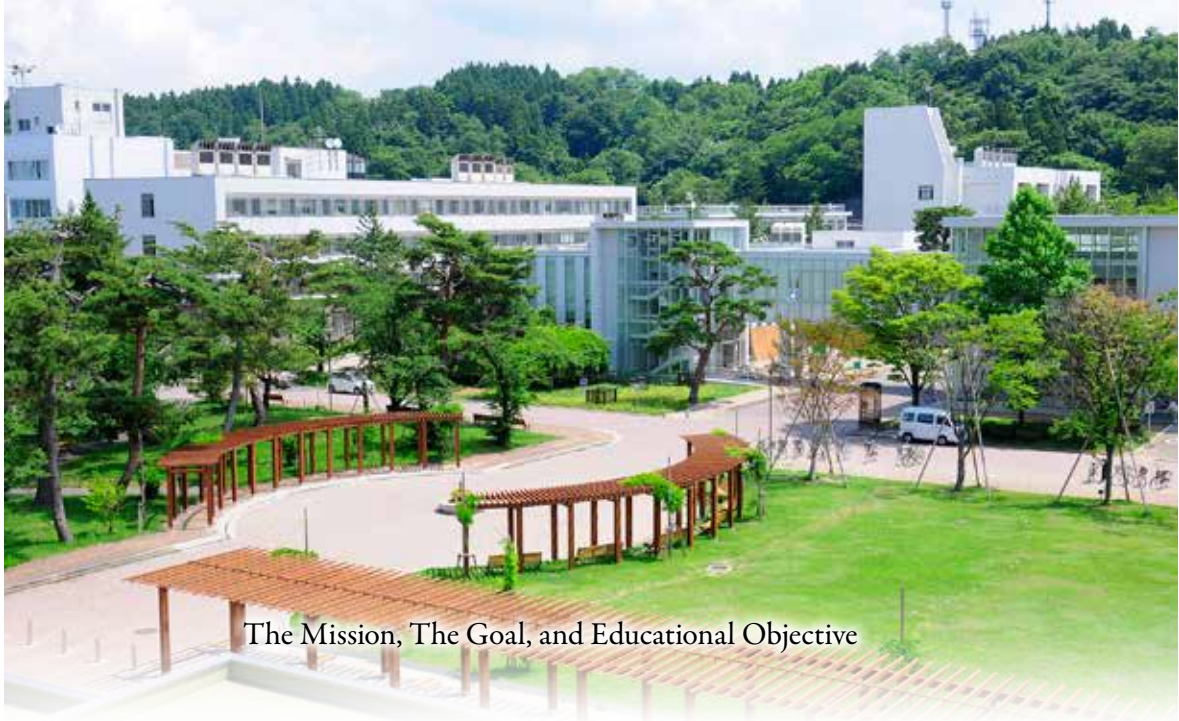
Akita University is the core university of the natural resource-rich northern Tohoku region, and has set forth to develop and grow with the region, as is stated in the university's mission. We accept earnest Japanese and foreign students, provide a place for educational research taking into account the circumstances of the region, while striving to cultivate excellent human resources and presenting innovative global achievements. We have further enhanced our ties to local areas through our Yokote, Kita Akita, and Oga Namahage campuses. Our cooperation with other universities is also being strengthened.

We are attempting innovative challenges in regional and global settings.

Akita University's mission statement works towards fulfilling the dreams and promise of all those who gather here.

Akita National University President

Dr. Kenichi Sawada, M.D.



The Mission, The Goal, and Educational Objective

The Mission The Goals Educational Objectives

Akita University has established the following set of basic principles, and has formed five essential goals in order to realize them.

Further, we specialize the educational goal of cultivating the future leaders.

Basic Principles

1. Promote world-class education and research.
2. Conduct a great commitment to community service and the resolution of global issues.
3. Nurture students to be able to assume an important role globally, as well as locally.

Essential Goals

1. To provide a student-centered university education, to develop human resources with a broad background education, in-depth specialization, deep humanity and a high level of ethics.
2. To promote innovative research projects, ranging from basic to advanced, particularly those that are intended to promote a harmonious co-existence with the environment and nature.
3. To develop and grow with the surrounding area, and aim to co-exist with the region.
4. To establish internationally-based educational and research centers to deal with various global issues
5. To operate with a flexible and organic management style under the leadership of the University President.

Educational Objectives

Undergraduate Course

1. To cultivate a workforce of the future who can adapt to changes in society with flexibility, possess a broad background education, in-depth specialization, deep humanity, a high level of ethics, and that can contribute to the development of society.
2. To cultivate a future workforce capable of contributing to the cultural and economic development of the region.
3. To cultivate a future workforce with the communication skills and understanding of foreign cultures possessed by world citizens.

Graduate Courses

1. To cultivate a future workforce, capable of being world citizens who possess in-depth specialization, innovativeness and a strong sense of ethics.
2. To cultivate a future workforce able to perform as leaders with highly specialized advanced research capabilities.



Mid-term Objective and Plan

Akita University Mid-term Objective (Preamble) The University's Basic Objective

As a core university of the natural resource-rich northern Tohoku region, Akita University has set forth as its mission, to develop and grow with the region. We provide a place for educational research that takes into account the circumstances of the region, while striving to cultivate excellent human resources and presenting innovative achievements globally, and making efforts to accept earnest youth from both within Japan and abroad. Towards that end, we are pursuing a flexible organization in cooperation with other institutions of higher learning.

Regarding the development of human resources, each department that makes up the university nurtures its students to become specialized professionals taking on roles in the local community, highly-specialized professionals active on the international stage and researchers in the world of academia, with their specialized education, and through the integration of various studies and various organizations.

For this reason, a quality liberal arts education is essential to become an independent and balanced member of society. Based on this basic knowledge, Akita University aims to be a student-centered university with a dynamic campus-wide fellowship of knowledge amongst its students and staff.

Based on the aforementioned principles and guidelines, the basic objectives of the university's activities are set forth below.

1. In terms of education, to strive to maintain a world-class standard of education both in content and quality, and nurture a future leaders to undertake the issues facing their generation.
2. In terms of research, to promote distinctive research activities with a broad perspective, from regional circumstances to the various issues facing humankind, and continuously presenting the



results locally and globally.

3. In terms of contributions to society, to promote university classes open to the community, improve medical care and welfare, participate in the development of education and industry, and to serve as a compass of the region.
4. In terms of globalization, to foster the international study and assignment abroad of university students and staff, to increase the admissions of international students and researchers from Asian and other foreign countries, and to strive to maintain an appropriate environment to accept them.
5. In terms of university management, enhancing the leadership of the university President, and improving the foundation of existence of the university by effectively investing various resources through swift decision-making.

Mid-term Objective

- I. To enhance the quality of the university's education, research, etc.
- II. To develop and streamline business management
- III. To improve finances
- IV. To provide information relating to self-inspection evaluation, and relevant conditions
- V. A mid-term plan with 65 items has been established outlining the measures necessary to achieving the objectives regarding the business management of other miscellany

The university's entire Mid-term Objectives and Mid-term Plan can be viewed online (in Japanese) at the the following homepage:

http://www.akita-u.ac.jp/honbu/info/in_target.html

Research Education and Innovation

Distinguished Education and Research

- Leading Program for Doctorate Degree
New Frontier Leader Program for Rare-metal and Resources
- Improving Education to Meet the Needs of Industry/Enhanced System Maintenance Project
Hokkaido – Tohoku Block – Developing human resources who will pioneer the future of the region and society through a cooperation of industry, government and academia –
- Project to Support the Development of Students of Math and Science
A program to train scientists rich in innovative ideas
Helix Project - Developing the potential of those who stand out
- Oncology Professional Training Plan
A plan to promote training the next generation of specialists in treating cancer
- Akita University “The Base of Region (and Intelligence)” Maintenance Project
Building a community in the face of an independent aging society, respecting the value of each individual member
- Strategic International Collaborative Research Program
Science and Technology Research Partnership for Sustainable Development (SATREPS)

Contributions to Society

International Exchange



Distinguished Education and Research

Leading Program for Doctorate Degree New Frontier Leading Program for Rare-metal and Resources

(Period of implementation: Adopted FY2012 – FY2019)

The “Resource New Frontier Special Education Course” was established in the Graduate School of Engineering and Resource Science. In addition to studying conventional resource economics, further environmental conservation and resource literacy, biological effects of rare earth, etc., knowledge and skills required for cultural understanding and international relations are fostered with the aim to nurture human resources, “resource new frontier leaders”, with the ability to survey and tackle the issues regarding international resource development in the 21st century.

Improving Education to Meet the Needs of Industry/Enhanced System Maintenance Project. Hokkaido – Tohoku Block

– Developing human resources who will pioneer the future of the region and society through a cooperation of industry, government and academia –

(Period of Implementation: Adopted FY 2012 – FY 2014)

Since FY2010, we have implemented the university education reform that focuses on cultivating the future workforce as its foundation, and aims for further systemization and improvement of career education, offering highly cooperative student support for “career development”, “fostering basic skills as a member of society” (=skills necessary in society), and “job hunting”. We provide various types of support in order to encourage career development such as organizing career development courses, conducting fieldwork with the cooperation of the business community, etc.

Project to Support the Development of Students of Math and Science. A program to train scientists rich in innovative ideas.

Helix Project - Developing the potential of those who stand out

(Period of Implementation: Adopted FY2011 – FY2014)

Students with exceptional math and science skills and motivation are selected, and provided with a system of opportunities to receive an instruction in scientific English from native teachers, a special curriculum, attend seminars, be relegated to a research lab early, etc. from the their first year. They are given the chance to visit universities abroad, as we aim to nurture researchers rich in innovative ideas who can one day participate in the international arena.

Oncology Professional Training Plan A plan to promote training the next generation of specialists in treating cancer

(Period of Implementation: Adopted FY2012 – FY2016)

This is a team project with 4 universities in Tokyo, including Tokyo Medical and Dental University and Hirosaki University. We are working towards a plan to fight cancer. The aims of the program are to ① Obtain a variety of minimally invasive cancer treatment methods ② Training of comprehensive clinical oncologists ③ The spread and promotion of community healthcare for cancer treatment ④ The promotion of clinical cancer research and the practical application of its results ⑤ Training human resources who can be involved in the development of equipment necessary for cancer treatment ⑥ Training oncology pharmacists who can contribute to the improvement of scientific cancer therapies.

Akita University “Base of Region (and Intelligence)” Maintenance Project (COC project)

– Building a community in the face of an independent aging society, respecting the value of each individual member–

(Period of Implementation: Adopted FY2013 – FY2017)

The Ministry of Education, Culture, Sports, Science and Technology’s new subsidiary project of FY2013. As promoting participation in local business by the municipalities of Yokote, Kita Akita and Katagami and cooperation on projects with local residents, we are creating the “Akita Original Regional Model” giving hope to even the ultra aging society, positioning the university to be loved and deemed necessary by the local area.

Strategic International Collaborative Research Program. Science and Technology Research Partnership for Sustainable Development (SATREPS)

Research on the Integration System of Spatial Environment Analyses and Advanced Metal Recovery to Ensure Sustainable Resource Development

(Period of Implementation: Adopted FY2014 – FY2018)

In Serbia, a copper resource developing area troubled by environmental pollution, far-reaching environmental assessment restoration system research development is conducted with the aim to find balance between development and the environment, which is indispensable to sustainable resource development, through combining advanced remote sensing data and surface data to create three dimensional environment evaluation and analysis and integrating it with metal recovery technology.

Contributions to Society

In FY2004 Akita University became a National University Corporation, and acted upon this chance to make education, research, and contributions to society as a focal point of its university management policy. We have been promoting the “open university project” as the hub of public intellect.

The root of the university’s social contributions is the belief that education is not only for students, but that it is a lifelong process, and that we should make proactive efforts to provide educational resources to society as a whole, as well. This concept has been the basis for the expansion of various activities. Furthermore we offer activities geared towards high school students and their parents, as well as elementary and junior high school students.

Akita University’s Societal Contribution Project

■Open lectures

Every year open lectures are held on a wide variety of topics as an excellent educational resource for any municipal or prefectural citizens who wish to attend as part of the lifelong learning process.



*For the list of open lectures offered during FY2014 please refer to Akita University’s homepage.

■Satellite Project

In municipalities around Akita prefecture, and in the greater Tokyo area, Akita University faculty members present lectures, science lessons geared toward children, etc. This is a project in cooperation with 3 other universities: Akita Prefectural University, Akita International University, and Akita University of Art.



■Children’s Observation Day

Every year during summer vacation “Children’s Observation Day” is held for elementary school students and their parents. The purpose is to raise their interest in the university through touring the university, watching experiments in laboratories, viewing the skies through the astronomical telescope, etc.



■Elementary and Junior High School Student Tours

The university is constantly conducting tours as part of the “integrated study” and workplace experience for elementary and junior high school students, and for PTA training seminars, etc. The faculty introduces Akita University as they guide groups through the school and answer their questions. Visiting a research lab and interview faculty and students is also possible if desired.



The university is constantly conducting tours as part of the “integrated study” and workplace experience for elementary and junior high school students, and for PTA training seminars, etc. The faculty introduces Akita University as they guide groups through the school and answer their questions. Visiting a research lab and interview faculty and students is also possible if desired.

■Cooperating with Communities

In an effort to provide Akita University’s education and research resources and to encourage community vitalization, we have concluded a partnership agreement with municipalities in Akita Prefecture. In an effort to be a “university rooted in the community”, we promote our social activities; holding public lectures and interactions between our Japanese/international students and the local community, etc.



As of May 1, 2014, we have partnership agreements with 13 municipalities in Akita Prefecture.

■“Medical Science Café Next”

Until FY2011 faculty members of Akita University Graduate School of Medicine explained the results of the latest medical



research in simple terms, and exchanged opinions freely on the topic with participants at the “Akita Medical Science Café”. As a new initiative from FY2012, Faculty of Education and Human Studies, and from FY2013 Graduate School of Engineering and Resource Science have collaborated to create the campus-wide “Medical Science Café, Next”. Beverages are offered at the venue to help the participants feel at ease, and the university’s education and research resources are shared in a relaxed atmosphere.

Local Disaster Prevention

1. Investigation and Research regarding how local disaster prevention should be conducted considering the characteristics of Akita Prefecture

- ① Conduct a basic research regarding earthquakes and disaster prevention within Akita Prefecture.
- ② Investigate the extent of the impact of previous tsunamis that have occurred on Akita prefectural shores, and research ways to lessen tsunami damage.
- ③ Investigate and research earthquakes and tsunamis that may have the potential to inflict enormous damage on Akita Prefecture in the future.



2. Train human resources who can be active in the community regarding disaster prevention



- ① Conduct disaster education at municipalities and neighborhood associations so that in the event of an earthquake local residents can carry out disaster mitigation measures on their own.
- ② Conduct disaster education at daycare facilities, kindergartens, elementary, junior high and high schools throughout the prefecture.

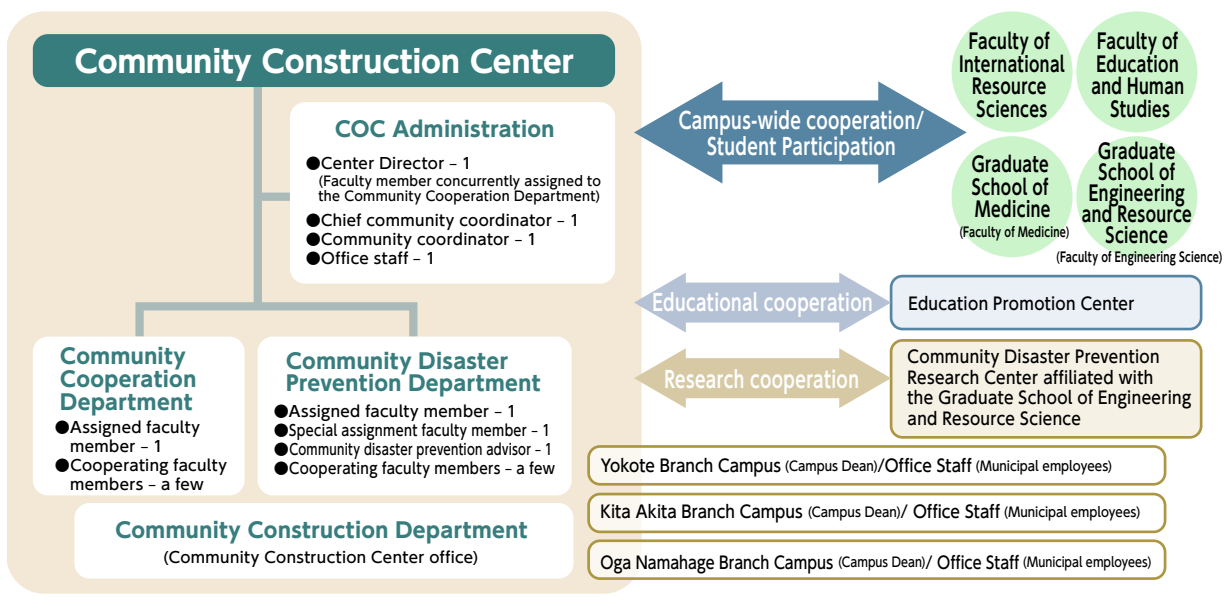
3. Provide instruction and advice to the prefecture and cities, town and villages within it regarding disaster prevention measures

- ① Provide instruction and advice necessary to implement earthquake disaster prevention measures as well as projected earthquake damage in Akita Prefecture.
- ② Provide instructions and advice regarding the disaster prevention and mitigation measures prefectural municipalities generate while taking the region's characteristics into account.

A Bridge to the Community

The Community Construction Center was established on April 1, 2013 with the aim to “contribute to development of communities and the formation of a safe and secure society by cooperating with the community and providing advice regarding the community’s revitalization, educational activities, and resident activities and researching and providing support regarding disaster prevention for the community, from the viewpoint of creating knowledge for the purpose of local regeneration”. By giving

clarity to Akita University’s “Community Cooperation Department” through its “Cooperating with the Community and Contributing to the Community” activities, we are contributing to the sustainable development of the community. Also on September 1, 2013 the “Community Disaster Prevention Department” was established, through which investigation and research is being conducted regarding earthquake damage and disaster prevention measures for the community are being addressed. The Community Construction Center considers problems for the community challenges for the university, and we work together as one with the community towards resolving the problems.



International Exchange

An Academic Network Stretches Across the Globe

Our present network of inter-university agreements consists of 51 universities in 27 countries and regions, and our network of inter-department agreements consists of 15 departments in 8 different countries and regions (as of May 1, 2014). In October 2012, the overseas base “Akita University Mongolia Office” was opened. In April 2013 the second overseas base “Akita University - Chulalongkorn University Joint Research Laboratory” was opened at Chulalongkorn University in Thailand.

We will continue to be proactive in promoting international exchange through academic and student interaction with our partner schools.



Akita University - Chulalongkorn University Joint Research Laboratory (April 25, 2013)

Challenging Resources Taking Akita University’s “Stage” Global

Resource-less Japan; its great challenge is how to obtain them.

Rare-metals, resource nationalism, and urban mining are keywords we find in the media these days making it obvious to everyone that the world is turning upon the axis of resources. As countries go to war over resources, Akita University’s presence is becoming more prominent.

Akita University is the only university in the country where students can study the entire mining process from start to finish; from resource prospecting, to mineral extraction, to mineral processing. Leading experts in the resource field gather here from all over the country and train students, interns and researchers from all over the world, including Japan, to become resource development experts.

“Akita University International Center for Research and Education on Mineral and Energy Resources” has been taking a central role in this challenge. Established in October 2009, it specializes in resource research, with the aim to be the research hub for resource development. The center is based in the Faculty of Engineering and Resource Science, which makes it easier for center staff to make long-term business trips and it serves as a center for the entire campus.

Currently the center is concentrating its efforts on providing technological support to countries that possess resources. The center began when the resource-rich African

nation of Botswana requested that Akita University train its resource engineers.

We are providing the know-how to resource-rich countries but have difficulties in developing them. In addition to Botswana, we began to support Mongolia, Kazakhstan and other countries with undeveloped resources.

Akita University has a proud history that began more than 100 years ago with the former Akita Mining College. Now, it acts as “resource diplomat”, gathering and refining professional knowledge and bridge to the future.

The knowledge cooperation will lead to establishing Japan’s resource security and a system of stable supply. The technology cultivated over many years in Akita is now ready to take on the world.



Akita University is working towards expanding its international exchange so that it may be a university open to the world. To that end we are striving to promote study abroad and international appointments amongst our students and staff, as well as increasing the number of foreign students we accept and maintaining an appropriate environment to host them. The International Exchange Center was established in February 2008, setting in place a framework for furthering strategic international exchange.

Ample Educational and Daily Life Support for Foreign Exchange Students

Along with the increased numbers of foreign students, we are making active efforts to maintain the system of educational support.

In FY2009 we established our own unique scholarship (the Akita University Scholarship for Privately Funded Students) for privately funded foreign exchange students. As a result, we are now able to award scholarships to students from partner schools with excellent grades who wish to study abroad.

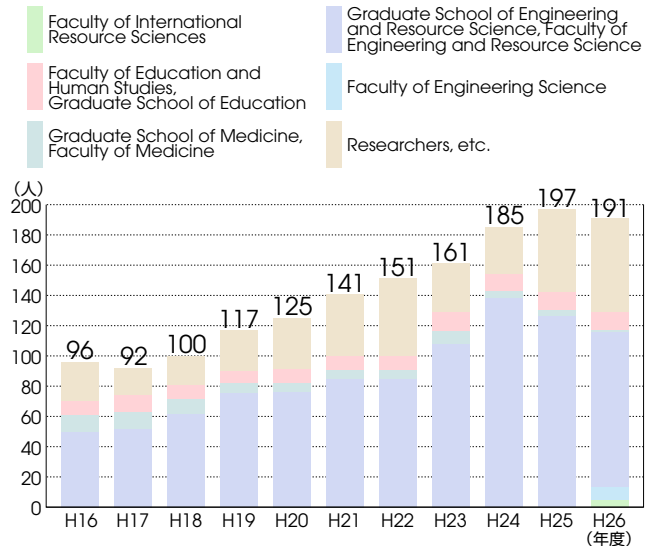
In FY2014, the Japan Student Services Organization's Student Exchange Support Program (for short-term students) adopted the "Akita University Experiential Program (AUEP)" for the 5th straight year, increasing the number of scholarship recipients, which in turn lead to the increase of exchange students from partner schools. The AUEP program aims to raise students' communication ability and gain an understanding of Akita's culture through experiential multi-language classes and specialized classes in English.

In order to deepen students' understanding of Akita culture, various community-rooted events are planned, such as an overnight farmhouse stay, mochi (rice cake) pounding, a visit to Yokote Kamakura (igloo), overnight ski trips, etc. By adopting the "tutoring system" Japanese students help exchange students with their Japanese language study and provide support for their daily lives. In April 2010, the "Multicultural Lounge" was established as a space to independently study a variety of languages, and study abroad orientation and information meetings are regularly held here.



Multicultural Lounge

<Shifts in International Student Numbers>



Nurturing Human Resources with an International Perspective

Nurturing Human Resources with an International Perspective

In order to assign young faculty members to post in foreign universities, and nurture human resources with an international perspective, we have undertaken the "Akita University Researcher Foreign Assignment Project". From 2008, when it was systemized, each year approximately 4 people, totaling 18 researchers have used this system to conduct research at universities abroad.

Also, in an effort to provide financial support to university students studying abroad at partner schools we have established the "Akita University Student Overseas Assignment Support Project". Part of the international airfare is provided (up to 40,000 yen within Asia, and up to 100,000 for other locations), with support provided to 5 students in FY2013.



Study Abroad Orientation (May 22, 2013)

Undergraduate Faculty and Graduate School

[Undergraduate Faculty]

Faculty of International
Resource Sciences

Faculty of Education and
Human Studies

Faculty of Medicine

Faculty of Engineering Science

[Graduate School]

Graduate School of Education

Graduate School of Medicine

Graduate School of Engineering
and Resource Science

Faculty of International Resource Sciences

The Faculty of International Resource Sciences is the only faculty in Japan that approaches to the study of natural resources, comprising science and technology studies from the fields of earth science and geotechnology with a focus on economic minerals and petroleum exploration, development, and production. The Faculty also provides studies in humanities with a focus on the politics and cultures of resource-producing nations. Students will learn from professors who are world-class researchers in their fields of expertise, about natural resources and their importance in our daily life. Graduates will be able to apply their practical and theoretical knowledge at the international level, leveraging the strong ties between the faculty and other universities, companies, and research institutions both in Japan and abroad.

Faculty Organization (1 Department) [Department of International Resource Sciences]

Looking toward resolving the resource issues on a global scale, practical abilities are fostered with an international perspective.

Resource Policy and Management

Students study the cultures and circumstances of resource-producing regions and learn how to communicate with people from diverse cultural backgrounds and value systems. They deepen their knowledge of economics, policy and law relating to resource development.

Earth Resource Science

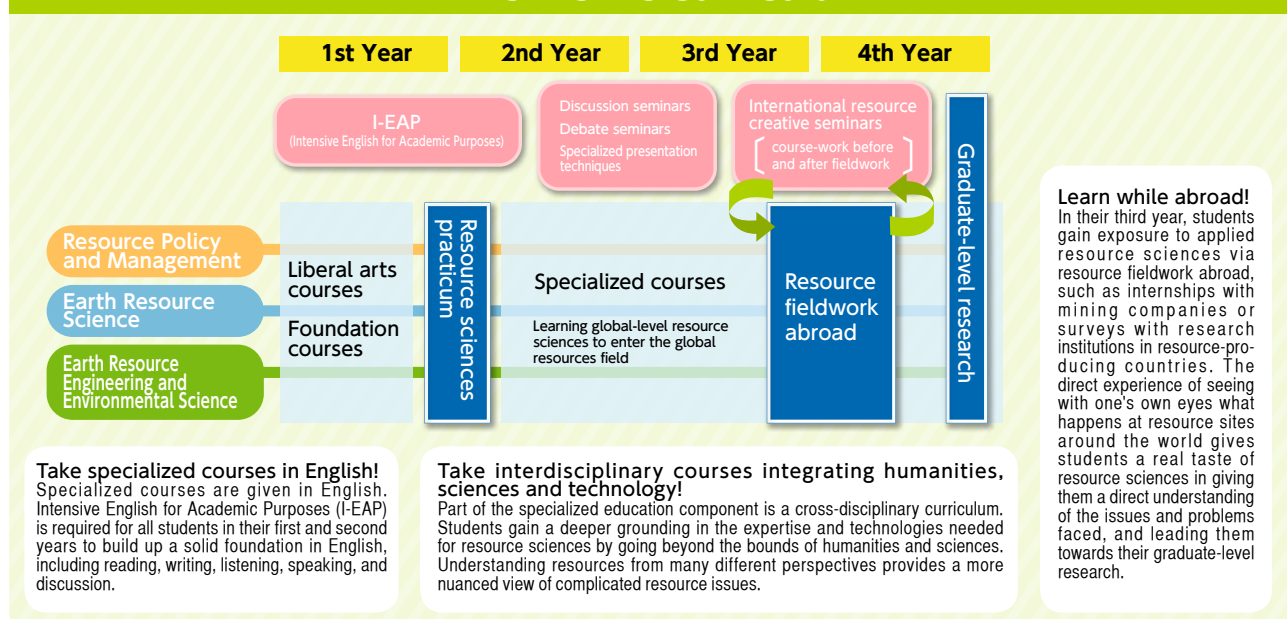
This field of study is focused on dynamics of earth history. Students study and research the formation and distribution systems of underground resources in the world such as economic minerals and petroleum resources throughout the analysis of 4.6 billion years of the Earth History.

Earth Resource Engineering and Environmental Science

Students are given a comprehensive overview of resource development and the global environment, from resource exploration, development, and production methods, through to refining and recycling technologies and environmental conservation.



Distinctive Curricula



Faculty of Education and Human Studies

The Faculty of Education and Human Studies consists of 1 department and 1 course; the “School Curriculum Course” focuses on teacher training, and the “Regional Culture Department” that stands at the core of regional collaboration. The “School Curriculum Course” aims to cultivate teachers with practical field skills while working in close cooperation with schools, and maintain the level and invigoration of education in Akita to the country’s highest standards. In the “Regional Culture Department” students study regional issues from various and international perspectives and are trained with practical skills to work in communities.

■ Faculty Organization (1 course 1 department) [School Education Curriculum]

We nurture teachers who can contribute to the vitalization of regional education.

● Compulsory School Teachers

This program trains teachers with the advanced practical skills needed to support top-class academics nationwide, with an emphasis on the elementary and junior high school levels. Student will gain a deeper understanding of childhood development and growth, both mental and physical, and gain competencies for teaching in both elementary schools and junior high schools.

● English Language Teachers

In addition to giving students practical abilities in English education at the elementary and junior high school levels, the program trains teachers in international communication skills that go beyond just English to help educate Akita’s next generation of globally capable people.



● Science and Mathematics Teachers

Students in this program expand their systematic knowledge of science and mathematics, and learn how to make these subjects interesting for children, as part of this program’s focus on training teachers that can develop experiential understanding in their classrooms.

● Special-Needs Education Teachers

The program trains teachers to be able to support the development and growth of special needs students in an inclusive environment, as part of special-needs education at mainstream elementary and middle schools or at special-needs schools.

● Child Development and Education

The program offers training for teachers covering the span from nursery school through elementary school, providing a thorough overview of human development and education at the nursery school, kindergarten, and elementary levels.

[Regional Culture Department]

Training human resources who can contribute to regional vitalization.

● Regional Studies

The program’s graduates will be able to look into the details of varied regional ways of life and environmental resources and reevaluate them to propose new and different ways of life, industry, and working, with an emphasis on identifying and analyzing regional issues to develop a new future for the region.

● Humanities

In addition to broad studies about the diverse histories, languages, cultures, and artistic traditions of Japan and other countries, program students learn to leverage this knowledge to discover ways of maintaining, creating, and revitalizing the region’s cultural resources, and to continue in their own lifelong learning.



Faculty of Medicine

With the foundation of a humanity supported by a broad educational background, flexible adaptability allowing adjustability to advances in academia, a developed ability to solve problems, and a sufficient understanding of medical and health sciences, we are training human resources, who maintain an international perspective, and who can contribute to people's health and welfare. Upon graduation, aside from working as a medical professional in a clinical setting, the door to continue on to graduate school to become a researcher or instructor, or any number of other advanced specialists in the medical field is opened.

Faculty Organization (2 departments)

[Medical Department]

The faculty from the graduate school trains to be top-flight doctors with advanced knowledge and technical skills.

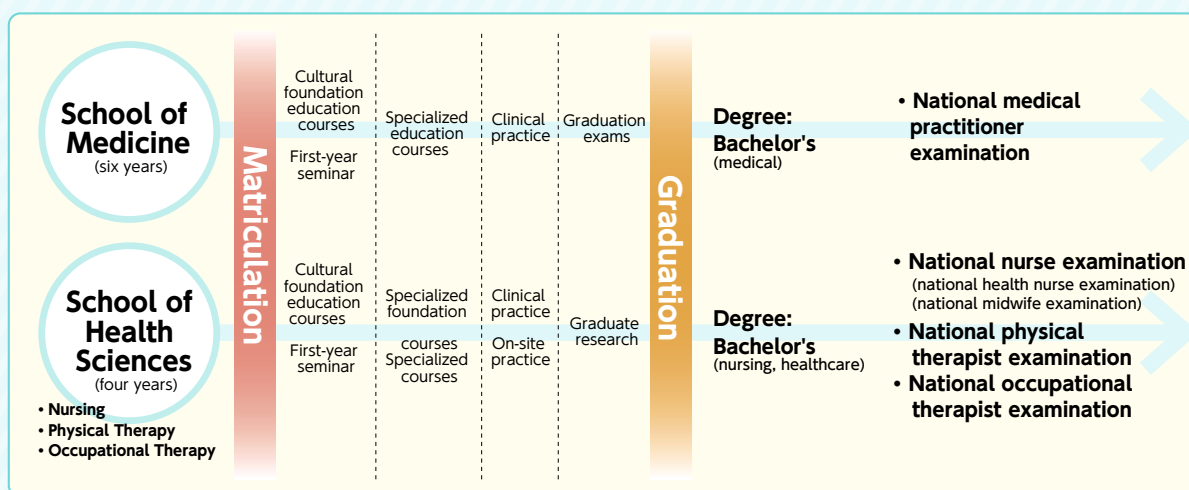
[Health Sciences Department]

We have 3 majors (nursing, physical therapy, and occupational therapy) and 6 courses (nurses, public health nurses, midwives, physical therapists and occupational therapists) to train specialists in the medical field.

School of Medicine	Organization of Faculty Instructors <small>*The Medical Education Department takes charge of instruction.</small>	
School of Health Sciences	Major	Organization of Faculty Instructors
	Nursing	<ul style="list-style-type: none"> ● Basic Nursing Course ● Clinical Nursing Course
	Physical Therapy	<ul style="list-style-type: none"> ● Maternal/Child nursing course ● Regional and Elderly Nursing Course
	Occupational Therapy	<ul style="list-style-type: none"> ● Physical Therapy Course ● Occupational Therapy Course



Curriculum for the Faculty of Medicine



Faculty of Engineering Science

The Faculty of Engineering Science is striving to train human resources with expertise backed by “reason” and high-level of ethics, and can look at interdisciplinary fields, and who can contribute to Japan as a whole, as well as regionally with an integrated strength. In the first and second years students receive a thorough education in engineering, and in the third and fourth years students take that knowledge and gain a fuller understanding of what it means as they use it in while playing an active role in their area of expertise. During their undergraduate education students can discover questions on their own, have a broad perspective regarding issues in unknown fields, and gain the ability to solve them with flexibility.

■ Faculty Organization (4 Departments)

[Department of Life Science]

Training researchers and engineers to tackle various problems in the life sciences field.

● Life Sciences Course

Students learn to clarify various biological phenomena on the molecular level that makes up living bodies, on an individual cell or individual body level, and at a group organism level.

[Department of Materials Science]

Training researchers and engineers who will deal with leading-edge, functional materials and chemical processes.

● Applied Chemistry Course

Students will study a broad spectrum of specialized chemical fields from chemical engineering that deals with organic and inorganic materials and energy, to bioprocesses.

● Material Science and Engineering Course

A wide range of fields are studied starting with the fundamental sciences focusing on solid-state physics, solid-state chemistry, metallic materials science and engineering, ceramic materials.



[Department of Mathematical Science and Electrical-Electronic-Computer Engineering]

Training multi-faceted human resources to lead in fields from mathematics and physics to electrical and electronic telecommunications.

● Mathematical Science Course

Students study mathematical and computer sciences with a focus on algebra, geometry, mathematical analysis, discrete mathematics, quantum mechanics and electromagnetics.

● Electrical and Electronic Engineering Course

Students learn about the fundamental technology that supports electric, electronic, information, and communications engineering, focusing on electric power engineering, semiconductor device engineering, measurement electronics, and electric mechanical science.

● Human-Centered Computing Course

Students will learn advanced applied technology that has a foundation in computer science, with a focus on human computer interaction, welfare communication engineering, image analysis, and information communications and networks.

[Department of Systems Design Engineering]

Training practical engineers to be able to create new things.

● Mechanical Engineering Course

Students study the mechanical engineering that makes up the foundation of every industry, with a focus on material mechanics, fluid dynamics, thermodynamics, machine mechanics, control engineering, nanotechnology, medical engineering, biomechanics, and robotics.

● Creative Manufacturing Engineering Course

Students learn about a wide range of engineering disciplines with a focus on design engineering, creative production science, electrical and electronic circuits, system control engineering, rocketry, and a practical research project.

● Civil and Environmental Engineering Course

Students learn the technology to create and preserve a safe, secure and comfortable local environment with a focus on structural design studies, construction material science, ground disaster prevention engineering, and environmental hydraulics.

■ Distance Learning

Akita University Faculty of Engineering is the only national university that offers “public distance learning courses”. Since the first class was held in 1948, over 1700 society graduates have been produced against the background of tradition and history.

In order to gain general background knowledge in scientific technology, a general scientific technology course and courses to study the basics and specifics in resources, materials or electronics and electronics are offered.

Graduate School

Graduate School of Education

The Graduate School of Education aims to provide graduates advanced specialized knowledge of education, and psychology and development, as well as school education management ability, and practical teaching ability.

In addition to accepting current teaching staff, the School also actively accepts students from abroad.

Master's Degree Program	
School Education	School Education Psychological Education
Major Subject Education	Japanese Language Education, Social Studies Education, Mathematics Education, Natural Science Education, Music Education, Art Education, Health and Physical Education, Home Economics Education, English Education



Graduate School of Medicine

Graduate School of Medicine The Graduate School of Medicine aims to train excellent researchers and highly specialized medical staff who possess an international perspective, and who can promote the most advanced research in medicine, medical and life sciences, contributing to the development of health and welfare for humankind.

Master's Degree Program		
Medical Science		
Master's Degree Program / Doctorate Degree Program		
Health Sciences	Master's Degree Program	Nursing Science Rehabilitation Science
	Doctorate	Science for Supporting the Development of Women and Children Health and Wellness Development
Doctorate Degree Program		
Medicine	Bioregulatory Medicine, Oncoregulatory Medicine Organ Function-Oriented Medicine, Public Health and Environmental Medicine, Cooperative Division	



Graduate School of Engineering and Resource Science

The Graduate School of Engineering and Resource Science stands on the establishing principle of the Faculty of Engineering and Resource Science and in order to create new areas of research, it is made up of the Master's program, which consists of 9 majors corresponding to the departments within the faculty, and the doctoral program consists of 5 majors based on new concepts.

Master's Degree Program	
Earth Science and Technology	Applied Earth Sciences Geo-Engineering
Applied Chemistry	Molecular Chemistry Chemical Engineering
Life Science	Life Science
Materials Science and Engineering	Materials Science Functional Materials Science Advanced Materials for Energy Science Materials Processing Engineering
Computer Science and Engineering	Information Technology Engineering Mathematical Science
Mechanical Engineering	Mechanical Engineering Science Mechanical Dynamics Systems Design Robotics and Welfare Engineering
Electrical and Electronic Engineering	Electric Energy Engineering Photonic and Electronic Device Engineering Intelligent Information and Communication Engineering Control System Engineering
Civil and Environmental Engineering	Welfare Environment Engineering Structures and Materials Engineering Regional Environment Engineering
Cooperative Major in Life Cycle Design Engineering	Life Cycle Strategies Systems Engineering for Environment
Doctorate Degree Program	
Geosciences, GeoTechnology, and Materials Engineering for Resources	Earth Resource Science Technology for Resources and Environment Environmental and Resource Recycling Technology
Life Sciences	Life Sciences
Advanced Materials Engineering	Advanced Materials Engineering Environmental Chemistry and Chemical Engineering
Production and Civil Engineering	Production System Engineering Civil Engineering Welfare System Engineering
Electrical, Electronic and Computer Systems Engineering	Electrical and Computer Systems Engineering Electronic and Computer Systems Engineering

Special Course : New Frontier Leaders on Resources (five-year integrated doctoral degree)	
Master's	Earth Science and Technology, Applied Chemistry
Doctorate	Geosciences, GeoTechnology, and Materials Engineering for Resources Advanced Materials Engineering



University Facilities

University Library

University Hospital

Mining Museum

Affiliated Schools and Facilities for Education and Research

- Kindergarten ○Elementary School ○Junior High school ○Special Support School
- Center for Educational Research and Practice ○Mining Museum
- University Hospital ○University Hospital Medical Simulation Center
- Research Center for Engineering Science
- Innovation Center for Engineering Design and Manufacturing
- Research Center for Development of Disaster Prevention

Campus-wide Joint Use Facilities

- Research Center for Biosignal ○General Information Processing Center ○Venture Business Laboratory
- Bioscience Education and Research Center ○Radioisotope Research Center ○Environmental Research Center
- Venture Incubation Center ○Cooperative Research Center
- International Center for Research and Education on Mineral and Energy Resources ○Center for Regional Development

Centers

- Center for Evaluation ○Center for Promotion of Educational Research and Affairs ○Student Support Center
- Center for Teaching License Extension ○International Exchange Center

Engineering Organization

- General Technology Section

Welfare Facilities

- Health Center ○University Hall (Clair) (Tegata Campus) ○Hondo Hall (Medikoko) (Hondo Campus)
- Student Dormitories ○International House ○International Student House
- Nyuto Lodge (Recreation Facility)

Athletic Facilities

- Athletic Track stadium ○Baseball field ○Handball court ○Large gymnasium ○Small gymnasium
- Martial Arts gymnasium ○Archery field ○Tennis court ○Swimming Pool (25m) ○Exercise ground

Tokyo Satellite Office

Yokote Branch School/Kita Akita Branch School/Oga Namahage Branch School

Information Center

University Library



Central Library (main entrance)

● The two University Libraries, the Central Library (Tegata Campus) and the Medical Library (Hondo Campus), provide books, magazines, audio-visual materials, electronic information, and other study materials for student use, while systematically managing the collection.

● Number of books in the collection Central Library: 422,000 books
Medical Library: 109,000 books

〈Opening Hours〉

Category	On each semester	On Long-term Breaks
Weekdays	8:30am – 10:00pm	8:30am – 5:00pm
Sat, Sun, Holidays	12:00pm – 6:00pm	Closed

● The University Library offers study, educational and research support to students and faculty members. The “Commons Group Study Room” has been newly established where students realize their active learning. Also, as a library open to the community, the general public can also use the library to browse and borrow materials.

〈Services〉

- Browsing
- Lending/Reserving
- Photocopying
- Reference
- Library Catalog
- Various databases
- Use of PCs, electronic board, and other equipment



Central Library browsing floor



Special collection. The entire works of Shakespeare published in the 18th century is housed here.



Central Library lounge



Central Library “Commons”



医学図書館コモンズ

● For more detailed information

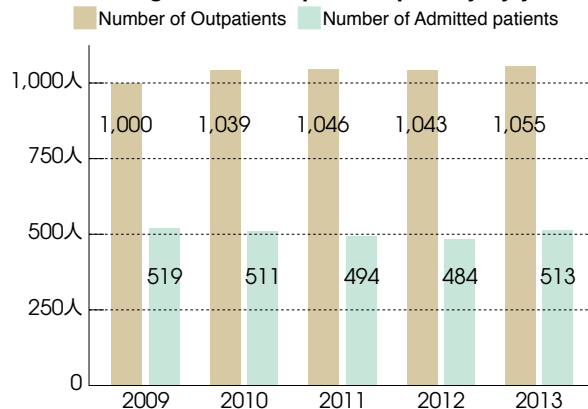
〈Central Library〉
TEL.018-889-2279 E-mail : riyos@lib.akita-u.ac.jp
〈Medical Library〉
TEL.018-884-6052 E-mail : ibun@lib.akita-u.ac.jp

〈University Library Homepage〉
<http://www.lib.akita-u.ac.jp/>

〈Number of Patients (Admitted and Outpatient) by Department〉 FY2013

Department	Admitted		Outpatient	
	Total number	Average number of patients per day	Total number	Average number of patients per day
Gastroenterology	13,947	38	19,610	80
Neurology	2,724	7	5,106	21
Cardiovascular Internal medicine	8,491	23	16,400	67
Respiratory medicine	6,048	17	6,060	25
Hematology	12,324	34	5,907	24
Nephrology	1,341	4	2,429	10
Rheumatology	2,157	6	6,714	27
Diabetes and Endocrinology	3,920	11	16,342	67
Geriatrics	0	0	0	0
Gastroenterological surgery	8,897	24	4,468	18
Respiratory surgery	4,224	12	1,717	7
Esophageal surgery	6,516	18	1,815	7
Mammary gland/Endocrinology	1,458	4	4,512	18
Cardiovascular surgery	11,417	31	2,822	12
Neurosurgery	10,404	29	8,013	33
Pediatric surgery	1,156	3	1,753	7
Pediatrics	10,192	28	8,200	33
Obstetrics	5,102	14	4,370	18
Gynecology	5,710	16	16,389	67
Psychiatry	10,824	30	19,757	81
Orthopedics	12,952	35	15,821	65
Dermatology	5,309	15	17,953	73
Urology	11,259	31	14,662	60
Ophthalmology	9,492	26	16,749	68
ENT	12,336	34	16,331	67
Diagnostic Radiology	82	0	1,039	4
Radiotherapy	3,065	8	3,004	12
Anesthesiology	84	0	1,211	5
Rehabilitation	0	0	0	0
Oncology	1,766	5	1,701	7
Emergency	369	1	2,752	11
Dental and Oral surgery	3,646	10	13,811	56
Total	187,212	513	257,418	1,051

〈Average number of patients per day by year〉



〈Central Examination Facilities〉

- Central Testing department ● Central Surgery department
 - Central Radiology department ● Central Materials department
 - Intensive Care Unit ● Emergency department
 - Transfusion department ● Rehabilitation department
 - Medical Information department ● Blood Purification Therapy department
 - Central Medical History department ● Perinatal Maternal and Child Center
 - Pathology department ● Comprehensive Exam department
 - Treatment Management Center ● Clinical Engineering Center
 - Transplant Testing Center ● Post-graduate Clinical Research Center
 - Career Support Center for Doctors ● Endoscopy/Ultrasound Center
 - Genetic Medicine department ● Oncology Information Center
 - Consultation Support Center ● Chemotherapy department
 - Palliative Care Center ● Psychosomatic Center
 - Nutrition Management department ● Hepatic Disease Consultation Center
 - Medical Doctor Support Center ● Center for Kidney Disease and Transplantation
-
- Medical Safety Management department
 - Infection Control unit
 - Pharmaceutical department
 - Nursing department



Helipad and Multistory parking lot

Mining Museum



〈Admission〉

- Opening Hours/9:00a.m. – 4:00p.m.
- Closed/Year end and New Year's (December 26 – January 5)
- Admission fee/ <Adults> 100 yen
<High school students and younger> Free

〈FY2014 Events at the Mining Museum〉

● Junior Science School

- <Date> End of July (2 days)
- <Participants> 6 graders in elementary school

● National Cultural Festival Special Exhibition

- (The 29th National Cultural Festival – Akita 2014 Support Project)
- <Date> October – November
- <Venue> Mining Museum



First floor exhibition
Apophyllite (India, Jalgon)



Explanation from a science volunteer



Museum shop



FY2013 Junior Science School
"Use the Earth's Strata and Fossils to Discover the Past!
~By collecting fossil shells and making specimen~"



Central Hall

Affiliated School and Facilities for Education and Research

As of May 1, 2014



〈Faculty of Education and Human Studies〉

● Affiliated School Grounds

Category		Total Capacity	Number of Classes	Number of Actual Students						
				Grade1	Grade2	Grade3	Grade4	Grade5	Grade6	Total
Kindergarten	2-year childcare	100	5	—		〈4year-old〉 37		〈5year-old〉 39		76
	3-year childcare	60		〈3year-old〉 22	〈4year-old〉 22	〈5year-old〉 20				64
Elementary School		675	18	97	92	93	89	94	100	565
Junior High School		480	12	148	145	145	—		438	
Special Support School	Elementary School Department	18	3	5		7		5		17
	Junior High School Department	18	3	7	7	8	—		22	
	High School Department	24	3	10	8	7	—		25	



〈Faculty of International Resource Sciences〉

● Mining Museum

〔Facility Purpose〕

- Conduct education, research and investigations regarding the mining industry
- Collect, preserve and display museum resources related to the mining industry
- Material samples/ Approximately 20,000
- Models/Approximately 100



〈Faculty of Medicine〉

● University Hospital Medical Simulation Center

〔Facility Purpose〕

Established in a joint cooperation by Akita Prefecture and Akita University to further develop the skills of the medical staff in Akita Prefecture with an emphasis on "medical simulation education", the new foundation for Akita Prefecture's healthcare

- 1st floor: TV Seminar Room *2nd floor: First-aid lab, Basic Clinical Techniques lab *3rd floor: Surgery Training room, Surgery Techniques lab,OB/GYN lab, Specialized Clinical Techniques lab

〈Faculty of Education and Human Studies〉

● University Center for Educational Research and Practice

〔Facility Purpose〕

Promote comprehensive research regarding practical education in learning environments and clinical pedagogy, etc.

〔Research Sections〕

School Education Research Section, Teacher Development Research Section, Clinical Education Research Section, School Liaison Office, Career Support Office for Teachers, Clinical Psychology Consultation Room

〈Faculty of Medicine〉

● University Hospital

〔Facility Purpose〕

Conduct medical education and research through providing patients with healthcare

- 32 Medical departments
- 613 Hospital beds



〈Graduate School of Engineering and Resource Science〉

● Research Center for Engineering Science

〔Facility Purpose〕

Conduct research based on the integration of science and engineering in the fields of environment, energy, materials, etc. that can be presented globally and contribute to society locally

〔Research Sections〕

Global Environment Research section, Environmentally-friendly Materials, Process Research section



〈Graduate School of Engineering and Resource Science〉

● Innovation Center for Engineering Design and Manufacturing

〔Facility Purpose〕

Promote actual manufacturing and hands-on learning and to nurture innovative engineers and contribute to the local community through seminars on manufacturing and scientific technology

〔Center Activities〕

Student-centered projects, Manufacturing classes for children, Manufacturing classes for adults, License lectures, Manufacturing lecture series, Noshiro Space Event, Akita Space Consortium, Manufacturing supply center



〈Graduate School of Engineering and Resource Science〉

● Research Center for Development of Disaster Prevention

〔Facility Purpose〕

Promote research that will contribute to the prevention and mitigation of natural disasters and contribute to forming a safe and secure local community through supporting and researching the prevention and mitigation of local disasters

〔Research Sections〕

Earthquake disaster section, Tsunami disaster section, River disaster section, Landslide disaster section, Volcanic disaster section, Information and planning section

University Common Use Facilities



● Research Center for Biosignal

[Purpose of Establishment]

Conduct unique research activities involving the biological information molecules of lipids, proteins, nucleic acids, etc., cooperate organically with similar Japanese and foreign organizations, for example Gunma University, and maintain an environment for an open science and technology dialog with the Japanese people, continuously share the research results obtained at this school with the community and the world.



● General Information Processing Center

[Facilities and Equipment]

- Educational PCs (total 388) : PC study rooms 1-5, PC study rooms A/B, Hondo PC study room, Group study corner, Scanner corner, Multilingual corner
- Information services: Web mail, Study support system, Large-size printer, Large-scale computing server (Express5800/A1080a-D), Virtual server hosting(Express/B120b-d)
- Information network : LAN cable (1-4 Gbps to the floor switch), Wireless LAN (30 locations total), Connection network outside the university (1 Gbps)



● Venture Business Laboratory

[Facilities and Equipment]

- New recycling technique and assessment system: Particle size and surface potential analyzer, Ion chromatograph, Measuring microscope, Scanning probe microscope, ICP emission spectrometer, Differential thermal balance, Disk-type manual grinder, Roll-type magnetic separator, Laser date electrometer, ERIEZ nonferrous metal sorter, Vacuum arc melting furnace, etc.
- High-function material planning and assessment systems: Multilayer film production device, Multiple alloy film production device, Scanning electron microscope, High vacuum scanning probe microscope, High sensitivity magnetization measurement device, High vacuum heat treatment apparatus, Thin film x-ray diffraction apparatus, Powder x-ray diffraction apparatus, Magnetic storage material analysis and evaluation system



● Bioscience Education and Research Center

[Facilities and Equipment]

- Animal Center: [Small animals section] SPF animal housing rooms (16 rooms), clean animal housing rooms (9 rooms), procedure rooms (4 rooms) [Mid-Large animals sections] SPF animal housing room (1 room), clean animal housing room (5 rooms), procedure rooms (4 rooms), X-ray room, etc. [Special Experiment section] Infectious animal procedure room, chemical hazard procedure room, swine endoscopy training room, etc.
- Radioisotope Laboratory: [Management Equipment] comprehensive radiation control system and various survey meters [Procedure Equipment] various centrifuges, 2 GeneAmp PCR Systems [Measurement Equipment] 2 liquid scintillation counters [Modified Genetics Procedure Equipment] rotating incubator, high-speed refrigerated centrifuge
- Department of Molecular Medicine: Transmission electron microscope, various spectrophotometers, gene transferring equipment, DNA sequencer, DNA amplification equipment, flow cytometer, confocal laser scanning microscope, etc.
- Department of Education and Research Liaison
- Department of Welfare and Medical Engineering



● Radioisotope Research Center

[Facilities and Equipment]

- Unsealed source experiment area: -10°C and 4°C experiment laboratories: 3 fume hoods and 1 biosafety cabinet, liquid scintillation counter, tritium gas measuring and experiment equipment, various scalers, survey meters and plate analyzers
- Sealed source experiment area: Multi-channel gamma spectrometer, high-performance liquid chromatograph mass spectroscope, image analyzer, horizontal x-ray diffractometer

16 types of unsealed sources and 5 types of sealed sources are available for use.



● Environmental Research Center

[Facilities and Equipment]

- Waste Treatment Building: inorganic waste – ferritization processing, organic waste/ hazardous solid waste – spray combustion/ incineration, mercury, cyanide waste – oxidative decomposition and absorption processing, fluorine-phosphoric acid-based waste – calcification processing, COD waste – Fenton treatment
- Experiment and Analysis Building: Gas chromatograph/ mass spectrometer, gas chromatograph, atomic absorption spectrophotometer, liquid chromatograph, X-ray analysis equipment, other necessary equipment

for Education and Research



● Venture Incubation Center

[Facilities and Equipment]

(Equipment implemented at the Akita Industry Academia and Government Cooperative Research Center installed in the Center)

Ultrapure water production system, fume hood, microwave sample pretreatment system, ultra-high resolution field emission scanning electron microscope, carbon, hydrogen, nitrogen, sulfur, oxygen fully automated analyzer, flame/furnace high-resolution continuum source atomic absorption spectrometer, elemental analyzer, high-resolution nuclear magnetic resonance spectrometer (600MHz), x-ray photoelectron spectrometer, micro-focus x-ray CT fluoroscopy equipment, mercury porosimeter, ultra-high performance liquid chromatographic system, light scattering GPC molecular weight measurement device, Terahertz spectral measurement device, bipolar power supply, activated sludge treatment equipment, spray dryer equipment, specific surface area and pore size distribution measuring apparatus, catalyst analyzer (7 gas inlet lines), real-time PCR system, multi-label counter, rotational viscometer (with L adapter), quadrupole – flight time MS/MS analysis system, gas absorption measuring equipment, modular electrochemical measurement system, confocal laser scanning microscope, matrix-assisted laser desorption ionization flight time mass spectrometer bio-clean bench

● Cooperative Research Center

[Purpose of Establishment]

Advance joint research with extra university organizations to develop Akita University's education and research level. Promote to share intellectual property and intellectual property within the community from the research results. Contribute to the technological development and technological development promotion in society.

● International Center for Research and Education on Mineral and Energy Resources

[Purpose of Establishment]

Train advanced resource development professionals with a global perspective, and contribute to the establishment of Japan's resource security and stable resource supply system. Create an international resource network for further international exchange and global contributions.

● Center for Regional Development

[Purpose of Establishment]

From the view of the knowledge creation for the community revitalization, it offers proper advice for residents' various activities. Also, by learning from the community, we enhance our quality and to realize a virtuous cycle.

Center for Education and Research

	Purpose of Establishment
Center for Evaluation	<ul style="list-style-type: none"> ● To support self-evaluation, assessment activities, and the effort to improve them at Akita University ● To research and develop a system of evaluation
Center for Promotion of Educational Research and Affairs	<ul style="list-style-type: none"> ● To promote the structure and educational activities of an education system centered on a fundamental background education ● To improve and enhance fundamental background education and specialized education through investigation, research and development
Student Support Center	<ul style="list-style-type: none"> ● To provide living support to students through various types of consultation, and through tuition waivers and scholarship award recommendations. ● To provide support for extracurricular activities such as the university festival, and to promote the maintenance and improvement of extracurricular activity facilities ● To provide employment guidance and to support job-hunting activities by providing job information, etc.
Center for Teaching License Extension	<ul style="list-style-type: none"> ● To plan and execute training for teaching license extensions ● Liaise with prefectural boards of education, universities and other organizations
International Exchange Center	<ul style="list-style-type: none"> ● Planning and advertising activities related to international exchange ● To promote international scholarly exchange ● To promote international educational exchange

Technological Organization

	Purpose of Establishment
General Technology Section	<ul style="list-style-type: none"> ● To provide campus-wide technological support for educational research activities ● To maintain and develop the expertise of the engineering faculty as a common asset of the university, and to improve those capabilities and qualities and to ensure excellent human resources.

Welfare Facilities

Facility	Major information			
Health Center	Student consultation room, relaxation room, examination room, treatment room, x-ray room, auditory testing room, ECG room, counseling room, testing lab, Director's office, Associate Professors' office, office, equipment room			
University Hall (Clair) (Tegata Campus)	<ul style="list-style-type: none"> ● 1st floor/Management office, cafeteria, kitchen, café, food and "bento" corner, amenities corner, part-time job center ● 2nd floor/Training rooms (1,2,3), Japanese style rooms (Ajisai, Rindo), meeting room, school store and travel corner 			
Hondo Hall (Medikoko) (Hondo Campus)	<ul style="list-style-type: none"> ● 1st floor/Cafeteria, kitchen, kiosk, office, storage ● 2nd floor/Training rooms, consultation room, large meeting room, small meeting room, Japanese style room, supply closet 			
Student Dormitories	Category	Tegata Dorm (Female) (excluding international students)	Hondo Dorm (Female) (excluding international students)	Nishiyachi Dorm (male) (including international students)
	Total Building Area	745㎡	1,121㎡	3,170㎡
	Number of Rooms	40	31	130
	Maximum Capacity	40	31	130
International House	<ul style="list-style-type: none"> ● Rooms/Individual rooms (28 rooms for international students, 5 rooms for international researchers), family rooms (2 rooms for international researchers), couple rooms (3 rooms for international researchers) ● Management related/Management office, maintenance room, storage ● Common rooms/ All-purpose hall, meeting room, laundry room 			
International Student House	<ul style="list-style-type: none"> ● Rooms/Individual rooms (27 rooms), couple rooms (3 rooms) ● Management related/Office, machine room, storage ● Common rooms/Meeting room, Japanese style room, laundry room 			
Nyuto Lodge	<ul style="list-style-type: none"> ● Cafeteria, training room ● Baths (male / female) ● Accommodations/ 3 Japanese style rooms, 2 Western rooms (30 person capacity) 			



University Hall (Clair)
(Tegata Campus)



Nishiyachi Dorm



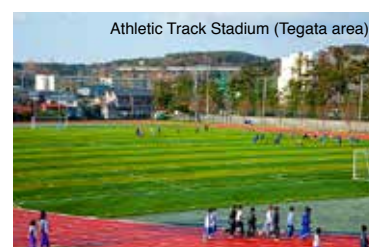
International House



International Student House

Sports Facilities

Facility	Area (㎡)			Comments
	Tegata area	Hondo area	Hodono area	
Athletic Track Stadium	24,637	} 20,909	—	400m / 6 courses, main/8 courses
Baseball field	20,378		—	—
Sports field	Used jointly with the Athletic Track, artificial turf	Used jointly with the Athletic Track	—	soccer, rugby (Hondo area has soccer, rugby, archery, soft baseball)
Handball court	—	—	—	—
Large gymnasium	2,591	1,079	3,588	basketball, volleyball, badminton, judo, kendo, etc. (Hondo area has volleyball, badminton, basketball, table tennis, futsal)
Small gymnasium	650	—	—	gymnastics, table tennis, karate, etc.
Martial arts gymnasium	—	—	373	judo, kendo
Archery field	149	—	—	—
Tennis courts	(5courts) 3,238	(5courts) 3,614	—	—
Swimming Pool(25m)	800	—	—	—
Exercise ground	—	—	14,923	—



Athletic Track Stadium (Tegata area)



Gymnasium (Tegata area)

Tokyo Satellite Office

The “Akita University Tokyo Satellite” is a base to; 1. provide information to university hopeful students, 2. promote our cooperation among industry, academia and government and to conduct activities 3. to act social contribution in the Greater Tokyo area.

〈Responsibilities〉

1. Provide information to university hopeful students

- Offer the entrance exam orientations, entrance exam information to high schools, visit those schools

2. Support cooperative activities among industry, academia and government

- Act as the consultation window for joint research and science and technology
- Provide academic information, seeds of technology
- Hold academic meetings such as symposiums, conferences and research groups
- Introduce researchers and research results

3. Support social contribution activities

- Hold lectures and seminars

4. Support job-hunting

- Accept applications for job offers from companies
- Provide students with job information

5. Support alumni activities

- Provide alumni with university related information

- **Location** 108-0023 3-3-6 Shibaura, Minato-ku, Tokyo-to
- **Telephone / FAX** 03-5440-9104
- **Homepage** <http://www.akita-u.ac.jp/honbu/satellite/>



Campus Innovation Center

Yokote Branch School, Kita Akita Branch School, Oga Namahage Branch School

The Yokote city, Kita Akita city and Oga Namahage city branch schools have been established in an effort to disseminate information from Akita University throughout the prefecture and have a closer cooperative relationship with local communities.

Yokote Branch School

〈Opened August 5, 2009〉

- Programs are implemented in an effort to encourage student participation in community activities, like the making of “iburigakko” (a smoked pickle in Akita), and to resolve community issues.
- Cooperative programs with elementary, junior high and high schools are promoted, such as the “Mini Education Practicum”, for students are hoping to become teachers.

- **Contact**
013-0036 1-21Ekimae-cho, Yokote-shi
Yokote City Exchange Center Y2 (Y-Y) Plaza
- **TEL** 0182-38-8304
- **FAX** 0182-32-4056

Kita Akita Branch School

〈Opened November 17, 2010〉

- Programs, such as training for teachers and delivery classes where teachers are dispatched, are implemented.
- Diatomaceous earth and other regional resources are utilized and efforts are made to support the education of elementary, junior high and high school age children.

- **Contact**
018-3392 19-1 Hanazono-cho, Kita Akita-shi
Kita Akita City Hall, General Affairs Department,
General Affairs Section, General Affairs Group
- **TEL** 0186-62-1111
- **FAX** 0186-63-2586

Oga Namahage Branch School

〈Opened September 30, 2013〉

- Making efforts to raise the level of education through projects like utilizing students’ strength to support the self-study, self-learning of children and visits to the Faculty of Medicine.
- Making efforts towards community revitalization through increasing the number of people who visit the area by inviting university cultural and athletic clubs in the Greater Tokyo area to hold overnight camps in the area.

- **Contact**
010-0595 66-1 Izumidai, Funagawa,
Funagawaminato, Oga-shi
Oga city General Affairs Planning Department
Strategic Planning Section
- **TEL** 0185-24-9126
- **FAX** 0185-23-2424

Information Center

Here, we display our education and research including regular exhibitions on the works of our prominent graduates, Tamezo Narita and Keishi Nagi. Also, various events and concerts are held by current students and faculty members.

〈Admission Information〉

- Opening Hours/10:30 a.m. – 5:00 p.m.
- Opening Days/Weekdays only (Entrance is free)



Information Center Exterior



Students in the Open Space

〈Main Items on Permanent Display〉

● Introduction of Graduates



Tamezo Narita

A graduate of the Akita Prefecture Normal School (predecessor to the Faculty of Education and Human Studies). He left more than 300 outstanding songs to the world such as “Song of the Beach” and the “Akita Prefectural Song”. Research has shown that he began seriously studying composition while attending the Akita Prefecture Normal School.



Keishi Nagi

A member of the second graduating class of the Akita University Faculty of Medicine. He continues to work as a doctor at the Saku General Hospital in Nagano prefecture, as well as authoring books. His works include “Medical Student”, whose stage is set at the newly established Akita University Faculty of Medicine, and portrays the worries and conflicts of its main characters, 4 young medical students, and “Diamond Dust”, which was the winner of the 100th Akutagawa award.

● Akita University 3D Project

A program created by students in the “Student-centered Project” at the affiliated “Innovation Center for Engineering Design and Manufacturing”. By using the controller, you can enjoy free, virtual stroll around the campus.



〈Major Projects and Concerts〉



The “Ayumi” (footsteps) display for kindergarten education



“Akita University Recreation Concert”

Information

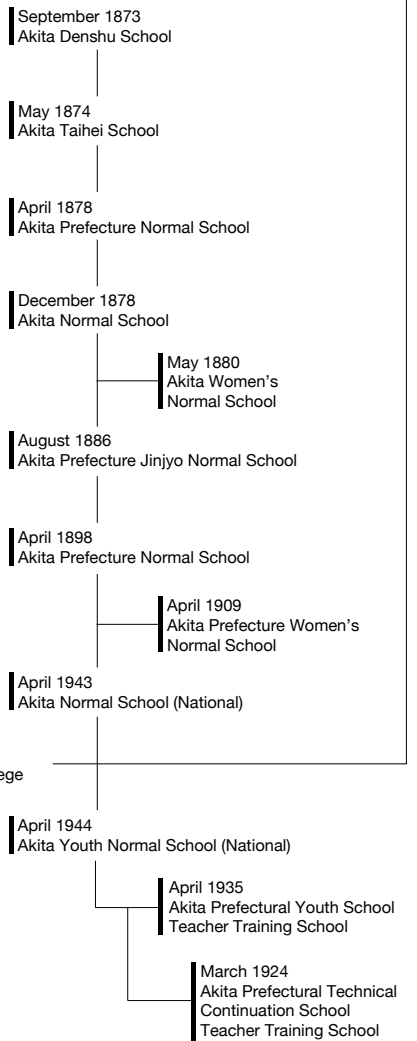
- Historical Sketch
- Academic Organization
- Student Quota, Current Student Data
- New Student Application and Entrant Data
- Graduate Data
- Degree Conferral Data
- International Student Data
- International Researcher Data
- Overseas Partner Universities
- Administrator Data/ Instructor Data
- Budget for FY2014
- Accepted External Funding Status
- Telephone Numbers and Addresses
- Tegata Campus Map
- Hondo Campus Map/Hodono Campus Map
- Access

Historical Sketch



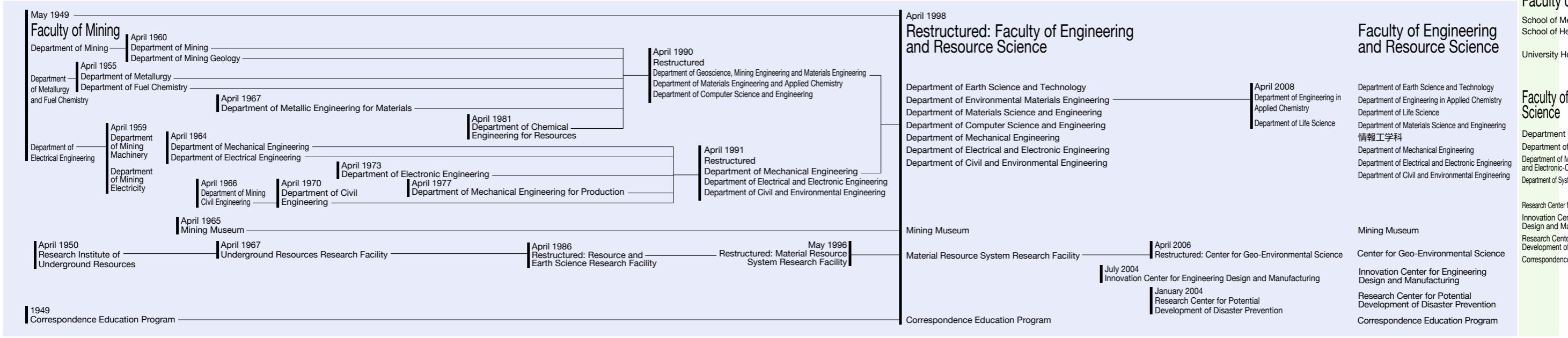
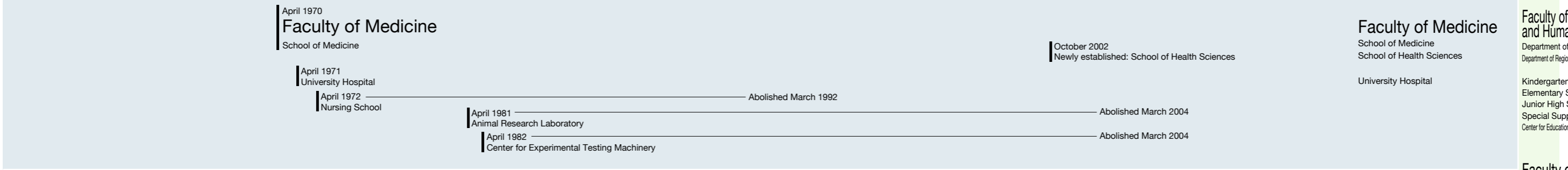
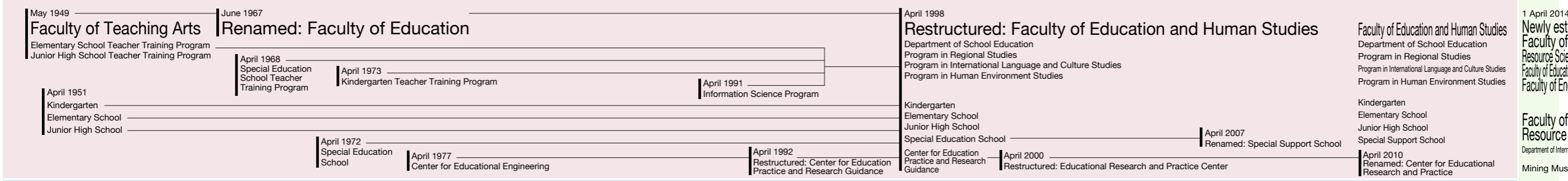
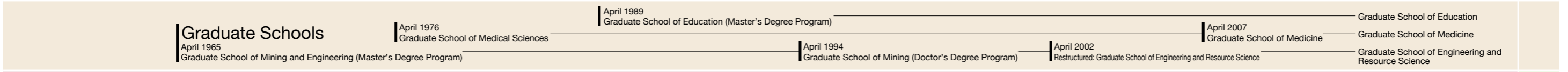
● **100th Anniversary Hall (Constructed October 2012)**

Built to commemorate the 100th anniversary of the founding of the Faculty of Engineering Resources
 Its exterior inherits the Akita Mining College building, the predecessor to Akita University



1945 1965 1975 1985 1989 1990 1991 1992 1994 1996 1998 1999 2000 2002 2004 2006 2007 2008 2009 2010 2011 2012 2013 2014

May 1949 Akita University established 1999 50th anniversary National University Corporation April 2004 60th anniversary 2009



College of Allied Medical Science
(April 1989 – March 2007)

- Department of Physical Therapy, Department of Occupational Therapy (separated and expanded April 1990) [Department of Nursing (October 1989)]

Non-degree Post-graduate Courses

- Advanced Course of Mining (April 1954 – March 1965)
- Advanced Course of Education (April 1965 – March 1989)
- Special Advanced Course of Special Education (April 1980 – March 2008)

University Common Use Facilities for Education and Research

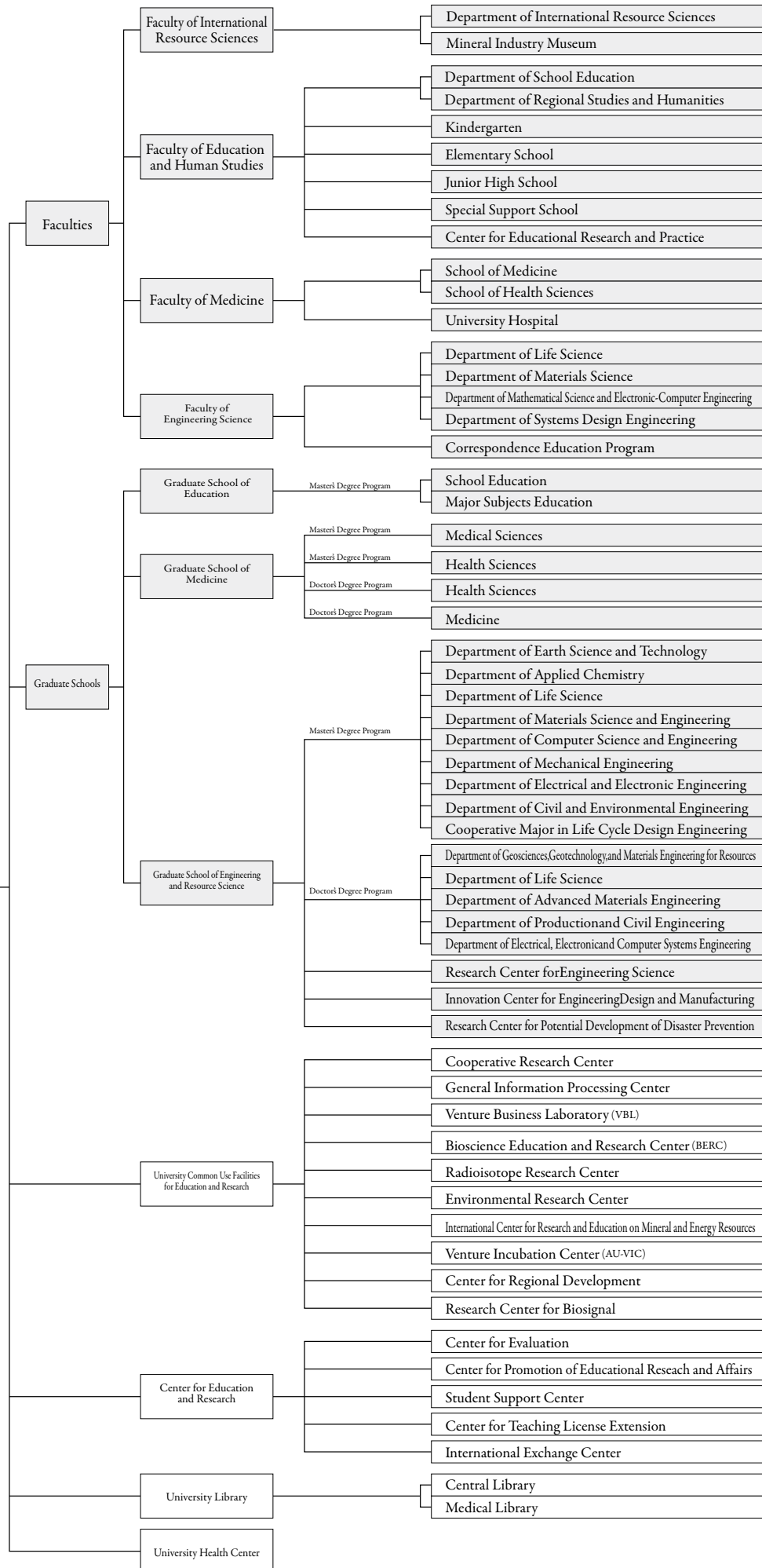
- Cooperative Research Center (November 2007) [Intellectual Property Headquarters (April 2004) + Regional Cooperative Research Center (January 1989)]
- General Information Processing Center (April 2003) [Information Processing Center (January 1989)]
- Venture Business Laboratory (April 2003) [Satellite Venture Business Laboratory (May 2001)]
- Bioscience Education and Research Center (April 2004) –Radioisotope Research Center (June 1974)
- Environmental Research Center (April 2004) –International Center for Research and Education on Mineral and Energy Resources (October 2009)
- Venture Incubation Center (April 2010)
- Center for Regional Development (April 2011) –Research Center for Biosignal (April 2012)

Centers for Education and Research

- Center for Evaluation (April 2004)
- Center for Promotion of Educational Research and Affairs (April 2004)
- Center for Teaching License Extension (April 2009)
- Student Support Center (April 2004)
- International Exchange Center (February 2008) [Organization for the Promotion of International Exchange (April 2004)]
- *Organization for the Promotion of Social Contribution (April 2004 – March 2009)

- University Library (May 1949)
- University Health Center (April 1974)

Academic Organization



Student Quota, Current Student Data

<Faculties>

As of 1 May 2014

Faculty	Department/Program	Max. Enrollment Capacity	Max. Student Capacity	Current Students						Total	
				Year 1	Year 2	Year 3	Year 4	Year 5	Year 6		
Faculty of International Resource Sciences	Department of International Resource Sciences	120	120	127							127
	Total	120	120	127							127
Faculty of Education and Human Studies	Department of Social Education	110	410	116	105	121	107				449
	Department of Regional Studies and Humanities	100	100	103							103
	Program in Regional Studies		195		66	69	72				207
	Program in International Language and Culture Studies	*1	195		67	76	80				223
	Program in Human Environment Studies		180		62	67	68				197
	Total	210	1,080	219	300	333	327				1,179
Faculty of Medicine	School of Medicine	(5)122	734	123	128	125	132	122	104	734	
	School of Health Sciences	(14)106	452	118	103	117	108				446
	Total	(5)228	1,186	241	231	242	240	122	104	1,180	
Faculty of Engineering Science	Department of Life Science	45	45	44							44
	Department of Materials Science	110	110	115							115
	Department of Mathematical Science and Electronic-Computer Engineering	120	120	134							134
	Department of Systems Design Engineering	120	120	134							134
	Total	395	395	427							427
Faculty of Engineering and Resource Science	Department of Earth Science and Technology	*2	180	3	71	61	56				191
	Department of Environmental Materials Engineering	*1									
	Department of Applied Chemistry		165	4	60	62	65				191
	Department of Life Science		96	3	29	36	31				99
	Department of Materials Science & Engineering		180	2	67	61	80				210
	Department of Computer Science and Engineering	*2	150	2	58	66	63				189
	Department of Mechanical Engineering		231	4	87	98	83				272
	Department of Electrical and Electronic Engineering		225	2	82	96	79				259
	Department of Civil and Environmental Engineering		153	3	56	68	51				178
	各学科共通	12	24								
Total	(12)	1,404	23	510	548	508				1,589	
Total		(5)953	4,185	1,037	1,041	1,123	1,075	122	104	4,502	

*Numbers in () represent third-year transfer students and are not included in the tally. *Numbers in < > represent second-year transfer students and are not included in the tally.

<Graduate Schools>

As of 1 May 2014

School	Department	Max. Enrollment Capacity	Max. Student Capacity	Current Students				Total	
				Master's Degree Program		Doctor's Degree Program			
				Year 1	Year 2	Year 3	Year 4		
Graduate School of Education	School Education	13	26	10	11			21	
	Major Subjects Education	31	62	21	20			41	
	Total	44	88	31	31			62	
Graduate School of Medicine	Medical Sciences	5	10	3	0			3	
	Department							Total	
	Health Sciences	12	24	13	18			31	
	Department							Total	
	Health Sciences	3	9	3	3	7		13	
	Department							Total	
	Medicine	30	120	42	32	27	69	170	
	Department							Total	
	Social Medicine								
	Internal Medicine								
Surgical Medicine									
Total	50	163					217		
Graduate School of Engineering and Resource Science	Department of Earth Science and Technology			19	15			34	
	Department of Environmental Materials Engineering				1			1	
	Department of Applied Chemistry			23	11			34	
	Department of Life Science			11	13			24	
	Department of Materials Science and Engineering			27	22			49	
	Department of Computer Science and Engineering			17	10			27	
	Department of Mechanical Engineering			33	21			54	
	Department of Electrical and Electronic Engineering			23	26			49	
	Department of Civil and Environmental Engineering			6	5			11	
	Cooperative Major in Life Cycle Design Engineering			9	6			15	
	Total			168	130			298	
	Department							Total	
	Department of Geosciences, Geotechnology, and Materials Engineering for Resources			9	2	7			18
	Department of Life Science			4					4
	Department of Advanced Materials Engineering			1	2	3			6
	Department of Production and Civil Engineering			2	1	6			9
	Department of Electrical, Electronic and Computer Systems Engineering			4	1	6			11
Total			20	6	22			48	
Total	183	382					346		
Grand Total		277	633					625	

New Student Application and Entrant Data

<Faculties>

2014 school year

Section	Max. Enrollment Capacity	Applicants			Entrants			Ratio
		Male	Female	Total	Male	Female	Total	
Faculty of International Resource Sciences	120	325	132	457	97	30	127	3.81
Faculty of Education and Human Studies	210	359	511	870	100	118	218	4.14
Faculty of Medicine	228	607	636	1243	98	134	232	5.45
Faculty of Engineering Science	395	1521	373	1894	353	64	417	4.79

*Does not include international exchange students (except for the Faculty of International Resource Sciences). Also does not include transfer students.

<Graduate Schools>

2014 school year

Section	Max. Enrollment Capacity	Applicants			Entrants			Ratio		
		Male	Female	Total	Male	Female	Total			
Graduate School of Education (Master's Degree Program)	44	25	20	45	17	14	31	1.02		
Graduate School of Medicine	Master's Degree Program	Medical Sciences	5	2	1	3	2	1	3	0.60
	Master's Degree Program	Health Sciences	12	5	8	13	5	8	13	1.08
	Doctor's Degree Program	Health Sciences	3	2	4	6	1	2	3	2.00
	Doctor's Degree Program	Medicine	30	31	11	42	31	11	42	1.40
Graduate School of Engineering and Resource Science (Master's Degree Program)	167	174	29	203	131	28	159	1.22		
Graduate School of Engineering and Resource Science (Doctor's Degree Program)		12	4	16	12	4	16	1.00		

*Does not include Japanese government scholarship foreign exchange students or specially selected foreign exchange students.

Undergraduate and Graduate School Graduate Data

<Faculties, Graduate Schools, and Post-graduate Non-degree Courses>

Faculties			Graduate Schools			Post-graduate Non-degree Courses	
Section	2013 School Year	Total	Section	2013 School Year	Total	Section	Total
Faculty of Education and Human Studies	309	3,854	Graduate School of Education	34	801	Advanced Course of Education	78
Faculty of Education		14,519				Special Advanced Course of Special Education	212
Faculty of Medicine	231	4,639	Graduate School of Medicine (Master's Degree Program)	0	57	Advanced Course of Mining	58
			Graduate School of Medicine (Master's Degree Program)	13	44		
			Graduate School of Medicine (Doctor's Degree Program)	3	10		
			Graduate School of Medicine (Doctor's Degree Program)	24	77		
			Graduate School of Medicine	3	791		
Faculty of Engineering and Resource Science	487	5,996	Graduate School of Engineering and Resource Science (Master's Degree Program)	145	1,567	Advanced Course of Mining	58
			Graduate School of Engineering and Resource Science (Doctor's Degree Program)	10	98		
Faculty of Mining		14,522	Graduate School of Mining (Master's Degree Program)		1,270		
			Graduate School of Mining (Master's Degree Program)		1,012		
			Graduate School of Mining (Doctor's Degree Program)		123		
Total	1,027	43,530	Total	232	5,850	Total	348

*Advanced Course of Mining abolished March 1965 *Advanced Course of Education abolished March 1989 *Graduate School of Mining (Master's Degree Program) abolished March 1997 *Faculty of Education restructured/renamed to Faculty of Education and Human Studies in April 1998 *Faculty of Mining restructured/renamed to Faculty of Engineering and Resource Science in April 1998 *Graduate School of Mining restructured/renamed to Graduate School of Engineering and Resource Science in April 2002 *Special Advanced Course of Special Education abolished March 2008 *Graduate School of Medicinal Science restructured/renamed Graduate School of Medicine in April 2007

<College of Allied Medical Science>

Section	Department of Nursing	Department of Physical Therapy	Department of Occupational Therapy
Total	1,015	246	254

*College of Allied Medical Science abolished March 2007

Degree Conferal Data

As of 1 May 2014

Section		2009	2010	2011	2012	2013	Total
Graduate School of Education	Master's Degree (Education)	30	30	24	29	34	801
	Master's Degree (Medical Sciences)	3	4	4	4	0	20
Graduate School of Medicine	Master's Degree (Nursing)	7	10	5	5	6	41
	Master's Degree (Rehabilitation)	7	6	7	5	7	40
	Doctor's Degree (Health Sciences) (Course)			3	4	3	10
	Doctor's Degree (Medicine) (Course)	1	12	19	23	24	79
	Doctor's Degree (Medicine) (Thesis)	5	1	2	1	4	20
	Total	23	33	40	42	44	210
Graduate School of Medicinal Science	Doctor's Degree (Medicine) (Course)	20	8	6	4	3	806
	Doctor's Degree (Medicine) (Thesis)	0	0	0	0	0	574
	Total	20	8	6	4	3	1,380
Graduate School of Engineering and Resource Science	Master's Degree (Engineering)	120	142	168	159	134	1,538
	Master's Degree (Resource Science)	1	3	0	4	3	21
	Master's Degree (Science)					8	8
	Doctor's Degree (Engineering) (Course)	8	12	11	10	10	96
	Doctor's Degree (Resource Science) (Course)	0	0	1	0	0	2
	Doctor's Degree (Engineering) (Thesis)	2	1	0	0	2	10
	Doctor's Degree (Resource Science) (Thesis)	0	0	0	0	0	1
	Total	131	158	180	173	157	1,676
Graduate School of Mining	Master's Degree (Engineering)						2,252
	Master's Degree (Resource Science)						30
	Doctor's Degree (Engineering) (Course)						117
	Doctor's Degree (Resource Science) (Course)						6
	Doctor's Degree (Engineering) (Thesis)						31
	Total						2,436
Grand Total		204	229	250	248	238	6,503

International Student Data

24 Foreign Countries & Regions	Faculty															Total		Graduate School									Total					
	Faculty of International Resource Sciences			Faculty of Education and Human Studies			Faculty of Medicine			Faculty of Engineering and Resource Science			Faculty of Engineering Science			Regular	Non-Regular	Graduate School of Education			Graduate School of Medicine			Graduate School of Engineering and Resource Science			Regular	Non-Regular				
	Regular	Non-Regular	Private	Regular	Non-Regular	Private	Regular	Non-Regular	Private	Regular	Non-Regular	Private	Regular	Non-Regular	Private			Regular	Non-Regular	Private	Regular	Non-Regular	Private	Regular	Non-Regular	Private						
	Sponsored	Gov't	Private	Sponsored	Gov't	Private	Sponsored	Gov't	Private	Sponsored	Gov't	Private	Sponsored	Gov't	Private	Sponsored	Gov't	Private	Sponsored	Gov't	Private	Sponsored	Gov't	Private								
China				7	1	23						15		5	1	27	1	24	1						18	1	18					
				(2)	(1)	(21)						(4)				(6)	(1)	(21)	(1)						(5)	(1)	(5)					
Malaysia												27		3		30									2		2					
												(4)				(4)									(1)		(1)					
Vietnam	2			1								16	1		19		1							1	5	1	5					
	(1)			(1)								(5)			(7)									(1)	(1)	(1)	(1)					
South Korea				2		11									2		11															
				(2)		(7)									(2)		(7)															
Mongolia	3		1			5						1			4		6								1	4	1	4				
	(3)					(4)									(3)		(4)								(1)	(3)	(1)	(3)				
Indonesia																									3		3		1			
																									(2)		(2)		(2)			
Botswana																									2		2		2			
																									(2)		(2)		(2)			
Afghanistan																									1		1					
Taiwan						5											5															
						(5)											(5)															
Egypt																													1			
Romania						1		2								1		2														
						(1)		(1)								(1)		(1)														
Kenya								1									1		1										1			
								(1)									(1)		(1)										(1)			
U.S.A.						1																										
Israel						1										1																
						(1)										(1)																
Thailand																										2		2				
																										(2)		(2)				
Philippines																										1		1				
																										(1)		(1)				
Papua New Guinea																									1	1	1	1				
India																																
Bangladesh												1					1															
Pakistan			1																													
Peru																										1		1				
																													(1)			
Burkina Faso																										1		1				
																													(1)			
Russia						1											1															
Cambodia						1											1															
						(1)											(1)															
Total	0	5	0	2	0	10	5	48	0	0	0	0	60	0	1	83	5	53	2	0	2	0	0	0	7	36	1	1	10	36	3	1
		(4)				(5)	(4)	(39)					(13)			(22)	(4)	(39)	(2)		(2)				(6)	(14)			(8)	(14)	(2)	

*Numbers in () represent female student numbers. **Gov't Sponsored" refers to Japanese government (Monbukagakusho) scholarships, and includes university recommendations, embassy recommendations, and domestic selections.

**Non-regular" refers to Japanese studies students, educational research students, special audit students/special research students (exchange students), credited auditors, and researchers.

**Private" includes foreign government scholarship students (Malaysia and Indonesia).

International Researcher Data

〈Foreign Researchers〉

Actual 2013 school year admissions

Section Name	Country/Region	Number
Graduate School of Engineering and Resource Science	China	2
	Papua New Guinea	1
Venture Business Laboratory	India	1

〈Part-Time Researchers〉

Actual 2013 school year admissions

Section Name	Country/Region	Number
Graduate School of Engineering and Resource Science	India	2
	Ghana	1
	China	3
	Mongolia	1
Venture Business Laboratory	China	4
	India	1

〈Foreign Visiting Researchers〉

Actual 2013 school year admissions

Section Name	Country/Region	Number
Graduate School of Medicine	Belarus	2
Graduate School of Engineering and Resource Science	New Zealand	1

[Inter-University Agreements]

(51 universities in 27 countries/regions)

As of 1 May 2014

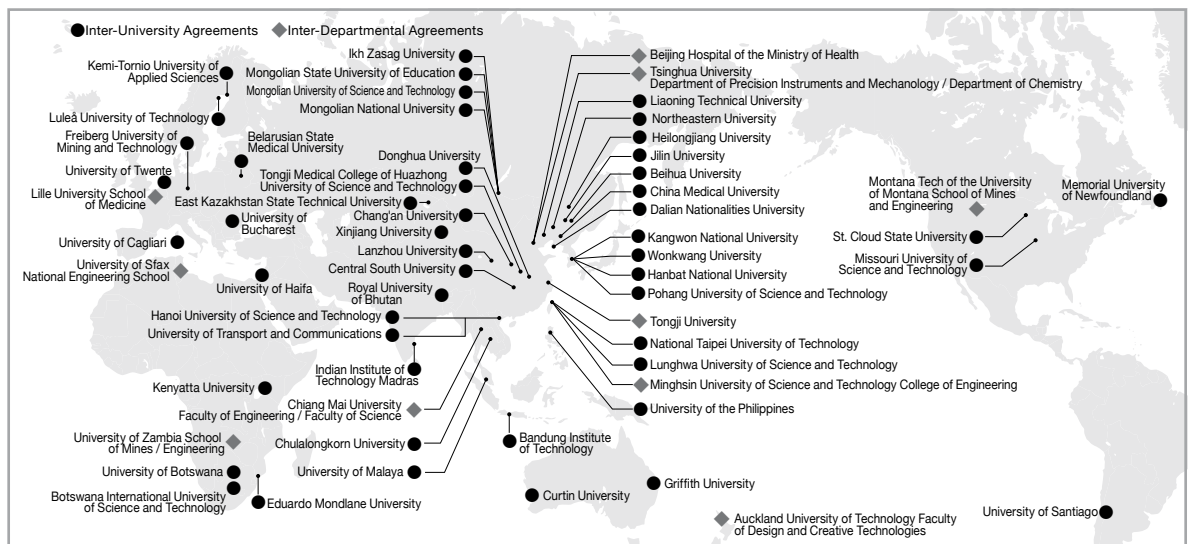
Country/Region	University	Affiliate Since	
Asia	India	Indian Institute of Technology Madras	21 March 2014
	Indonesia	Technology, Institut Teknologi Bandung	12 July 2012
	South Korea	Hanbat National University	8 June 2001
		Wonkwang University	12 October 2007
		Kangwon National University	24 March 2008
		Pohang University of Science and Technology	22 October 2009
	Thailand	Chulalongkorn University	28 November 2012
	Taiwan	Lunghwa University of Science and Technology	15 July 2005
		National Taipei University of Technology	18 July 2005
	China	Heilongjiang University	19 October 1988
		China Medical University	6 October 1989
		Central South University	24 August 2004
		Liaoning Technical University	20 April 2005
		Dalian Nationalities University	27 June 2005
		Lanzhou University	1 August 2005
		Xinjiang University	20 February 2006
		Jilin University	6 February 2007
		Northeastern University	9 August 2007
		Donghua University	3 December 2009
		Tongji Medical College Huazhong University of Science and Technology	24 March 2010
		Chang'an University	18 November 2010
		Beihua University	20 November 2012
		Philippines	University of the Philippines Diliman
		University of the Philippines Manila	4 February 2013
	Bhutan	Royal University of Bhutan	14 June 2012
	Vietnam	Hanoi University of Science and Technology	2 December 2008
		University of Transport and Communications	3 December 2008
Malaysia	University of Malaya	20 November 2013	
Mongolia	Mongolian University of Science and Technology	22 October 2009	
	Ikh Zasag University	22 July 2010	
	Mongolian State University of Education	23 July 2010	
	Mongolian National University	19 June 2013	
Middle East	Israel	University of Haifa	24 September 2010
Africa	Botswana	Botswana International University of Science and Technology	23 October 2009
		University of Botswana	31 March 2011
	Kenya	Kenyatta University	2 March 2010
	Mozambique	Eduardo Mondlane University	12 January 2014
Oceania	Australia	Griffith University	29 June 1994
		Curtin University	1 August 2013
North America	U.S.A.	St. Cloud State University	24 July 1996
		Missouri University of Science and Technology	7 March 2011
	Canada	Memorial University of Newfoundland	17 June 2013
Central/South America	Chile	University of Santiago	21 November 2013
Europe (including NIS countries)	Italy	University of Cagliari	9 December 2009
	Netherlands	University of Twente	23 October 2007
	Kazakhstan	East Kazakhstan State Technical University	8 June 2011
	Sweden	Luleå University of Technology	9 May 2013
	Germany	Freiberg University of Mining and Technology	4 July 2012
	Finland	*Kemi-Tornio University of Applied Sciences (Renamed to Lapland University of Applied Sciences on 1 January 2013)*	23 October 2009
	Belarus	Belarusian State Medical University	26 July 2004
	Romania	University of Bucharest	28 September 2010

[Inter-Departmental Agreements]

(15 Faculties, etc. in 8 countries/regions)

As of 1 May 2014

Country/Region	University	Affiliate Since		
Venture Business Laboratory				
Asia	China	Shanghai Key Lab of D&A for Metal Functional Materials, Tongji University	2 September 2011	
Graduate School of Medicine				
Asia	China	Beijing Hospital of the Ministry of Health	14 November 1995	
Europe (including NIS countries)	France	Lille University School of Medicine	13 April 2011	
Graduate School of Engineering and Resource Science				
Asia	Thailand	Chiang Mai University Faculty of Engineering	12 July 1999	
		Chiang Mai University Faculty of Science	12 July 1999	
	Taiwan	Minghsin University of Science and Technology College of Engineering	12 April 2010	
	China	Tsinghua University Department of Precision Instruments and Mechanology	1 March 2007	
		Tsinghua University Department of Chemistry	17 January 2008	
		Tongji University School of Materials Science and Engineering	24 May 2010	
		Tongji University Shanghai Key Laboratory of Metal Function Materials Research and Application	24 May 2010	
	Africa	Zambia	University of Zambia School of Mines	20 January 2003
			University of Zambia School of Engineering	12 March 2003
		Tunisia	University of Sfax National Engineering School	18 December 2003
	Oceania	New Zealand	Auckland University of Technology Faculty of Design and Creative Technologies	27 November 2012 (Memorandum exchanged)
	North America	U.S.A.	Montana Tech of the University of Montana School of Mines and Engineering	24 June 1982



Administrator Data

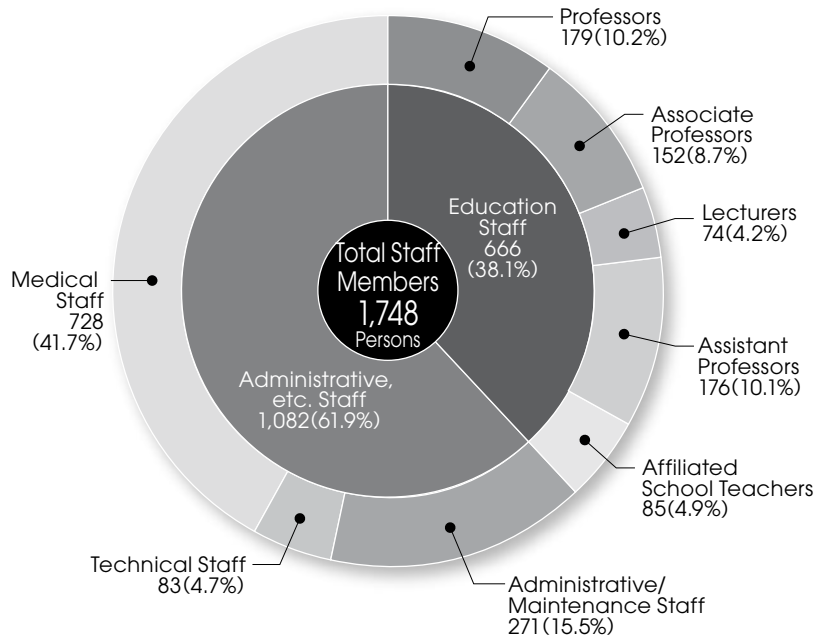
As of 1 May 2014

Category	University President	Director	Temporary	Total
University President	1			1
Director		5 (1)		5 (1)
Temporary			2 (1)	2 (1)
Total	1	5 (1)	2 (1)	8 (2)

*Numbers in () represent part-time administrators as a portion of the total number.

Instructor Data

As of 1 May 2014

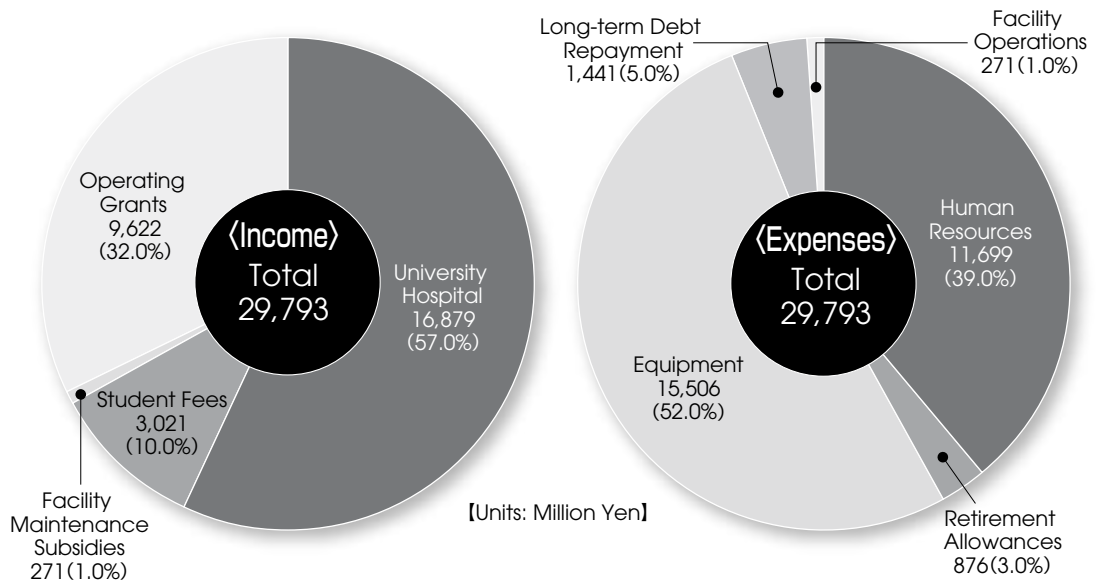


All Staff by Position and Gender

As of 1 May 2014

Sex	Professors		Associate Professors		Lecturers		Assistant Professors		Affiliated School Teachers		Administrative/Maintenance Staff		Technical Staff		Medical Staff	
	#	%	#	%	#	%	#	%	#	%	#	%	#	%	#	%
Male	160	89.4	138	90.8	62	84.9	120	67.8	44	51.8	167	61.6	68	81.9	132	18.1
Female	19	10.6	14	9.2	12	15.1	56	32.2	41	48.2	104	38.4	15	18.1	596	81.9
Total	179		152		74		176		85		271		83		728	

Budget for FY2014



*The values in the graph are projected amounts for FY2014, and Income and Expenses totals do not include joint industry-university research fees or donation-related costs.

Units: JPY 1000

Accepted External Funding Status

Category	FY2008		FY2009		FY2010		FY2011		FY2012		FY2013	
	Donations	Amount	Donations	Amount	Donations	Amount	Donations	Amount	Donations	Amount	Donations	Amount
Collaborative Research with Private Sector, etc.	59	77,934	59	58,659	56	75,131	62	59,464	71	64,480	78	77,127
Contracted Research	73	276,786	86	312,251	84	371,986	110	273,757	131	344,289	123	279,478
Scholarship Donations	830	485,359	794	515,847	801	643,222	769	816,153	705	423,299	738	457,548
Charitable Lectures/Departments	2	38,300	3	75,800	5	216,800	6	222,600	6	226,800	6	204,000
Total	964	878,379	942	962,557	946	1,307,139	947	1,371,974	913	1,058,868	945	1,018,153

*Contracted Research does not include investigational drug trials, histopathological exams, or contracted trials. Scholarship Donations does not include Akita University Education Research Support Fund.

Telephone Numbers and Addresses

<Tegata Campus>

Name	Telephone Number	Address
General Affairs Front Desk (General Information)	018-889-2207	1-1 Tegata Gakuen-machi, Akita City 010-8502 Japan
Center for Evaluation	018-889-2937	
University Library - Central Library	018-889-2273	
University Health Center	018-889-2286	
Cooperative Research Center	018-889-2712	
General Information Processing Center	018-889-2499	
Venture Business Laboratory	018-889-3040	
International Center for Research and Education on Mineral and Energy Resources	018-889-2810	
Radioisotope Research Center	018-889-3006	
Venture Incubation Center	018-889-2680	
International Exchange Center	018-889-2856	
Center for Promotion of Educational Research and Affairs	018-889-3191	
Center for Teaching License Extension	018-889-3205	
Center for Regional Development	018-889-2270	
Student Support Center	018-889-2265	
Office for the Promotion of Gender Equality	018-889-2260	
Information Center	018-889-2931	
Faculty of International Resource Sciences - Front Desk	018-889-2214	
Faculty of International Resource Sciences - Mining Museum	018-889-2461	
Faculty of Education and Human Studies - Front Desk	018-889-2509	1-1 Tegata Gakuen-machi, Akita City 010-8502 Japan
Faculty of Education and Human Studies - Center for Educational Research and Practice	018-889-2700	
Faculty of Engineering Science - Front Desk	018-889-2305	
Faculty of Engineering Science - Research Center for Engineering Science	018-889-2460	
Faculty of Engineering Science - Innovation Center for Engineering Design and Manufacturing	018-889-2806	
Faculty of Engineering Science - Research Center for Development of Disaster Prevention	018-889-2305	



Tegata Campus

<Hondo Campus>

Name	Telephone Number	Address
Faculty of Medicine (General Information)	018-833-1166	1-1-1 Hondo, Akita City 010-8543 Japan
Faculty of Medicine - University Hospital (General Information)	018-834-1111	
Faculty of Medicine - University Hospital Medical Simulation Center	018-884-6427	
Bioscience Education and Research Center Department of Molecular Medicine	018-884-6191	
Bioscience Education and Research Center Animal Center	018-884-6193	
Bioscience Education and Research Center Radioisotope Laboratory	018-884-6196	
Research Center for Biosignal	018-884-6467	
Environmental Research Center	018-884-6192	
University Library - Medical Library	018-884-6052	



Hondo Campus

<Hodono Campus>

Name	Telephone Number	Address
Faculty of Education and Human Studies Kindergarten	018-862-2343	14-32 Hodonoharano-machi, Akita City 010-0904 Japan
Faculty of Education and Human Studies Elementary School	018-862-2593	13-1 Hodonoharano-machi, Akita City 010-0904 Japan
Faculty of Education and Human Studies Junior High School	018-862-3350	7-75 Hodonoharano-machi, Akita City 010-0904 Japan
Faculty of Education and Human Studies Special Support School	018-862-8583	

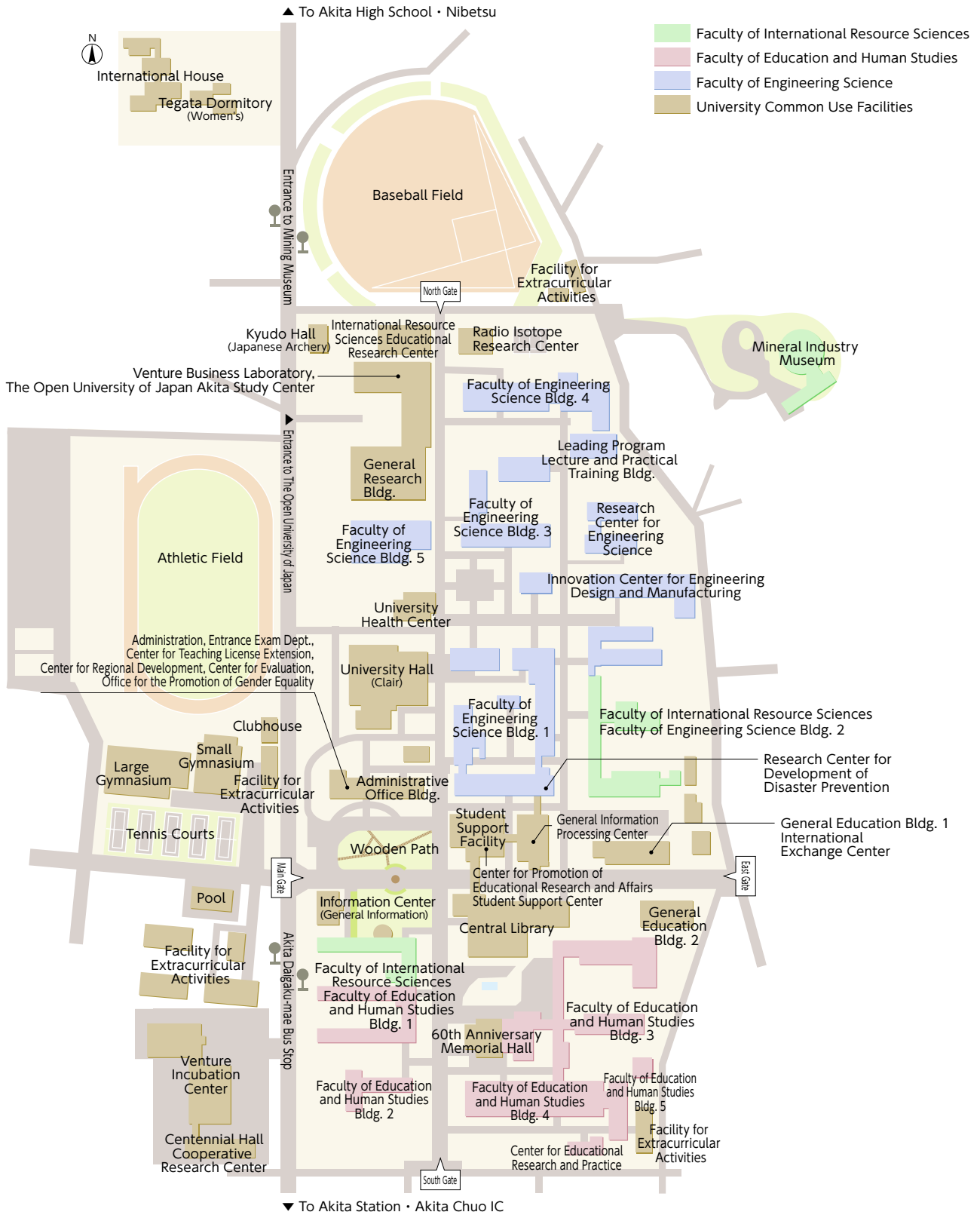


Hodono Campus

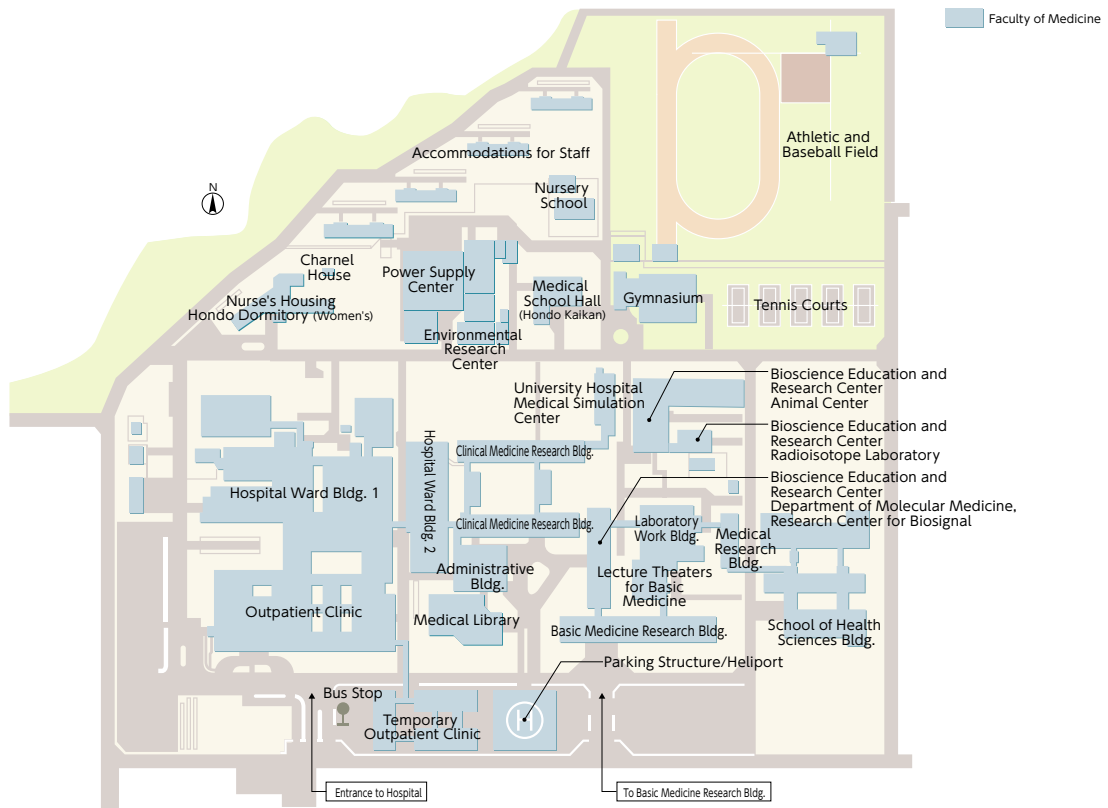
<Other Facilities>

Name	Telephone Number	Address
Nishiyachi Dormitory (Men's)	018-833-2856	5-1 Tegata Nishiyachi, Akita City 010-0851 Japan
Tegata Dormitory (Women's)	-	5-50 Tegata Tanaka, Akita City 010-0862 Japan
Hondo Dormitory (Women's)	-	100-3 Nukazuka Yanagida, Akita City 010-0825 Japan
International House	-	5-50 Tegata Tanaka, Akita City 010-0862 Japan
International Student House	-	4 Takada Hiroomote, Akita City 010-0041 Japan
Nyuto Lodge	0187-46-2110	2-228 Komagatake Tazawako Obonai, Senboku City 014-1201 Japan
Yokote Branch School	0182-38-8304	1-21 Ekimae-cho, Yokote City 013-0036 Japan
Kitaakita Branch School	0186-62-1111	19-1 Hanazono-cho, Kitaakita City 018-3392 Japan
Oga Namahage Branch School	0185-24-9126	66-1 Izumidai Funagawaminato Funagawa, Oga City 010-0595 Japan
Tokyo Satellite Campus	03-5440-9104	3-3-6 Shibaura, Minato-ku, Tokyo 108-0023 Japan Tokyo Institute of Technology Campus Innovation Center Rm. 606
The Open University of Japan Akita Study Center	018-831-1997	1-1 Tegata Gakuen-machi, Akita City 010-8502 Japan

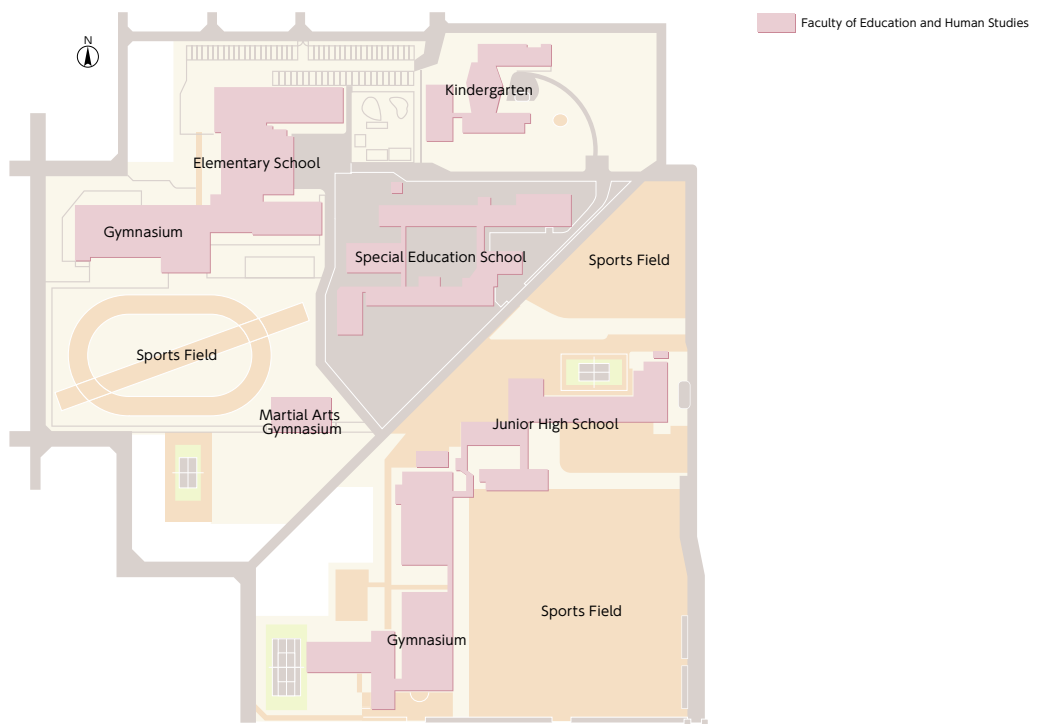
Tegata Campus Map



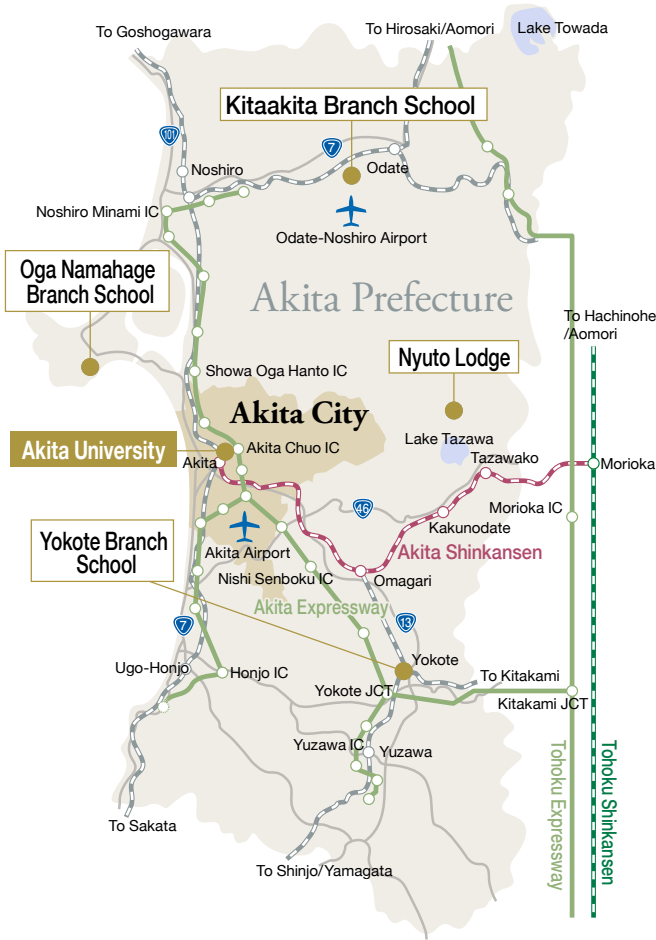
Hondo Campus Map



Hodono Campus Map



Access



<To Akita>

As of April 2014

From Tokyo	Haneda Airport to Akita Airport (1 hr. 5 min.)
	Haneda Airport to Akita Airport (1 hr. 5 min.)
From Nagoya	Chubu International Airport to Akita Airport (Approx. 1 hr. 20 min.)
From Osaka	Osaka International Airport (Itami) to Akita Airport (Approx. 1 hr. 30 min.)
From Sapporo	New Chitose Airport to Akita Airport (Approx. 1 hr. 15 min.)
Airport Bus from Akita Airport to Akita Station	Akita Airport to Akita Station West Gate (Approx. 35 min.)
	Akita Airport to Akita Station East Gate (Approx. 30 min.) *Runs only once/day

<From Akita Station to Akita University>

As of April 2014

Destination	Bus Route (Akita Chuokoutsu)	Akita Station Platform Location	Final Bus Stop (Travel Time)
Tegata Campus	Daigaku Byoin Line via Tegatayama	West Gate ⑫	Akita Daigaku-mae (Approx. 6 min.)
	● Approx. 15 min. on foot from the East Gate of Akita Station		
Hondo Campus	Taihei Line	West Gate ⑪	Daigaku Byoin-mae (Approx. 15 min.)
	Akanuma Line		
	Matsuzaki Danchi Line	West Gate ⑫	
	Daigaku Byoin Line via Tegatayama		
Hodono Campus	Eki Higashi Line	East Gate ①	Haranomachi (Approx. 10 min.)
	Akanuma Line	East Gate ②	
	Kanda Asahino Line	West Gate ⑩	
Kanda Tsuchizaki Line			
	Soegawa Line		



University Calendar

● Academic Year

First Semester

... 1 April - 30 September

Second Semester

... 1 October - 31 March

● Ceremonies

Entrance Ceremony..... 5 April

Graduation Ceremony... 22 March

● School Breaks (2014-2015)

Summer Break

... 9 August - 28 September

Winter Break

... 26 December - 8 January

Spring Break

... 19 February - 3 April

Logo



The four points below describe the meanings embedded in the Akita University Logo:

1. It depicts the "A" in "Akita University".
 2. It resembles the curve of the Akita Prefecture coastline.
 3. It represents the structure of the University, which is comprised of four faculties.
 4. It expresses the contributions, both local and global, made by the University.
-



Akita University

Akita University Outline 2014 Edition

[Editing and Publication]

Akita University Public Relations Office

1-1 Tegata Gakuen-machi, Akita City 010-8502 Japan

TEL: 018-889-3019 FAX: 018-889-2219

E-mail: kouhou@jima.akita-u.ac.jp

<http://www.akita-u.ac.jp>