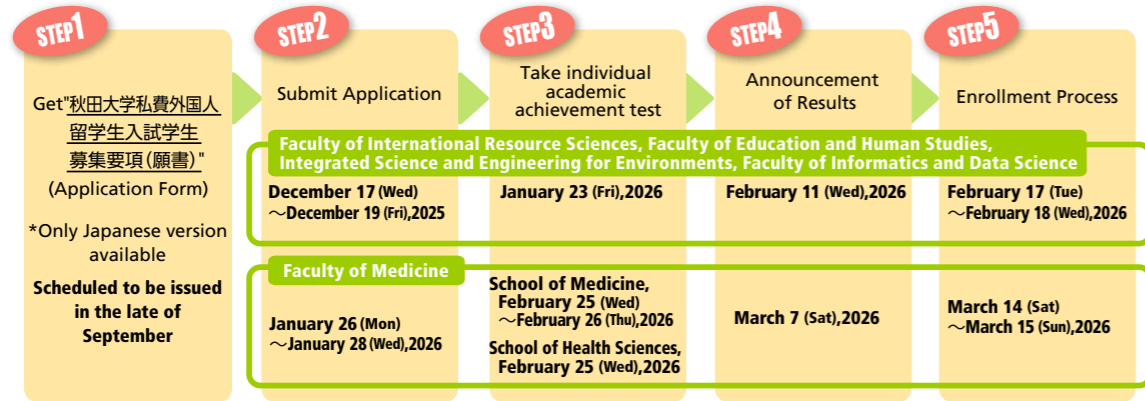


## Undergraduate Application (for self-funded international students)

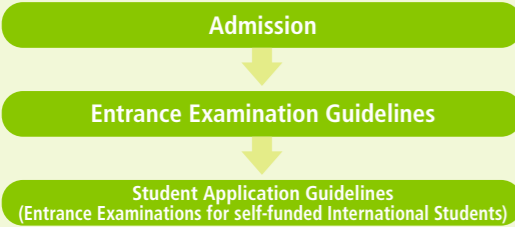
Applicants must take the Examination for Japanese University Admission for International Students conducted by Japan Student Services Organization (JASSO) prior to submitting their application.



## How to request the Application Form ("秋田大学私費外国人留学生入試学生募集要項")

\*Only Japanese version available

Akita University Website for Applicants  
<https://www.akita-u.ac.jp/eng/exam/>

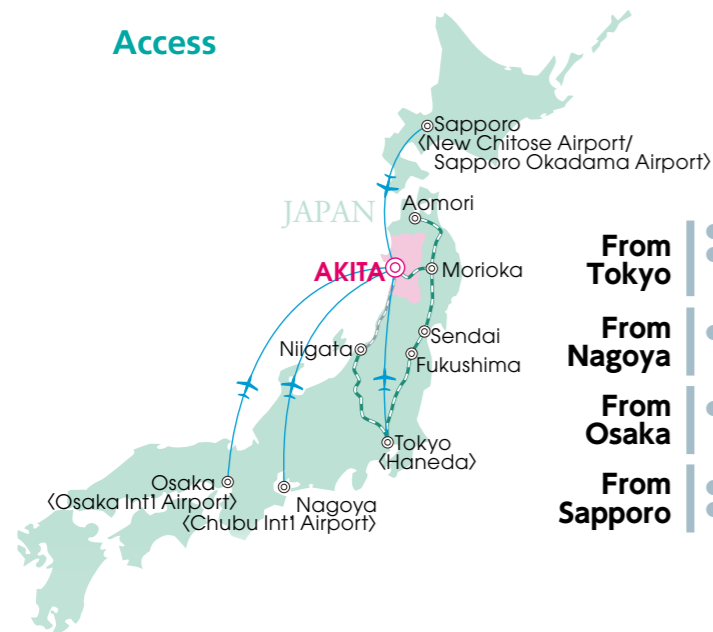


## Graduate School Application

Conditions and schedule for application vary between each graduate school. Please see the websites of each graduate school for information.

- Graduate School of International Resource Sciences : <https://www.akita-u.ac.jp/shigen/graduate/info.html>
- Graduate School of Medicine : <http://www.med.akita-u.ac.jp/department/gs/kenkyu-selection.php>
- Graduate School of Engineering Science : <https://www.riko.akita-u.ac.jp/graduate/prospectus/>

## Access



- From Tokyo**
  - Haneda Airport - Akita Airport (1hr 5mins)
  - JR Tokyo Station - Akita Station (approx. 4hrs by Komachi, Akita Shinkansen)
- From Nagoya**
  - Chubu Int'l Airport - Akita Airport (approx. 1hr 25mins)
- From Osaka**
  - Osaka Int'l Airport (Itami) - Akita Airport (approx. 1hr 20mins)
- From Sapporo**
  - New Chitose Airport - Akita Airport (55mins)
  - Sapporo Okadama Airport - Akita Airport (1hr 5mins)



Akita University Global Center for Higher Education

1-1 Tegatagakuen-machi, Akita City, Akita 010-8502  
TEL+81-18-889-2258 FAX+81-18-889-3012  
E-mail : ryugaku@jimu.akita-u.ac.jp

<https://www.akita-u.ac.jp/honbu/global/en/index.html>



Published in June 2025



# Guide for International Students



Akita University

# Akita University

Akita University is a national university consisting of Faculty of International Resource and Sciences, Faculty of Education and Human studies, Faculty of Medicine, Faculty of Integrated Science and Engineering for Environments, Faculty of Informatics and Data Science and the Graduate Schools. Akita University was established in 1949 from Akita Normal School, Akita Normal School for Youth, and Akita Mining College.

**Student Figures (as of May 1, 2025)** ◆ Students: 5,135 (Undergraduate 4,326, Graduate 809)  
◆ International Students: 253 (Undergraduate 154, Graduate 99)  
\*The figure includes degree seeking international students.

Faculties	Total number admitted	International Students		
		Degree-seeking	Non Degree-seeking	Total
International Resource Sciences	514	30	0	30
Education and Human Studies	875	7	23	30
Medicine	1,214	1	0	1
Integrated Science and Engineering for Environments/Engineering Science	1,616	89	2	91
Informatics and Data Science	107	2	0	2
Total	4,326	129	25	154

Graduate Schools	Total number admitted	International Students		
		Degree-seeking	Non Degree-seeking	Total
International Resource Sciences	156	65	1	66
Education and Human Studies	49	0	0	0
Medicine	230	6	0	6
Engineering Science	353	24	3	27
Advanced Health Care Engineering	21	0	0	0
Total	809	95	4	99

## Overseas Partner Universities (as of May. 1, 2025) Inter-University Agreements

● 80 Universities and Institutions (37 Countries and Regions)

Countries/Regions	Universities	Student Exchange Agreement	Countries/Regions	Universities	Student Exchange Agreement		
India	Indian Institute of Technology Madras	●	Asia	Mongolia	New Mongol Academy	—	
	Vellore Institute of Technology	●			MUST Kosen College of Technology, Mongolian University of Science and Technology	—	
Indonesia	Institut Teknologi Bandung	●	Africa	Kenya	Institute of Engineering and Technology Mongol Kosen College of Technology	—	
	Trisakti University	—			New Mongol College of Technology	—	
	Gadjah Mada University	—			Kenya University	●	
	Universitas Pertamina	●			Botswana International University of Science and Technology	●	
Korea	Padjajaran University	—	South America	Chile	University of Botswana	●	
	Hanbat National University	●			Eduardo Mondlane University	●	
	Wonkwang University	●			Mozambique	Tete Polytechnic Institute for Higher Education	●
Thailand	Kangwon National University	●	Oceania	Australia	Republic of South Africa	The University of the Witwatersrand	—
	Suranaree University of Technology	●			Papua New Guinea	Papua New Guinea University of Technology	—
Taiwan	Chiang Mai University	—	North America	USA	Zambia	University of Zambia	—
	Lunghwa University of Science and Technology	●			Tanzania	University of Dar es Salaam	—
	National Taiwan University	●			Canada	Memorial University of Newfoundland	●
	National Changhua University of Education	●			France	University of Santiago	●
	National Cheng Kung University	●			Belgium	University of Haifa	●
	Chang Jung Christian University	●			Poland	AGH University of Krakow	●
	Heilongjiang University	●			Uzbekistan	University of Geological Sciences of Uzbekistan	—
	Central South University	●			Uzbekistan	Uzbek-Japan Innovation Center of Youth (UJICY)	—
	Liaoning Technical University	●			Uzbekistan	Navoi State University of Mining and Technologies	—
	Dalian Minzu University	●			Tajikistan	Centre of Innovative Development of Science and New Technologies, National Academy of Sciences of Tajikistan	—
China	Lanzhou University	●	North America	Canada	Institut National de la recherche scientifique, Université du Québec	—	
	Jilin University	●	North America	USA	Faculty of Engineering, University of Alberta	—	
	Northeastern University	●	Asia	Korea	Korean Language School of Sungkonghoe University	—	
	Donghua University	●	Asia	China	Beijing Hospital, Ministry of Health	—	
	Huazhong University of Science and Technology	●	Asia	Singapore	Alice Lee Center for Nursing Studies, Yong Loo Lin School of Medicine, National University of Singapore	●	
	Chang'an University	●	Asia	Thailand	School of Nursing Suranaree University of Technology	●	
	Beihua University	●	Asia	Indonesia	Faculty of Medicine, Universitas Islam Nejeri, Syarif Hidayatullah Jakarta	●	
	Jiaxing University	●	Europe	France	The Faculty of Medicine of Lille 2 University	●	
	Northwest Normal University	●	Europe	Belgium	Bachelor in Nursing & Bachelor in Occupational Therapy VIVES University of Applied Sciences	●	
	Philippines	University of the Philippines Diliman	●	Europe	Bosnia and Herzegovina	Faculty of Medicine, University of East Sarajevo	●
University of the Philippines Manila		●	North America	USA	John A. Burns School of Medicine, University of Hawaii	—	
University of the Philippines Los Baños		●	North America	USA	MD Anderson Cancer Center, University of Texas	—	
Hanoi University of Science and Technology		●	Asia	China	The First Hospital of Lanzhou University	—	
University of Transport and Communications		●	Asia	Taiwan	College of Engineering Minghsin University of Science and Technology	●	
Malaysia		University of Malaya	●	Asia	Department of Precision Instruments and Mechatronics, Tsing Hua University	●	
Myanmar		University of Yangon	—	Asia	Department of Chemistry, Tsing Hua University	—	
		Mongolian University of Science and Technology	●	Asia	School of Materials Science and Engineering, Tongji University	●	
Mongolia		Mongolian National University of Education	●	Asia	Shanghai Key Lab of D&A for Metal Functional Materials, Tongji University	●	
				Asia	India	The CSIR-Indian Institute of Chemical Technology	—
		Asia	Malaysia	Malaysia Japan International Institute of Technology, Universiti Teknologi Malaysia	—		
		Asia	Universiti Kebangsaan Malaysia	—			
		Asia	Thailand	Thai-Nichi Institute of Technology	●		
		Asia	Tunisia	Faculty of Technology, University of Sfax	●		
		Asia	New Zealand	Faculty of Design and Creative Technologies, Auckland University of Technology (AUT)	—		
		Asia	Poland	Department of Chemistry, University of Otago	—		
		Asia	Hungary	Montana College of Mineral Science and Technology	—		
		Asia	Czech	Faculty of Informatics, University of Debrecen	—		
		Asia	Slovakia	Faculty of Information Technology, Brno University of Technology	●		
		Asia	Great Britain	Faculty of Mathematics, Physics and Informatics, Comenius University	—		
		Asia	Poland	Faculty of Engineering Science, Aston University	●		
		Asia	China	The AGH University of Krakow	●		
		Asia	China	Shanghai Key Lab of D&A for Metal Functional Materials, Tongji University	—		

## Inter-Faculty Agreements

● 46 Faculties (25 Countries and Regions)

Faculties	Countries/Regions	Faculties, Universities	Student Exchange Agreement				
Graduate School of International Resource Sciences	Asia	Indonesia	Faculty of Engineering, Hasanuddin University	—			
		Indonesia	Faculty of Geological Engineering, Universitas Padjadjaran	●			
	Thailand	Faculty of Mineral Technology Universitas Pembangunan Nasional "Veteran" Yogyakarta	—				
	Mongolia	Research Center for Geological Resources, Research Organization for Earth Sciences and Maritime, National Research and Innovation Agency	—				
	Europe (including NIS countries)	Serbia	Faculty of Science, Kasesart University	—			
			Technical Faculty in Bor, University of Belgrade	—			
	North America	Canada	Uzbek-Japan Innovation Center of Youth (UJICY)	—			
			Faculty of Engineering, University of Alberta	—			
	Faculty of Education and Human Studies	Asia	Kazakhstan	K.I. Satbayev Kazakh National Research Technical University	—		
			China	Beijing Hospital, Ministry of Health	—		
Europe		France	Singapore	Alice Lee Center for Nursing Studies, Yong Loo Lin School of Medicine, National University of Singapore	●		
			Belgium	Bachelor in Nursing & Bachelor in Occupational Therapy VIVES University of Applied Sciences	●		
North America		USA	Thailand	School of Nursing Suranaree University of Technology	●		
			USA	John A. Burns School of Medicine, University of Hawaii	—		
Graduate School of Medicine		Asia	China	Indonesia	Faculty of Medicine, Universitas Islam Nejeri, Syarif Hidayatullah Jakarta	●	
				China	The First Hospital of Lanzhou University	—	
		Europe	France	France	The Faculty of Medicine of Lille 2 University	●	
				Belgium	Bachelor in Nursing & Bachelor in Occupational Therapy VIVES University of Applied Sciences	●	
	North America	USA	Bosnia and Herzegovina	Faculty of Medicine, University of East Sarajevo	●		
			USA	MD Anderson Cancer Center, University of Texas	—		
	Akita University Hospital	Asia	China	USA	John A. Burns School of Medicine, University of Hawaii	—	
				China	The First Hospital of Lanzhou University	—	
		Europe	France	France	France	The Faculty of Medicine of Lille 2 University	●
					Belgium	Bachelor in Nursing & Bachelor in Occupational Therapy VIVES University of Applied Sciences	●
North America		USA	USA	USA	John A. Burns School of Medicine, University of Hawaii	—	
				USA	MD Anderson Cancer Center, University of Texas	—	
Graduate School of Engineering Science		Asia	China	China	Department of Precision Instruments and Mechatronics, Tsing Hua University	●	
					China	Department of Chemistry, Tsing Hua University	—
		Europe	France	France	France	The Faculty of Medicine of Lille 2 University	●
					Belgium	Bachelor in Nursing & Bachelor in Occupational Therapy VIVES University of Applied Sciences	●
	North America	USA	USA	USA	John A. Burns School of Medicine, University of Hawaii	—	
				USA	MD Anderson Cancer Center, University of Texas	—	
	Africa	Tunisia	Tunisia	Tunisia	Faculty of Technology, University of Sfax	●	
				New Zealand	Department of Chemistry, University of Otago	—	
	Oceania	New Zealand	New Zealand	New Zealand	Department of Chemistry, University of Otago	—	
				USA	Montana College of Mineral Science and Technology	—	
Europe	Hungary	Hungary	Hungary	Faculty of Informatics, University of Debrecen	—		
			Czech	Faculty of Information Technology, Brno University of Technology	●		
Future Cooperative Research Organization	Asia	China	China	Shanghai Key Lab of D&A for Metal Functional Materials, Tongji University	—		

※Student Exchange based on Inter-Faculty Agreements are vary by faculty.

春 Spring

夏 Summer

# Akita

An abundance of nature and traditional culture changing along with the four seasons.

Akita Prefecture is located in northern Honshu on the Sea of Japan. It offers a rich natural environment including the Shirakami mountain range (a World Heritage site), Lake Tazawa (the deepest lake in Japan), Hachimantai, and Oga Peninsula, where the four seasons can be distinctly experienced and enjoyed. Akita's seasonal festivities include the Sakura (cherry blossom) festivals in spring, Kanto festival (one of the three great Tohoku festivals) in summer, viewing fall foliage in autumn, and a variety snow sports (skiing, snowboarding, etc.) in winter.

The university's campus is located in Akita City with a population of 300,000. It is the capital of Akita Prefecture, and is also the prefecture's political and economic center. It is convenient in terms of transportation and has a lower cost of living than Tokyo. Students find the city a very suitable environment for daily life.



### Kanto Festival

Held every year from August 3 – 6 in Akita City. The largest Kanto Pole is 12 meters in height and weighs approximately 50 kgs. Balancing the giant Kanto using their hands, lower back and forehead, the dancers display their skills while competing with one another. The university also has a kanto team.



### Namahage Event

An ethnic tradition originating from the Oga Peninsula, held on New Year's Eve. Namahage are said to be messengers of the gods.



### Lake Tazawa

Japan's deepest lake, located in the city of Semboku (Maximum depth 423.4 m). It is approximately 1 hour away from the university and it is a great place to enjoy canoeing or rafting.



### Kiritampo

Kiritampo, part of Akita's regional cuisine, is rice that has been mashed and wrapped around a skewer, then toasted and finally cut into easy-to-eat pieces. When it is added to a hot pot with chicken, vegetables, mushrooms, etc. it is called "Kiritampo Nabe" (Kiritampo hot pot).



### Onsen (hot springs)

Akita has many hot springs, the most famous being Nyuto Hot Spring Village and Tamagawa Hot Spring. This photo features the open-air bath at Nyuto Hot Spring Village.

秋 Autumn

冬 Winter



# Undergraduate

\*All tentative names are preliminary and subject to change.

Interview Movies with Undergraduate Students

## Faculty of International Resource Sciences



“Faculty of International Resource Sciences” was established in 2014 with the aim of developing human resources who can play an active role in the field of resources on a global scale, against the backdrop of the resource issues currently facing the world and the progress of economic globalization. Based on the education in natural resources that Akita University has cultivated, we will strengthen our partnerships with universities and companies in Japan and overseas, and provide distinctive education such as specialized education in English, mandatory overseas natural resources fieldwork, and education that integrates the humanities and sciences.

There are three courses : “**Resource Policy and Management**” in which students study resources from the viewpoint of humanities and social sciences, including political science and economics, business and international cooperation with resource-rich countries, and the cultures, histories, and religions of resource-rich regions that form the background of such cooperation; “**Earth Resource Science**” in which students learn about global-scale natural phenomena that produce resources, earth history, materials that make up the earth, and their distribution and exploration; and “**Earth Resource Engineering and Environmental Science**” in which students study specialized fields related to resource development and production technology in harmony with the earth and its environment, recycling and smelting technology, and environmental conservation.

- Department of International Resource Sciences
- Resource Policy and Management
- Earth Resource Science
- Earth Resource Engineering and Environmental Science

## Faculty of Education and Human Studies



The Faculty of Education and Human Studies consists of two departments: the Department of School Education, which prepares future elementary and junior high school teachers, and the Department of Regional Studies and Humanities, which fosters human resources dedicated to regional development. Akita is known for its top-level academic performance in elementary and junior high schools across Japan. At the Department of School Education, students actively engage in hands-on training with cutting-edge teaching methods through partnerships with leading schools. In the Department of Regional Studies and Humanities, students explore a wide range of disciplines in the social and human sciences, while also gaining practical experience through community-based classes and fieldwork. The department also offers courses in psychology, which can lead to professional certification.

- Department of School Education
  - Course for Elementary and Secondary Education (Program: Compulsory School Teachers, English Language Teachers, Science and Mathematics Teachers)
  - Course for Special Needs Education Teachers
  - Course for Child Development and Education
- Department of Regional Studies and Humanities
  - Program in Regional Studies
  - Program in International Culture Studies
  - Program in Psychological Studies

## Faculty of Medicine



The Faculty of Medicine fosters a richly educated humanity, flexible adaptability and problem-solving skills to respond to academic advances, and an international outlook to contribute to the health and well-being of people based on a thorough understanding of medicine and health sciences. In addition to working as a medical professional in a clinical setting, students also have the option of entering graduate school to become advanced professionals in medical care, including researchers and educators.

- School of Medicine
- School of Health Sciences
  - Nursing Course
  - Physical Therapy Course
  - Occupational Therapy Course

Interview with Engineering Science students ↓

## Faculty of Integrated Science and Engineering for Environments



This faculty promotes education and research in response to the latest science and environmental technology by strengthening education related to the realization of a green society through comprehensive study of science and technology. Also cross-sectional education is strengthened to develop specialist knowledge and skills in science and technology, as well as the ability to co-create with others with different specializations. The Faculty consists of the following three departments (8 courses).

- Department of Applied Chemistry and Bioscience
  - Course of Bioscience
  - Course of Organic and Polymer Chemistry
  - Course of Applied Chemistry
- Department of Mathematical and Physical Science for Environments
  - Course of Mathematical and Earth Environmental Science
  - Course of Functional Devices and Materials Science
- Department of Engineering for Social Systems
  - Course of Mobility Engineering
  - Course of Electrical Systems Engineering
  - Course of Civil and Environmental Engineering

## Faculty of Informatics and Data Science

In April 2025, the Faculty of Informatics and Data Science was established to provide a structured education in informatics and data science. Students gain advanced knowledge in information technology and develop the ability to analyze big data, equipping them to become digital professionals who can solve complex societal issues and create new value in the digital age.

- Department of Informatics and Data Science

# Graduate

## Graduate School of International Resource Sciences

The Graduate School of International Resource Sciences aims to study global resource problems and stimulate critical and creative thinking to develop strategies to help solve problems of energy and resource development, production and distribution. We strongly encourage international students to apply for this program. All lectures are conducted in English, and research activities mainly consist of discussions in English. Degree completion in English is possible.

- Master's Degree Program
  - Earth Resource Science
  - Earth Resource Engineering and Environmental Science
- Doctoral Degree Program
  - Geosciences, Geotechnology, and Materials Engineering for Resources

## Graduate School of Medicine

The Graduate School of Medicine aims to train excellent researchers and highly specialized medical staff who possess an international perspective, and who can promote the most advanced research in medicine, medical, and life sciences, all of which contribute to the development of human health and welfare.

- Master's Degree Program
  - Medical Science
  - Health Sciences
  - Nursing Science
  - Rehabilitation Science
- Doctoral Degree Program
  - Medicine
  - Health Sciences
  - Women and Children's Development Support Sciences
  - Lifestyle Function and Health Support

## Graduate School of Engineering Science

The Graduate School of Engineering Science aims to nurture human resources who can systematically acquire advanced specialized knowledge and skills on a fundamental basis, and who can contribute to regional development and the sustainable growth of Japan based on a flexible approach, international perspective and solid ethics.

- Master's Degree Program
    - Life Science
    - Materials Science
    - Mathematical Science and Electrical-Electronic-Computer Engineering
    - Systems Design Engineering
    - Cooperative Major in Sustainable Engineering
  - Doctoral Degree Program
    - Integrated Engineering Science
- The Doctoral Degree Program provides a separate English course in which the entire curriculum is conducted in English.

## Graduate School of Advanced Healthcare Engineering

The Graduate School of Medicine, the Graduate School of Engineering Science and the “Advanced Research Center for Geriatric Gerontology, Akita University (ARGG)” will collaborate to establish an educational curriculum that covers health care in daily life, medical diagnosis, treatment, and prognosis for people living in super-aging societies. The purpose of this program is to contribute to a vibrant super-aging society by solving problems that arise in the field through the use of ICT and data science, and to develop human resources who can disseminate the results of their research on new devices and systems to the world.

- Master's Degree Program
  - Engineering

# Admissions

## 1. Self-funded International Students

Category	Purpose	Notes	Application
Undergraduate Students	Degree Seeking (Bachelor)	Must earn required credits and be enrolled at the University for minimum of 4 years (6 years for medical students).	See the attached "Selection Criteria for Self-funded International Students"
Graduate Students	Degree Seeking (Master/Doctorate)	Take required courses, pass final exams, and pass thesis review. <b>Master's Degree</b> Required to be enrolled in one of the following programs for a minimum of 2 years: Graduate School of International Resource Sciences Program Graduate School of Medicine Program, Graduate School of Engineering Science Program, Graduate School of Advanced Healthcare Engineering Program.	See Graduate Schools' Websites
		<b>Doctoral Degree</b> Health Sciences: 3 years minimum enrollment. Medicine: 4 years minimum enrollment. International Resource Sciences, Engineering Science: 3 years minimum enrollment.	
<b>Exchange Students</b> Short-term Exchange Students (Undergraduate, Graduate) Short-term Research Students (Graduate)	Non-degree Seeking	Only available for students enrolled in our partner universities with international student exchange agreements. Required to attend programs for 1 semester or 2 semesters. <b>Undergraduate</b> Credits and transcript of results issued. * Course requirements for completion: 8 classes or more per week (1 class = 90 minutes) and credits <b>Graduate</b> Certificate of course completion issued.	About 5 months before the start of the program Applicants for April admission: around November Applicants for October admission: around May *Refer to the website for international exchange for details.
Non-degree Study Students	Non-degree Seeking	Required to attend regular courses and obtain required grades. * Minimum enrollment of 10hours per week is required for obtaining a student visa. (However, excluding Faculty of Education and Human Studies)	Inquire directly to each Faculty and Graduate School
Research Students	Preparing for Graduate School	Required to be engaged in research of specific themes under the supervision of an approved advisor.	

## 2. Japanese Government Sponsored International Students

\*See the Ministry of Education, Culture, Sports, Science and Technology website for more information.

Category	Purpose	Notes	Application
Undergraduate Students	Degree Seeking (Bachelor)	Same as "1. Self-funded Undergraduate Students" (above).	Embassy recommendation (apply through overseas Japanese diplomatic office) or University recommendation (consult with your university or graduating university) necessary.
Graduate Students (Research Students)	Degree Seeking (Master/Doctorate)	Same as "1. Self-funded Graduate Students" (above).	
	Non-degree seeking	Same as "1. Self-funded Research Students" (above).	
Japanese Studies Students, "Nikken-sei"	Non-degree Seeking	Complete a 1-year program to improve Japanese language skills and understanding of Japan and its culture.	Embassy recommendation necessary. (apply through overseas Japanese embassies or consulates)
Teacher Training Students, "Kyoken-sei"	Non-degree Seeking	Only applicable for in-service teachers or teachers currently undergoing teacher training in their home country. Taking a Japanese language course is compulsory and students must be able to research under supervision in Japanese.	

\*Sufficient Japanese language proficiency is necessary to study at Akita University as most lectures and programs are provided in Japanese.

# Financial Support

## (1) Deferral of university fees (for privately financed international students)

This is a system that allows students who meet specific eligibility criteria to defer payment of the entrance fee. Applications must be submitted by the students themselves before enrollment.

For details, see "University Fees/Living Expenses/Scholarships" ([https://www.akita-u.ac.jp/honbu/life/li\\_lifesupport.html](https://www.akita-u.ac.jp/honbu/life/li_lifesupport.html)) or "Akita University Entrance Examination Guidelines for Privately Financed International Students" (to be announced in mid-September) on the Akita University website.

## (2) Scholarship \*Scholarships are awarded competitively to students after a review process.

### a) International Student Scholarship Program

Program for self-funded international students (excluding exchange students) provided through Japan Student Services Organization (JASSO)

### b) Privately Financed Scholarships

Various scholarship programs for self-funded international students (excluding exchange students)

# Employment Support for International Students

At Akita University, many international students have found employment at Japanese companies. The Employment Promotion Section of the Student Support Center supports international students who wish to find employment in Japan, so please feel free to contact us if you have any concerns or concerns.

### <Example of employment support>

- Holding employment guidance for international student
- Receiving employment consultations (resume correction and interview practice are also available)
- Information about employment events for international students held on and off campus, such as joint company information sessions

### <Student voice>

When I first started looking for a job, I was hesitant about interviewing because I was worried about writing Japanese. However, the staff in charge of employment promotion corrected my entry sheet and helped me practice interviews. Also, he enthusiastically answered my questions. It gave me a lot of confidence and helped me find the right job.

# Student Exchange Programs

Only available for international students enrolled in partner universities with an Agreement on Student Exchange.

## 1 AUAJ (Akita University Academic Japanese Program)

In principle, this is a program for students who have majored in Japanese Language or Japanese Language Education, and have a Japanese language proficiency greater than or equivalent to the Japanese-Language Proficiency Test (JLPT) level N2. The program aims to provide students with advanced Japanese language skills, expertise, and motivation for various academic activities.

Program Length: 2 semesters (Apr. to Feb. or Oct. to Aug.)

## 2 AUSF (Akita University Program for Creating a Sustainable Future)

In addition to taking Japanese language and specialized subjects, students participate in local events and exchange activities with community residents. The program aims to plan and implement projects that contribute to regional revitalization, in cooperation with Japanese students and local residents.

Program Length: 1 semester or 2 semesters (starts in Apr. or Oct.)

## 3 AUGP (Akita University General Program)

This program is intended for students who wish to study abroad in a format different from AUAJ or AUSF. Students can choose to study for 1 or 2 semesters and customize the subjects they take.

Program Length: 1 semester or 2 semesters (starts in Apr. or Oct.)

# Facilities



**Cafeteria**  
Providing affordable and good quality meals.



**Library**  
Ample study space.



**Convenience Store**  
Light meals such as bentos and drinks are available here.



**Multicultural Lounge**  
International students are free to use this space. It's open on weekdays from 8:30 a.m. until 5:00 p.m.



**Book Store**  
You can purchase textbooks, other books or stationery items here.



**International Affairs Division**  
General advice and guidance are provided for international students. If you ever need some assistance, please come in for a consultation any time.

**Health Center**  
Staffed with doctors, nurses and counselors.

# Campus Life



## Orientation for International Students

The orientation provides information on administrative procedures at the city hall, and important tips for daily life in Japan. In addition, a campus tour is provided to introduce you to various facilities.



August : Kanto Festival



### Support system during study abroad

#### Supervisor in charge

All international students will be assigned a supervisor. We provide guidance and advice regarding studies, further education, and daily life.

#### Tutor system

You will be supported by students called tutors who will help you study at university and live your daily life without any inconvenience.

#### (Support example)

- Guidance on your Japanese language
- Support for class preparation and review
- Research guidance advice
- Accompaniment to city hall etc. for various procedures
- Shopping for daily necessities

3 MARCH

2 FEBRUARY

1 JANUARY

12 DECEMBER

11 NOVEMBER

10 OCTOBER

9 SEPTEMBER

8 AUGUST

7 JULY

6 JUNE

5 MAY

4 APRIL

There are so many fun events!

## Orientation for International Students Entrance ceremony

First semester classes (April to August)

## Graduation ceremony

## Orientation for International Students

Second semester classes (October to February)

## Graduation ceremony

### Skiing tour

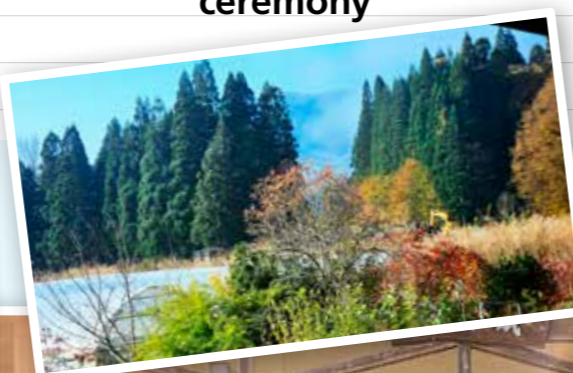
Skiing tour for international and Japanese students. Instructors will help participants who do not have experience.



February : Skiing Tour

### Farmstay tour

In this event, participants experience farming activities and homestay at the local farmer's houses.



October : Farmstay tour



### (1) Tuition (AY2025 enrolled students)

Category	Tuition Fee	Admission Fee	Examination Fee
Undergraduate Students	¥535,800 per year *	¥282,000	¥17,000
Graduate Students	¥535,800 per year *	¥282,000	¥30,000
Short-term Exchange Students Short-term Research Students	Fees are waived based upon the "Agreement on Student Exchange" between Akita University and the partner universities.		
Non-degree Study Students	¥14,800 per credit	¥28,200	¥9,800
Research Students	¥29,700 per month	¥84,600	¥9,800

\*Annual tuition fee to be paid in two payments (one for each semester).

\*Government Sponsored International Students are waived from tuition/admission/examination fees.

# Accommodation

Movies of Look around facilities



English Sub



Chinese Sub

## 1. Dormitory House for International Students

### 1 International House "A" and "B"

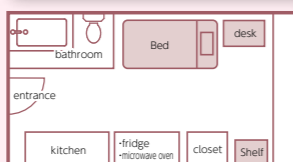
5-minute walk to the University



Boarding fee	(House A) Single occupancy rooms: ¥5,900/month
	(House B) Single occupancy rooms: ¥15,000/month <small>*water, electricity and other, living expenses not included</small>
Maximum period of residence	1 year

### 2 International Student House

15-minute walk to the University



Boarding fee	Single occupancy rooms: ¥5,900/month <small>*water, electricity and other, living expenses not included</small>
	Maximum period of residence

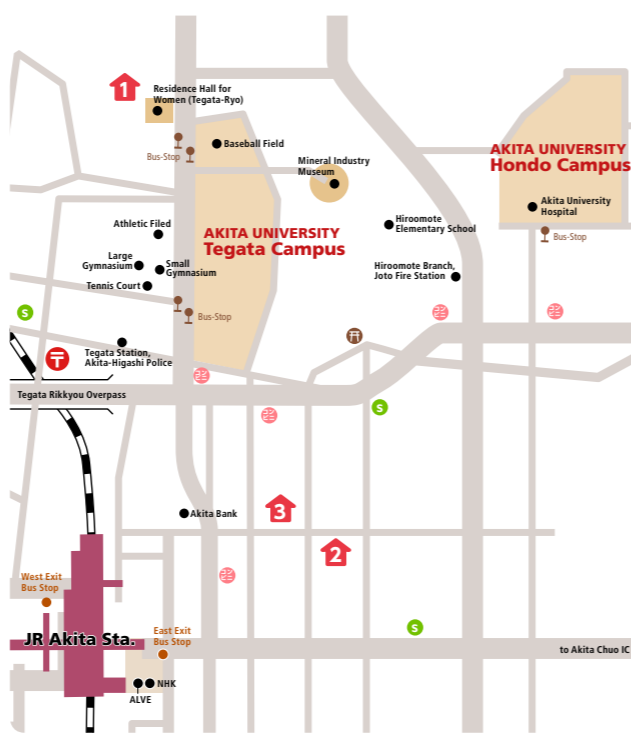
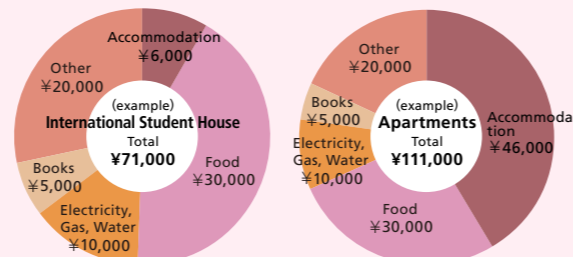
### 3 Nishiyachi Men's Dormitory

15-minute walk to the University



Dormitory house for both Japanese and international students. It is available until graduation. Boarding fee is ¥20,000/month.

### Rough indication of monthly living expenses



Convenience store Supermarket Postal Office

**Students' Voice**  
I am satisfied by daily life in the International House, because there are all facilities for a comfortable student's life. It is clean, new and the location is very convenient. Moreover, I can use a big lounge for teatime with my friends.

International Student House Rent is inexpensive and the location is very good. There are lots of supermarkets around the dormitory and it is very convenient.

## 2. Private Apartments

Apartments are usually found through Akita University Co-op or local real estate agents. Rent varies depending on the area or age of the apartment but is generally approximately ¥30,000/month for a 6-jo studio apartment with a kitchen and bathroom. (1-jo = 180cm×90cm)

\*2 or 3 months' rent as a deposit and / or "key money" may be required up front for signing a rental contract.

# Message from Students



### TUVSHINBAYAR KHUSLEN (Mongolia)

Faculty of Engineering Science  
Department of Material Science  
Applied Chemistry Course

Enrolling at Akita University has brought me closer to my dreams. It's been a journey filled with growth, both academically and personally. My life has been filled with joys and learning experiences, as well as meeting new friends at Akita University.

Among the many programs and events organized by Akita University, I had the opportunity to see a Japanese geisha dance and experience life in a local farmhouse. From there, I learned about Japanese life and gained a deeper understanding of Japanese culture. Akita University is

a place that offers such programs and provides opportunities for cross-cultural exchange.

My seniors and friends are kind and support me even when I have problems. In addition, the library and specialized bookstores offer a wide variety of books, allowing me to find and study books that match my interests and make my time here very fulfilling. And the water in Akita is clean, and the rice and food are delicious. You can enjoy "Akita food" while you are in Akita. There are many opportunities to experience the natural beauty of Akita, such as visiting Lake Tazawa, the deepest lake in Japan, in the summer and "Yunomata Falls" in the fall.

While studying at Akita University, I have experienced a lot and developed myself. I hope that you will also enjoy yourself while learning a lot at Akita University in the future.



### VICHITBANCHONGDEE ANUPAT (Thailand)

Graduate School of International Resource Sciences  
Earth Resource Science

One of my dreams is to study abroad to broaden my perspectives and opportunities, and Japan has been my ideal destination since I was a child. After careful consideration, I decided to study and start a new life at Akita University because of the research opportunities and cultural diversity.

Akita University is one of the perfect places for those who desire to immerse themselves in Japanese culture while wishing to exchange with international students from across the world at the same time. Various styles of exchange activities enable all students, regardless of race and personality, to meet and enjoy these activities together, both

on-campus and outside the university, at their preferences. All the staff are generous, so I feel comfortable asking them for any support.

Apart from campus life, Akita City is neither too crowded nor quiet, so you can live calmly while being able to reach basic facilities and leisure. Moreover, Akita's enchanting nature and attractions are the key things that attract me to experience and relax outside the classroom in all four seasons.

One important thing for having a peaceful life here is adapting to different cultures. Not only the faculty and laboratory you are in but also the society outside the campus. For foreigners in Japan, learning the Japanese language, culture, and unique system is really tough. But once you can cope with this difficulty better, you will grow from the inside and can enjoy the fascinating uniqueness of Akita.

# Selection Criteria for Self-funded International Students

## 1. Qualifications

◆ Applicants who meet criteria (1) to (4) may apply for the Faculty of International Resource Sciences, the Faculty of Education and Human Studies, the School of Health Sciences, (Faculty of Medicine), Faculty of Integrated Science and Engineering for Environments or Faculty of Informatics and Data Science.

◆ Applicants who meet criteria (1) to (5) may apply for the School of Medicine, (Faculty of Medicine).

(1) Those who do not have Japanese nationality. (\*)

(2) Those who meet one of the following criteria:

i) Those who have completed, or will complete by March 31, 2026, 12 years of formal education overseas; or have been approved by the Japanese Minister of Education, Culture, Sports, Science and Technology as having an equivalent educational qualification.

ii) Those who have an International Baccalaureate degree administered by the Secretariat of the International Baccalaureate, a non-profit organization established in accordance with Swiss civil law.

iii) Those who have an Abitur degree, an admission to university in the states of the Federal Republic of Germany.

iv) Those who have a baccalaureate degree, which is an admission to university in the French Republic.

v) Those who have qualified for GCEA in the United Kingdom of Great Britain and Northern Ireland.

vi) Those who have completed (or are expecting to complete) a 12-year course in an educational facility accredited by WASC or ACSJ in the United States of America, or CIS in the United Kingdom of Great Britain and Northern Ireland, by March 31, 2026.

vii) Those who have been approved as having an education level equivalent to completing high school, based on results of the individual academic achievement test conducted by Akita University, and will be at least 18 years old by March 31, 2026. (\*\*)

(3) Those who took the 2025 Examination for Japanese University Admission for International Students (EJU) conducted by the Japan Student Services Organization (JASSO). The subjects to be taken shall be designated by Akita University.

(4) Those who obtain or are able to obtain a resident status as "Student" in accordance with the Immigration Control and Refugee Recognition Act. (\*\*\*)

(5) Those who achieve 90% or more (out of 400 points) in reading comprehension, listening comprehension and listening/reading comprehension in Japanese language as well as achieve 80% or more (out of 400 points) in Mathematics and two subjects from Science (EJU subject) (School of Medicine applicants only.)

\* Non-Japanese applicants who graduated high school in Japan (including senior grade course at schools for secondary education), or have any degrees equivalent to this level, or who have a Japanese permanent visa, are required to apply for the general entrance selection and not for self-funded international student selection.

\*\* The application for the individual academic achievement test must be received by November 28 (Fri), 2025.

\*\*\* Applicants who do have a resident status except "Student" must change the status to "Student" as soon as they complete enrollment procedure.

## 2. Selection of applicants

Judgments of acceptance for all applicants shall be determined based on comprehensive evaluation of the individual academic achievement test conducted by Akita University, the 2025 Examination for Japanese University Admission for International Students to be taken in June or November. (Also, the score of TOEIC L&R, TOEFL iBT or IELTS taken after January 2024 will be included for the evaluation of the applicants for "Faculty of International resource Sciences".)

## 3. Subjects to be taken in the individual academic achievement test and other examinations

Faculty	Department/Program/Major/Course		Subjects in Individual Academic Achievement Test	Required Subjects for Examination for Japanese University Admission for International Students					Others	
				Japanese	Japan and the World	Mathematics	Science	Test Language		
Faculty of International Resource Sciences	Department of International Resource Sciences	Resource Policy and Management	Interview (in Japanese or English, Online)	×	●	(Free choice)	×	Free choice	○ ※	
		Earth Resource Science	Interview (in Japanese or English, Online)	×	×	(Course 2)	(Physics, Chemistry)	Free choice		
		Earth Resource Engineering and Environmental Science	Interview (in Japanese or English, Online)	×	×	(Course 2)	(Physics, Chemistry)	Free choice		
Faculty of Education and Human Studies	Department of School Education	Course for Elementary and Secondary Education	General type	"Practical Examination (1 subject must be selected from Music, Art or PE) and Interview" or "Short Essay and Interview"	●	●	×	×	Japanese	—
			English type	Interview (in English and Japanese)	●	●	×	×	Japanese	
		Science and Math type	Interview (including an examination on mathematics and science)	●	×	(Course 2)	(Optional 2 subject)	Japanese		
		Special Needs Education Teachers	Short essay and interview	●	●	×	×	Japanese		
		Child Development and Education	Short essay and interview	●	●	(Free choice)	×	Japanese		
	Department of Regional Studies and Humanities	Short essay and interview	●	▲	(Free choice) Select 1 subject	(Optional 2 subject)	Japanese			
Faculty of Medicine	School of Medicine		Mathematics, English, Interview	●	×	(Course 2)	(Optional 2 subject)	Free choice	—	
	School of Health Sciences	Nursing Physical Therapy Occupational Therapy	English, Interview	●	×	(Free choice)	(Optional 2 subject)	Free choice		
Faculty of Integrated Science and Engineering for Environments	Department of Applied Chemistry and Bioscience	Course of Bioscience	Interview (including basic oral examination on a subject selected by the applicant from physics, chemistry or biology)	●	×	(Course 2)	(Optional 2 subject)	Free Choice	—	
		Course of Organic and Polymer Chemistry								
		Course of Applied Chemistry								
	Department of Mathematical and Physical Science for Environments	Course of Mathematical and Earth Environmental Science	Interview (including an oral examination on basic mathematics)	●	×	(Course 2)	(Physics, Chemistry)			
		Course of Functional Devices and Materials Science	Interview (including an oral examination on basic physics)	●	×	(Course 2)	(Physics, Chemistry)			
	Department of Engineering for Social Systems	Course of Mobility Engineering	Interview (including an oral examination on basic mathematics and physics)	●	×	(Course 2)	(Physics, Chemistry)			
		Course of Electrical Systems Engineering	Interview (including an oral examination on basic mathematics and physics)	●	×	(Course 2)	(Physics, Chemistry)			
Course of Civil and Environmental Engineering	Interview (including an oral examination on basic mathematics and physics)	●	×	(Course 2)	(Physics, Chemistry)					
Faculty of Informatics and Data Science	Department of Informatics and Data Science		Interview (including an oral examination on knowledge of the mathematical field)	●	×	(Course 2)	(Physics, Chemistry)	Free Choice	—	

Note 1: ●: Subjects to take; ×: Subjects not to take; ▲: Optional subjects.

Note 2: The Common Test for University Admissions is not required for the selection of self-funded international students at Akita University.

Note 3: The interview for "Faculty of International resource Sciences" can be conducted in either English or Japanese.

Note 4: Contact information for the Examination for Japanese University Admission for International Students:

**EJU Uketsuke-Center (EJU Information Desk)**

Address : 7F HI Yokohama Bldg., 2-6-26, Kitasaiwai, Nishi-ku., Yokohama-shi, Kanagawa 220-0004

TEL:0570-55-0585 (Use 045-620-7243 for some of mobile, IP phone or international call.)

※Please submit the transcript of the TOEIC L&R, TOEFL iBT or IELTS taken after January 2024.

## 4. Application period

※Application must be received by the due date.

Faculty	Application period
Faculty of International Resource Sciences	December 17 (Wed.) – December 19 (Fri.), 2025
Faculty of Education and Human Studies	
Faculty of Integrated Science and Engineering for Environments	
Faculty of Informatics and Data Science	
Faculty of Medicine	January 26 (Mon.) – January 28 (Wed.), 2026

## 5. Date of examination and announcement of results

※Application must be received by the due date.

Faculty	Date of examination	Date of announcement of results	Period of enrollment
Faculty of International Resource Sciences	January 23 (Fri.), 2026	February 11 (Wed.), 2026	February 17 (Tue.) – February 18 (Wed.), 2026
Faculty of Education and Human Studies			
Faculty of Integrated Science and Engineering for Environments			
Faculty of Informatics and Data Science			
Faculty of Medicine	School of Medicine : February 25 (Wed.) – February 26 (Thu.), 2026 School of Health Sciences : February 25 (Wed.), 2026	March 7 (Sat.), 2026	March 14 (Sat.) – March 15 (Sun.), 2026

### NOTE

- Please notice that the qualifications and the dates of examinations for each faculty are different.
- Those who do not currently have, or are unlikely to obtain the resident status as “Student” in accordance with the Immigration Control and Refugee Recognition Act do not fulfill the criteria and cannot apply the selection.

### Entrance Examinations for Privately-funded International Students through the Pre-Arrival Admission System (Faculty of Integrated Science and Engineering for Environments)

Pre-Arrival Admission System is a system for entrance admission based on the overall evaluation of the Examination for Japanese University Admission for International Students (EJU) conducted by the Japan Student Services Organization (JASSO) (**Applicants are required to take the test outside Japan**) and other relevant academic performances (including high school transcript and TOEFL score). This system enables applicants to obtain the entrance admission for Akita University without taking any examinations in Japan. For further details please see "Application guideline for Privately-funded International Students through the Pre-Arrival Admission System."

[How to submit an application] Please download the application form from the Akita University website (<https://www.akita-u.ac.jp/>). Complete the form and send it by postal mail.

Announcement of Application guideline	Application period	Announcement of results	Period of enrollment
From early July 2025	September 5 (Fri.) – September 11 (Thu.), 2025	November 4 (Tue.), 2025	November 25 (Tue.) – November 28 (Fri.), 2025

### Special Entrance Examination for International Students (Faculty of International Resource Sciences)

The "Special Entrance Examination for International Students" is an admission system that allows applicants to be screened through application documents (such as English proficiency test scores) and an online interview, without the need to enter Japan. For further details, please refer to the "Application Guidelines for Special Entrance Examination for International Students."

[How to submit an application] Please download the application form from the Akita University website (<https://www.akita-u.ac.jp/>) Please complete the required information, send the documents by postal mail, and also send a scanned electronic copy of the application documents by email.

Application Period	Date of examination	Date of announcement of results	Period of enrollment
November 4 (Tue.) – November 27 (Thu.), 2025	December 19 (Fri.), 2025	December 26 (Fri.), 2025	March 16 (Mon.) – March 23 (Mon.), 2026

[Reference: Japanese Government (MEXT) Scholarship: Special Program for Preferential Placement of Japanese Government Scholarship Students]

The Faculty of International Resource Sciences is scheduled to apply for the "Special Program for Priority Allocation of Japanese Government (MEXT) Scholarships" for international students enrolling in April 2026.

### International Baccalaureate Admissions

(Faculty of International Resource Sciences /Faculty of Education and Human Studies/Faculty of Integrated Science and Engineering for Environments /Faculty of Informatics and Data Science)

Faculty	Application Period	Date of Examination	Date of Announcement of results	Enrollment Procedures
Faculty of International Resource Sciences	September 5 (Fri.) – September 11 (Thu.), 2025	October 4 (Sat.), 2025	November 4 (Tue.), 2025	November 10 (Mon.) – November 13 (Thu.), 2025
Faculty of Education and Human Studies				
Faculty of Integrated Science and Engineering for Environments				
Faculty of Informatics and Data Science		October 11 (Sat.), 2025		

Contact: Admissions Office, Akita University

TEL:+81-18-889-2256 FAX:+81-18-835-9924

<https://www.akita-u.ac.jp/admission/> E-mail : nyushi@jimu.akita-u.ac.jp