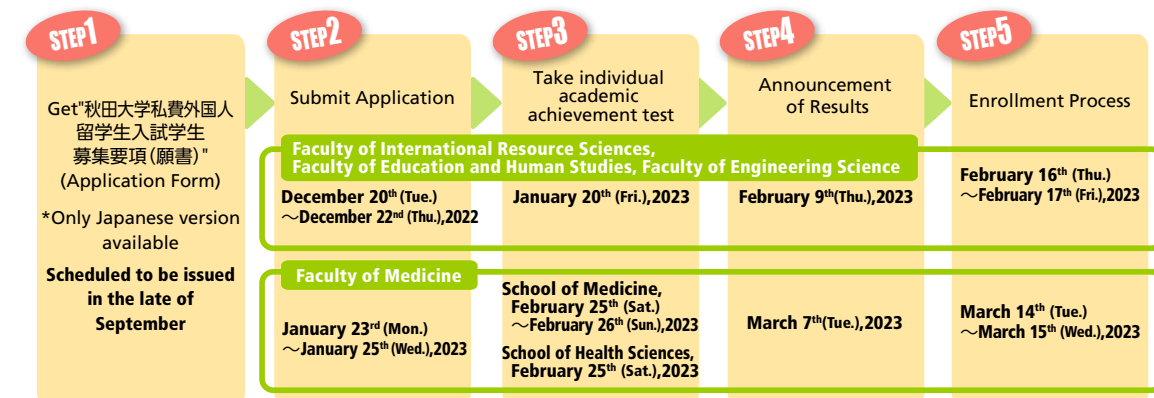


Undergraduate Application (for self-funded international students)

Applicants must take the Examination for Japanese University Admission for International Students conducted by Japan Student Services Organization (JASSO) prior to submitting their application.



Graduate School Application

Conditions and schedule for application vary between each graduate school. Please see the websites of each graduate school for information.

Graduate School of International Resource Sciences : <https://www.akita-u.ac.jp/shigen/graduate/info.html>
 Graduate School of Medicine : <http://www.med.akita-u.ac.jp/departement/gs/kenkyu-selection.html>
 Graduate School of Engineering Science : <https://www.riko.akita-u.ac.jp/graduate/prospectus/>

How to request the Application Form ("秋田大学私費外国人留学生入試学生募集要項")

*Only Japanese version available

Akita University Website for Applicants
<https://www.akita-u.ac.jp/eng/exam/>

Admission

Entrance Examination Guidelines

Student Application Guidelines
 (Entrance Examinations for self-funded international students)



Access



From Tokyo

● Haneda Airport - Akita Airport (1hr 5mins)
 ● JR Tokyo Station - Akita Station (approx. 4hrs by Komachi, Akita Shinkansen)

From Nagoya

● Chubu Int'l Airport - Akita Airport (approx. 1hr 25mins)

From Osaka

● Osaka Int'l Airport (Itami) - Akita Airport (approx. 1hr 20mins)

From Sapporo

● New Chitose Airport - Akita Airport (55mins)



Akita University

Akita University Global Center for Higher Education

1-1 Tegatagakuen-machi, Akita City, Akita 010-8502
 TEL+81-18-889-2258 FAX+81-18-889-3012
 E-mail : ryugaku@jimbu.akita-u.ac.jp
<https://www.akita-u.ac.jp/honbu/inter/index.html>

Published in August 2021



Guide for International Students



Akita University



Akita University

Akita University is a comprehensive national university consisting of both undergraduate and graduate programs. Formerly known as Akita Normal School, Akita Youth Normal School, and Akita Mining College, it was later established as Akita University in 1949.

Student Figures (as of May 1, 2022)

◆ Students: 5,147 (Undergraduate 4,331, Graduate 816)

◆ International Students: 229 (Undergraduate 127, Graduate 102) *The figure includes degree seeking international students.

Faculties	Total number admitted	International Students		
		Degree-seeking	Non Degree-seeking	Total
International Resource Sciences	519	7	9	16
Education and Human Studies	891	7	12	19
Medicine	1,211	1	0	1
Engineering Science	1,710	90	1	91
Total	4,331	105	22	127

Graduate Schools	Total number admitted	International Students		
		Degree-seeking	Non Degree-seeking	Total
International Resource Sciences	134	56	1	57
Education	37	0	0	0
Medicine	221	4	0	4
Engineering Science	409	40	1	41
Advanced Health Care Engineering	15	0	0	0
Total	816	100	2	102

Overseas Partner Universities (as of May 1, 2022)

Inter-University Agreements

● 68 Universities (33 Countries and Regions)

Countries/Regions	Universities	Student Exchange Agreement
Asia	India	Indian Institute of Technology Madras ● Vellore Institute of Technology ● Institut Teknologi Bandung ● Trisakti University ●
	Indonesia	Universitas Gadjah Mada ● Universitas Pertamina ● Padjadjaran University ● Hanbat National University ● Wonkwang University ● Kangwon National University ● Chulalongkorn University ● Suranaree University of Technology ● Chiang Mai University ●
	Korea	Lungshwa University of Science and Technology ● National Taiwan University ● National Changhua University of Education ● Heilongjiang University ● Central South University ● Liaoning Technical University ● Dalian Minzu University ● Lanzhou University ● Jilin University ● Northeastern University ● Donghua University ● Tongji Medical College Huazhong University of Science and Technology ● Chang'an University ● Beihua University ● Jiaxing University ● Northwest Normal University ● University of the Philippines Diliman ● University of the Philippines Manila ● University of the Philippines Los Baños ● Hanoi University of Science and Technology ● University of Transport and Communications ● Malaysia Universiti of Malaya ● Myanmar University of Yangon ●
	Thailand	Suranaree University of Technology ● Chiang Mai University ●
	Taiwan	Lungshwa University of Science and Technology ● National Taiwan University ● National Changhua University of Education ●
	China	Heilongjiang University ● Central South University ● Liaoning Technical University ● Dalian Minzu University ● Lanzhou University ● Jilin University ● Northeastern University ● Donghua University ● Tongji Medical College Huazhong University of Science and Technology ● Chang'an University ● Beihua University ● Jiaxing University ● Northwest Normal University ● University of the Philippines Diliman ● University of the Philippines Manila ● University of the Philippines Los Baños ● Hanoi University of Science and Technology ● University of Transport and Communications ● Malaysia Universiti of Malaya ● Myanmar University of Yangon ●
	Philippines	University of the Philippines Diliman ● University of the Philippines Manila ● University of the Philippines Los Baños ● Hanoi University of Science and Technology ● University of Transport and Communications ● Malaysia Universiti of Malaya ● Myanmar University of Yangon ●
	Vietnam	Hanoi University of Science and Technology ● University of Transport and Communications ● Malaysia Universiti of Malaya ● Myanmar University of Yangon ●
	Malaysia	Universiti of Malaya ● University of Yangon ●
	Myanmar	University of Yangon ●
	Thailand	Suranaree University of Technology ● Chiang Mai University ●
	Taiwan	Lungshwa University of Science and Technology ● National Taiwan University ● National Changhua University of Education ●
	China	Heilongjiang University ● Central South University ● Liaoning Technical University ● Dalian Minzu University ● Lanzhou University ● Jilin University ● Northeastern University ● Donghua University ● Tongji Medical College Huazhong University of Science and Technology ● Chang'an University ● Beihua University ● Jiaxing University ● Northwest Normal University ● University of the Philippines Diliman ● University of the Philippines Manila ● University of the Philippines Los Baños ● Hanoi University of Science and Technology ● University of Transport and Communications ● Malaysia Universiti of Malaya ● Myanmar University of Yangon ●
	Philippines	University of the Philippines Diliman ● University of the Philippines Manila ● University of the Philippines Los Baños ● Hanoi University of Science and Technology ● University of Transport and Communications ● Malaysia Universiti of Malaya ● Myanmar University of Yangon ●
	Vietnam	Hanoi University of Science and Technology ● University of Transport and Communications ● Malaysia Universiti of Malaya ● Myanmar University of Yangon ●
	Malaysia	Universiti of Malaya ● University of Yangon ●
	Myanmar	University of Yangon ●
	Thailand	Suranaree University of Technology ● Chiang Mai University ●
	Taiwan	Lungshwa University of Science and Technology ● National Taiwan University ● National Changhua University of Education ●
	China	Heilongjiang University ● Central South University ● Liaoning Technical University ● Dalian Minzu University ● Lanzhou University ● Jilin University ● Northeastern University ● Donghua University ● Tongji Medical College Huazhong University of Science and Technology ● Chang'an University ● Beihua University ● Jiaxing University ● Northwest Normal University ● University of the Philippines Diliman ● University of the Philippines Manila ● University of the Philippines Los Baños ● Hanoi University of Science and Technology ● University of Transport and Communications ● Malaysia Universiti of Malaya ● Myanmar University of Yangon ●
	Philippines	University of the Philippines Diliman ● University of the Philippines Manila ● University of the Philippines Los Baños ● Hanoi University of Science and Technology ● University of Transport and Communications ● Malaysia Universiti of Malaya ● Myanmar University of Yangon ●
	Vietnam	Hanoi University of Science and Technology ● University of Transport and Communications ● Malaysia Universiti of Malaya ● Myanmar University of Yangon ●
	Malaysia	Universiti of Malaya ● University of Yangon ●
	Myanmar	University of Yangon ●
	Thailand	Suranaree University of Technology ● Chiang Mai University ●
	Taiwan	Lungshwa University of Science and Technology ● National Taiwan University ● National Changhua University of Education ●
	China	Heilongjiang University ● Central South University ● Liaoning Technical University ● Dalian Minzu University ● Lanzhou University ● Jilin University ● Northeastern University ● Donghua University ● Tongji Medical College Huazhong University of Science and Technology ● Chang'an University ● Beihua University ● Jiaxing University ● Northwest Normal University ● University of the Philippines Diliman ● University of the Philippines Manila ● University of the Philippines Los Baños ● Hanoi University of Science and Technology ● University of Transport and Communications ● Malaysia Universiti of Malaya ● Myanmar University of Yangon ●
	Philippines	University of the Philippines Diliman ● University of the Philippines Manila ● University of the Philippines Los Baños ● Hanoi University of Science and Technology ● University of Transport and Communications ● Malaysia Universiti of Malaya ● Myanmar University of Yangon ●
	Vietnam	Hanoi University of Science and Technology ● University of Transport and Communications ● Malaysia Universiti of Malaya ● Myanmar University of Yangon ●
	Malaysia	Universiti of Malaya ● University of Yangon ●
	Myanmar	University of Yangon ●

Countries/Regions	Universities	Student Exchange Agreement
Asia	India	Indian Institute of Technology Madras ● Vellore Institute of Technology ● Institut Teknologi Bandung ● Trisakti University ●
	Indonesia	Universitas Gadjah Mada ● Universitas Pertamina ● Padjadjaran University ● Hanbat National University ● Wonkwang University ● Kangwon National University ● Chulalongkorn University ● Suranaree University of Technology ● Chiang Mai University ●
	Korea	Lungshwa University of Science and Technology ● National Taiwan University ● National Changhua University of Education ● Heilongjiang University ● Central South University ● Liaoning Technical University ● Dalian Minzu University ● Lanzhou University ● Jilin University ● Northeastern University ● Donghua University ● Tongji Medical College Huazhong University of Science and Technology ● Chang'an University ● Beihua University ● Jiaxing University ● Northwest Normal University ● University of the Philippines Diliman ● University of the Philippines Manila ● University of the Philippines Los Baños ● Hanoi University of Science and Technology ● University of Transport and Communications ● Malaysia Universiti of Malaya ● Myanmar University of Yangon ●
	Thailand	Suranaree University of Technology ● Chiang Mai University ●
	Taiwan	Lungshwa University of Science and Technology ● National Taiwan University ● National Changhua University of Education ●
	China	Heilongjiang University ● Central South University ● Liaoning Technical University ● Dalian Minzu University ● Lanzhou University ● Jilin University ● Northeastern University ● Donghua University ● Tongji Medical College Huazhong University of Science and Technology ● Chang'an University ● Beihua University ● Jiaxing University ● Northwest Normal University ● University of the Philippines Diliman ● University of the Philippines Manila ● University of the Philippines Los Baños ● Hanoi University of Science and Technology ● University of Transport and Communications ● Malaysia Universiti of Malaya ● Myanmar University of Yangon ●
	Philippines	University of the Philippines Diliman ● University of the Philippines Manila ● University of the Philippines Los Baños ● Hanoi University of Science and Technology ● University of Transport and Communications ● Malaysia Universiti of Malaya ● Myanmar University of Yangon ●
	Vietnam	Hanoi University of Science and Technology ● University of Transport and Communications ● Malaysia Universiti of Malaya ● Myanmar University of Yangon ●
	Malaysia	Universiti of Malaya ● University of Yangon ●
	Myanmar	University of Yangon ●
	Thailand	Suranaree University of Technology ● Chiang Mai University ●
	Taiwan	Lungshwa University of Science and Technology ● National Taiwan University ● National Changhua University of Education ●
	China	Heilongjiang University ● Central South University ● Liaoning Technical University ● Dalian Minzu University ● Lanzhou University ● Jilin University ● Northeastern University ● Donghua University ● Tongji Medical College Huazhong University of Science and Technology ● Chang'an University ● Beihua University ● Jiaxing University ● Northwest Normal University ● University of the Philippines Diliman ● University of the Philippines Manila ● University of the Philippines Los Baños ● Hanoi University of Science and Technology ● University of Transport and Communications ● Malaysia Universiti of Malaya ● Myanmar University of Yangon ●
	Philippines	University of the Philippines Diliman ● University of the Philippines Manila ● University of the Philippines Los Baños ● Hanoi University of Science and Technology ● University of Transport and Communications ● Malaysia Universiti of Malaya ● Myanmar University of Yangon ●
	Vietnam	Hanoi University of Science and Technology ● University of Transport and Communications ● Malaysia Universiti of Malaya ● Myanmar University of Yangon ●
	Malaysia	Universiti of Malaya ● University of Yangon ●
	Myanmar	University of Yangon ●
	Thailand	Suranaree University of Technology ● Chiang Mai University ●
	Taiwan	Lungshwa University of Science and Technology ● National Taiwan University ● National Changhua University of Education ●
	China	Heilongjiang University ● Central South University ● Liaoning Technical University ● Dalian Minzu University ● Lanzhou University ● Jilin University ● Northeastern University ● Donghua University ● Tongji Medical College Huazhong University of Science and Technology ● Chang'an University ● Beihua University ● Jiaxing University ● Northwest Normal University ● University of the Philippines Diliman ● University of the Philippines Manila ● University of the Philippines Los Baños ● Hanoi University of Science and Technology ● University of Transport and Communications ● Malaysia Universiti of Malaya ● Myanmar University of Yangon ●
	Philippines	University of the Philippines Diliman ● University of the Philippines Manila ● University of the Philippines Los Baños ● Hanoi University of Science and Technology ● University of Transport and Communications ● Malaysia Universiti of Malaya ● Myanmar University of Yangon ●
	Vietnam	Hanoi University of Science and Technology ● University of Transport and Communications ● Malaysia Universiti of Malaya ● Myanmar University of Yangon ●
	Malaysia	Universiti of Malaya ● University of Yangon ●
	Myanmar	University of Yangon ●
	Thailand	Suranaree University of Technology ● Chiang Mai University ●
	Taiwan	Lungshwa University of Science and Technology ● National Taiwan University ● National Changhua University of Education ●
	China	Heilongjiang University ● Central South University ● Liaoning Technical University ● Dalian Minzu University ● Lanzhou University ● Jilin University ● Northeastern University ● Donghua University ● Tongji Medical College Huazhong University of Science and Technology ● Chang'an University ● Beihua University ● Jiaxing University ● Northwest Normal University ● University of the Philippines Diliman ● University of the Philippines Manila ● University of the Philippines Los Baños ● Hanoi University of Science and Technology ● University of Transport and Communications ● Malaysia Universiti of Malaya ● Myanmar University of Yangon ●
	Philippines	University of the Philippines Diliman ● University of the Philippines Manila ● University of the Philippines Los Baños ● Hanoi University of Science and Technology ● University of Transport and Communications ● Malaysia Universiti of Malaya ● Myanmar University of Yangon ●
	Vietnam	Hanoi University of Science and Technology ● University of Transport and Communications ● Malaysia Universiti of Malaya ● Myanmar University of Yangon ●
	Malaysia	Universiti of Malaya ● University of Yangon ●
	Myanmar	University of Yangon ●

Inter-Faculty Agreements

● 34 Faculties (20 Countries and Regions)

Faculties	Countries/Regions	Faculties, Universities	Student Exchange Agreement
Graduate School of International Resource Sciences	Asia	Indonesia	Faculty of Engineering, Hasanuddin University ● Faculty of Geological Engineering, Universitas Padjadjaran ●
		Thailand	Faculty of Mineral Technology Universitas Pembangunan Nasional "Veteran" Yogyakarta ●
	Africa	Sudan	Faculty of Science, Kasersart University ● Faculty of Earth Sciences Faculty of Marine Sciences and Fisheries, Red Sea University ●
		Serbia	Technical Faculty in Bor, University of Belgrade ● National Institute of Chemistry, Technology and Metallurgy, University of Belgrade ●
	Europe (including NIS countries)	Poland	The AGH University of Science and Technology ● Uzbek-Japan Innovation Center of Youth (UJICY) ●
		Uzbekistan	Uzbek-Japan Innovation Center of Youth (UJICY) ● Navoi State Mining Institute ●
	North America	Tajikistan	Centre of Innovative Development of Science and New Technologies, National Academy of Sciences of Tajikistan ● Institut National de la recherche scientifique, Université du Québec ●
		Canada	Korean Language School of Sungkonghoe University ● Beijing Hospital, Ministry of Health ●
	Asia	China	Alice Lee Center for Nursing Studies, Yong Loo Lin School of Medicine, National University of Singapore ● School of Nursing Suranaree University of Technology ● The Faculty of Medicine of Lille 2 University ● John A. Burns School of Medicine, University of Hawaii at Manoa ● MD Anderson Cancer Center, University of Texas ●
		USA	The First Hospital of Lanzhou University ●
Graduate School of Medicine	Asia	Taiwan	College of Engineering Minghai University of Science and Technology ● Department of Precision Instruments and Mechanology, Tsing Hua University ● Department of Chemistry, Tsing Hua University ● School of Materials Science and Engineering, Tongji University ● Shanghai Key Lab of D&A for Metal Functional Materials, Tongji University ●
		India	The CSIR-Indian Institute of Chemical Technology ●
	Malaysia	Malaysia	Malaysia Japan International Institute of Technology, Universiti Teknologi Malaysia ● Faculty of Technology, University of Sfax ●
		New Zealand	Faculty of Design and Creative Technologies, Auckland University of Technology (AUT) ●
	North America	USA	Montana College of Mineral Science and Technology ● Faculty of Informatics, University of Debrecen ●
		Hungary	Faculty of Mathematics, Physics and Informatics, Comenius University ●
	Europe	Slovakia	Shanghai Key Lab of D&A for Metal Functional Materials, Tongji University ●
		China	
	Asia	China	
Akita University Hospital	Asia	Indonesia	Faculty of Engineering, Hasanuddin University ● Faculty of Geological Engineering, Universitas Padjadjaran ●
		Thailand	Faculty of Mineral Technology Universitas Pembangunan Nasional "Veteran" Yogyakarta ●
	Africa	Sudan	Faculty of Science, Kasersart University ● Faculty of Earth Sciences Faculty of Marine Sciences and Fisheries, Red Sea University ●
		Serbia	Technical Faculty in Bor, University of Belgrade ● National Institute of Chemistry, Technology and Metallurgy, University of Belgrade ●
	Europe (including NIS countries)	Poland	The AGH University of Science and Technology ● Uzbek-Japan Innovation Center of Youth (UJICY) ●
		Uzbekistan	Uzbek-Japan Innovation Center of Youth (UJICY) ● Navoi State Mining Institute ●
	North America	Tajikistan	Centre of Innovative Development of Science and New Technologies, National Academy of Sciences of Tajikistan ● Institut National de la recherche scientifique, Université du Québec ●
		Canada	Korean Language School of Sungkonghoe University ● Beijing Hospital, Ministry of Health ●
	Asia	China	Alice Lee Center for Nursing Studies, Yong Loo Lin School of Medicine, National University of Singapore ● School of Nursing Suranaree University of Technology ● The Faculty of Medicine of Lille 2 University ● John A. Burns School of Medicine, University of Hawaii at Manoa ● MD Anderson Cancer Center, University of Texas ●
		USA	The First Hospital of Lanzhou University ●
Center for Regional Development	Asia	Taiwan	College of Engineering Minghai University of Science and Technology ● Department of Precision Instruments and Mechanology, Tsing Hua University ● Department of Chemistry, Tsing Hua University ● School of Materials Science and Engineering, Tongji University ● Shanghai Key Lab of D&A for Metal Functional Materials, Tongji University ●
		India	The CSIR-Indian Institute of Chemical Technology ●
	Malaysia	Malaysia	Malaysia Japan International Institute of Technology, Universiti Teknologi Malaysia ● Faculty of Technology, University of Sfax ●
		New Zealand	Faculty of Design and Creative Technologies, Auckland University of Technology (AUT) ●
	North America	USA	Montana College of Mineral Science and Technology ● Faculty of Informatics, University of Debrecen ●
		Hungary	Faculty of Mathematics, Physics and Informatics, Comenius University ●
	Europe	Slovakia	Shanghai Key Lab of D&A for Metal Functional Materials, Tongji University ●
		China	
	Asia	China	

※Student Exchange based on Inter-Faculty Agreements are vary by faculty.



春 Spring

Akita

An abundance of nature and traditional culture changing along with the four seasons.

Akita Prefecture is located in northern Honshu on the Sea of Japan. It offers a rich natural environment including the Shirakami mountain range (a World Heritage site), Lake Tazawa (the deepest lake in Japan), Hachimantai, and Oga Peninsula, where the four seasons can be distinctly experienced and enjoyed. Akita's seasonal festivities include the Sakura (cherry blossom) festivals in spring, Kanto festival (one of the three great Tohoku festivals) in summer, viewing fall foliage in autumn, and a variety snow sports (skiing, snowboarding, etc.) in winter.

The university's campus is located in Akita City with a population of 300,000. It is the capital of Akita Prefecture, and is also the prefecture's political and economic center. It is convenient in terms of transportation and has a lower cost of living than Tokyo. Students find the city a very suitable environment for daily life.



Kanto Festival

Held every year from August 3 – 6 in Akita City. The largest Kanto Pole is 12 meters in height and weighs approximately 50 kgs. Balancing the giant Kanto using their hands, lower back and forehead, the dancers display their skills while competing with one another. The university also has a kanto team.



Namahage Event

An ethnic tradition originating from the Oga Peninsula, held on New Year's Eve. Namahage are said to be messengers of the gods.



Lake Tazawa

Japan's deepest lake, located in the city of Semboku (Maximum depth 423.4 m). It is approximately 1 hour away from the university and it is a great place to enjoy canoeing or rafting.



Kiritampo

Kiritampo, part of Akita's regional cuisine, is rice that has been mashed and wrapped around a skewer, then toasted and finally cut into easy-to-eat pieces. When it is added to a hot pot with chicken, vegetables, mushrooms, etc. it is called "Kiritampo Nabe" (Kiritampo hot pot).



Onsen (hot springs)

Akita has many hot springs, the most famous being Nyuto Hot Spring Village and Tamagawa Hot Spring. This photo features the open-air bath at Nyuto Hot Spring Village.



秋 Autumn



冬 Winter

Undergraduate



Faculty of International Resource Sciences

Japan is facing problems associated with the allocation of the earth's resources such as economic minerals and petroleum resources. With these challenges in mind, the faculty of International Resource Sciences was launched in 2014 with the purpose of developing global human resources to address these problems.

We provide a unique education experience in resource sciences by offering specialized education in English, overseas resource science fieldwork and an interdisciplinary approach to resource science education.

The faculty consists of 3 programs : The Department of Resource Policy and Management" is to study natural resources from the perspective of humanities and social sciences such as political science, economics and cultural anthropology. The Department of Earth Resource Science cultivates front-line geologists and researchers to predict resource distribution across the globe and explore new possibilities for natural resources. The Department of Earth Resource Engineering and Environmental Science produces engineers and researchers capable of contributing to resource development and recycling technologies.

Department of International Resource Sciences	Resource Policy and Management	Earth Resource Science	Earth Resource Engineering and Environmental Science
---	--------------------------------	------------------------	--

Faculty of Education and Human Studies

The Faculty of Education and Human Studies consists of the Department of School Education and the Department of Regional Studies and Humanities. The Department of School Education focuses on teacher training with particular emphasis on elementary education, which includes pre-school and junior-high school education. The goal of the Department of Regional Studies and Humanities is to produce talented graduates who can play a central role in their local communities in areas such as the local economy, cultural development, and community development and revival.

Department of School Education	Course for Compulsory School Teachers	Course for English Language Teachers	Course for Science and Mathematics Teachers	Course for Special Needs Education Teachers	Course for Child Development and Education
Department of Regional Studies and Humanities	Program in Regional Studies	Program in International Culture Studies	Program in Psychological Studies		

Faculty of Medicine

We are training talented students who are able to maintain an international perspective and who can contribute to people's health and welfare. We do this by first making sure that our students have a broad educational background rooted in the humanities. Our students are flexible and adaptable allowing them to adjust accordingly to the ever advancing fields of medicine and healthcare. Over time our students develop an ability to solve problems, and a firm understanding of medical and health sciences. Other than working as a medical professional in a clinical setting, these programs also offer the possibility of on into graduate school to become a researcher or instructor, or any number of other advanced specialists in the medical field continuing.

School of Medicine	Medicine
School of Health Sciences	Nursing
	Physical Therapy
	Occupational Therapy

Faculty of Engineering Science

The Faculty of Engineering Science has been restructured, placing a greater emphasis on integrating "the sciences", which seek to understand nature through the process of refining and producing resource materials with "engineering", which finds practical applications for refined resources that benefit society. Based on those terms, the Faculty aims to develop talented graduates with logical thinking skills and the ability to realize and implement innovative ideas.

The Faculty consists of 4 departments, which consists of 8 separate courses, as listed below.

Department of Life Science	Life Science Course		
Department of Materials Science	Applied Chemistry Course	Materials Science and Engineering Course	
Department of Mathematical Science and Electrical-Electronic-Computer Engineering	Mathematical Science Course	Electrical and Electronic Engineering Course	Human-Centered Computing Course
Department of Systems Design Engineering	Mechanical Engineering Course	Civil and Environmental Engineering Course	

Graduate

Graduate School of International Resource Sciences

The Graduate School of International Resource Sciences aims to study global resource problems and stimulate critical and creative thinking to develop strategies to help solve problems of energy and resource development, production and distribution. We strongly encourage international students to apply for this program. All lectures are conducted in English, and research activities mainly consist of discussions in English. You can take a course in English in order to get a degree.

Master's Degree Program

Earth Resource Science | Earth Resource Engineering and Environmental Science

Doctoral Degree Program

Geosciences, Geotechnology, and Materials Engineering for Resources

Graduate School of Medicine

The Graduate School of Medicine aims to train excellent researchers and highly specialized medical staff who possess an international perspective, and who can promote the most advanced research in medicine, medical, and life sciences, all of which contribute to the development of human health and welfare.

Master's Degree Program

Medical Science

Master's Degree Program

Health Sciences | Nursing Science | Rehabilitation Science

Doctoral Degree Program

Medicine

Doctoral Degree Program

Health Sciences | Women and Children's Development Support Sciences | Lifestyle Function and Health Support

Graduate School of Engineering Science

The Graduate School of Engineering Science aims to nurture human resources who can systematically acquire advanced specialized knowledge and skills on a fundamental basis, and who can contribute to regional development and the sustainable growth of Japan based on a flexible approach, international perspective and solid ethics.

Master's Degree Program

Life Science
Materials Science
Mathematical Science and Electrical-Electronic-Computer Engineering
Systems Design Engineering
Cooperative Major in Life Cycle Design Engineering

Doctoral Degree Program

Integrated Engineering Science

The Doctoral Degree Program provides a separate English course in which the entire curriculum is conducted in English.

Graduate School of Advanced Healthcare Engineering

Graduate School of Advanced Healthcare Engineering' is a new graduate school established cooperatively with Graduate School of Medicine and Graduate School of Engineering Science of Akita University to integrate each field. We will develop human resources who will support an aging society by conducting education and research that take advantages of the strength of both parties.

Master's Degree Program

Engineering

Admissions

1. Self-funded International Students

Category	Purpose	Notes	Application
Undergraduate Students	Degree Seeking (Bachelor)	Must earn required credits and be enrolled at the University for minimum of 4 years (6 years for medical students).	See the attached "Selection Criteria for Self-funded International Students"
Graduate Students	Degree Seeking (Master/Doctorate)	Take required courses, pass final exams, and pass thesis review. Master's Degree Required to be enrolled in one of the following programs for a minimum of 2 years: Graduate School of International Resource Sciences Program Graduate School of Medicine Program, Graduate School of Engineering Science Program, Graduate School of Advanced Healthcare Engineering Program.	See Graduate Schools' Websites
		Doctoral Degree Health Sciences: 3 years minimum enrollment. Medicine: 4 years minimum enrollment. International Resource Sciences, Engineering Science: 3 years minimum enrollment.	
Exchange Students			
Short-term Exchange Students (Undergraduate, Graduate) Short-term Research Students (Graduate)	Non-degree Seeking	Only available for students enrolled in our partner universities with international student exchange agreements. Required to attend programs from a semester to a year. Undergraduate Credits and transcript of results issued. * Course requirements for completion: 8 classes or more per week (1 class = 90 minutes) and credits Graduate Certificate of course completion issued.	For April start: Apply by late-November of previous calendar year. For October start: Apply by mid-May of the same calendar year.
Non-degree Study Students	Non-degree Seeking	Required to attend regular courses and obtain required grades. * Minimum enrollment of 10hours per week is required for obtaining a student visa.	Inquire directly to each Faculty and Graduate School
Research Students	Preparing for Graduate School	Required to be engaged in research of specific themes under the supervision of an approved advisor.	

2. Japanese Government Sponsored International Students

*See the Ministry of Education, Culture, Sports, Science and Technology website for more information.

Category	Purpose	Notes	Application
Undergraduate Students	Degree Seeking (Bachelor)	Same as "1. Self-funded Undergraduate Students" (above).	Embassy recommendation (apply through overseas Japanese diplomatic office) or University recommendation (consult with your university or graduating university) necessary.
Graduate Students (Research Students)	Degree Seeking (Master/Doctorate)	Same as "1. Self-funded Graduate Students" (above).	
	Non-degree seeking	Same as "1. Self-funded Research Students" (above).	
Japanese Studies Students, "Nikken-sei"	Non-degree Seeking	Complete a 1-year program to improve Japanese language skills and understanding of Japan and its culture.	Embassy recommendation necessary. (apply through overseas Japanese embassies or consulates)
Teacher Training Students, "Kyoken-sei"	Non-degree Seeking	Only applicable for in-service teachers or teachers currently undergoing teacher training in their home country. Taking a Japanese language course is compulsory and students must be able to research under supervision in Japanese.	

*Sufficient Japanese language proficiency is necessary to study at Akita University as most lectures and programs are provided in Japanese.

Financial Support

(1) Deferral of university fees (for privately financed international students)

This system enables students who are considered to have excellent academic prospects but have difficulties paying their entrance fees on time for financial reasons to defer their payments. Students must apply for permission to defer payment prior to beginning their studies at the University.

For details, see "University Fees/Living Expenses/Scholarships" (https://www.akita-u.ac.jp/honbu/life/li_lifesupport.html) or "Akita University Entrance Examination Guidelines for Privately Financed International Students" (to be announced in mid-September) on the Akita University website.

(2) Scholarship

*Scholarships are awarded competitively to students after a review process.

a) International Student Scholarship Program

Program for self-funded international students (excluding exchange students) provided through Japan Student Services Organization (JASSO)

b) Privately Financed Scholarships

Various scholarship programs for self-funded international students (excluding exchange students)

c) Akita University (Scholarship for New University Entrants)

Students who are facing financial difficulties (including self-funded international students) are eligible for a grant payment of up to a maximum of 100,000 yen.

Student Exchange Programs

Only available for international students enrolled in partner universities with an Agreement on Student Exchange.

1 Akita University Academic Japanese Program (AUAJ)

In principle, this is a program for students who have majored in Japanese Language or Japanese Language Education, and have a Japanese language proficiency greater than or equivalent to the Japanese-Language Proficiency Test (JLPT) level N2. The program aims to provide students with advanced Japanese language skills, expertise, and motivation for various academic activities.

Program Length: 1 year
(April to February,
or October to August)

2 Akita University Program for Solving of the Regional Problem (AUSR)

International students will take active roles in exchange activities centered around local events alongside local residents while studying Japanese language and their specialized fields of study in order to meet the aims of the people from Akita. In the second half of the program, students will create and conduct projects which contribute to regional revitalization through activities in which they will cooperate with Japanese students and the local residents.

Program Length: 6 months
or 1 year (starts in April or
October)

3 Akita University General Program (AUGP)

A flexible program for students who do not wish to undertake AUAJ or AUSR. Students can participate in classes of their own choice for either 1 or 2 semesters.

Program Length: 6 months to 1
year (starts in April or October)

Facilities



Cafeteria

Providing meals from
8:00 a.m. to 7:30 p.m. on
weekdays.



Convenience Store

Light meals such as
bentos and drinks are
available here.



Book Store

You can purchase
textbooks, other books
or stationery items
here.



Health Center

Staffed with doctors,
nurses and counselors.



Library

Ample study space.



Multicultural Lounge

International students
are free to use this
space. It's open on
weekdays from 8:30
a.m. until 5:00 p.m.



International Affairs Division

General advice and
guidance are provided for
international students.
If you ever need some
assistance, please come
in for a consultation any
time.

Campus Life

Orientation and Welcome Event for International Students

At Orientation, we provide the efficient information such as administrative procedures at the city hall, the bank, registration for classes, and important points for daily life in Japan etc. We introduce important facilities in our campus tour. We throw a welcome event to incoming international students to offer the occasion to communicate with other international students and faculty members.



April : Orientation and Welcome Event for International Students



April : Orientation and Welcome Event for International Students



December : Mochi (rice cake) Pounding

International Exchange Event with Neighborhood Residents

We held international exchange event with neighborhood residents to deepen mutual understanding.

Tutor System

Soon after international students enter Akita University, they are assigned a student (tutor) who will provide them with necessary support for their studies at the university and their every day life.

Skiing Tour

Every year in February, we arrange a Skiing tour for international students and Japanese students. Instructors will help beginner students enjoy the event.



February : Skiing Tour



October : Farming Tour

Farming Tour

This event is a farming experience program that is held twice in autumn every year. The first one is an "Overnight Farm Stay" held in October, and the second one is a "Harvest Festival Tour" held in November. During the "Overnight Farm Stay" students experience farm work, and take part in a homestay with a farming family. During the "Harvest Festival Tour" students have the opportunity to cook with freshly harvested rice and vegetables.



(1) Tuition (AY2022 enrolled students)

Category	Tuition Fee	Admission Fee	Examination Fee
Undergraduate Students	¥535,800 per year *	¥282,000	¥17,000
Graduate Students	¥535,800 per year *	¥282,000	¥30,000
Short-term Exchange Students Short-term Research Students	Fees are waived based upon the "Agreement on Student Exchange" between Akita University and the partner universities.		
Non-degree Study Students	¥14,800 per credit	¥28,200	¥9,800
Research Students	¥29,700 per month	¥84,600	¥9,800

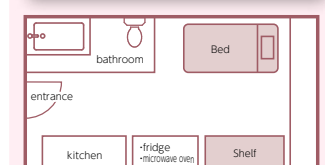
*Annual tuition fee to be paid in two payments (one for each semester.)

*Government Sponsored International Students are waived from tuition/admission/examination fees.

Accommodation

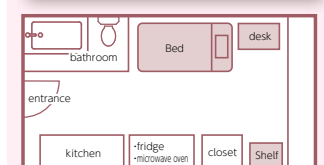
1. Dormitory House for International Students

1 International House "A" and "B"



Boarding fee	(House A) Single occupancy rooms: ¥5,900/month
	(House B) Single occupancy rooms: ¥15,000/month <small>*water, electricity and other living expenses not included</small>
Maximum period of residence	1 year

2 International Student House



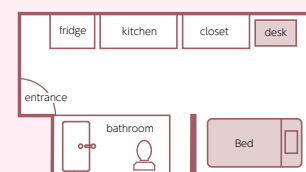
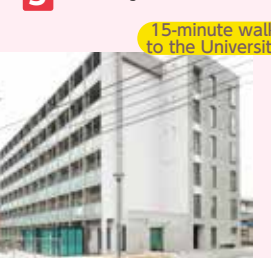
Boarding fee	Single occupancy rooms: ¥5,900/month <small>*water, electricity and other living expenses not included</small>
Maximum period of residence	1 year

Students' Voice

I am satisfied by daily life in the International House, because there are all facilities for a comfortable student's life. It is clean, new and the location is very convenient. Moreover, I can use a big lounge for teatime with my friends.

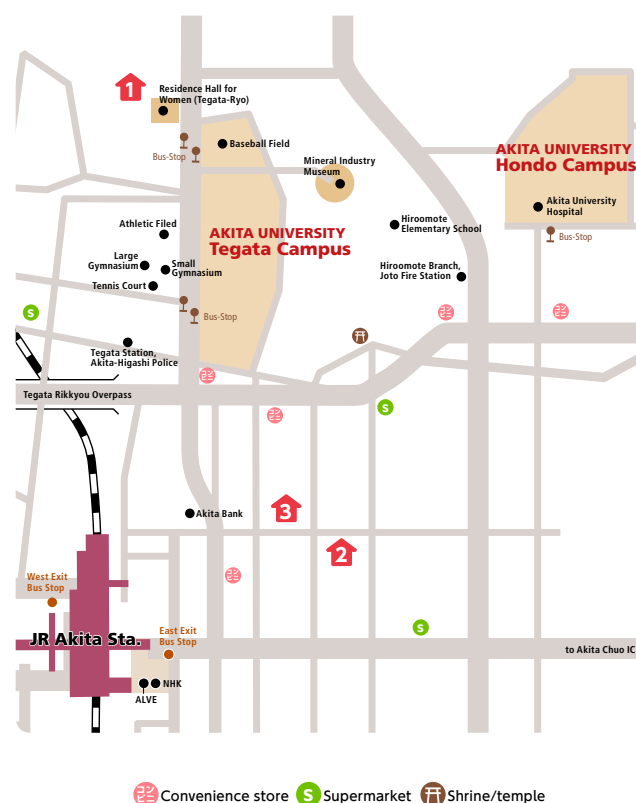
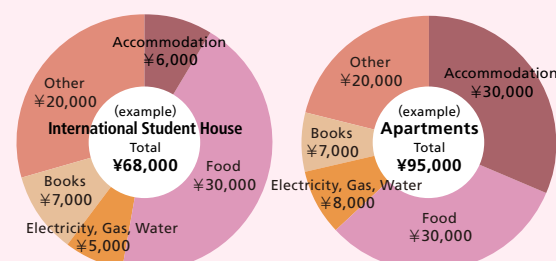
International Student House is as quiet as Akita City. Rent is inexpensive and the location is very good. There are lots of supermarkets around the dormitory and it is very convenient.

3 Nishiyachi Men's Dormitory



Dormitory house for both Japanese and international students. It is available until graduation. Boarding fee is ¥20,000/month.

Rough indication of monthly living expenses



2. Private Apartments

Apartments are usually found through Akita University Co-op or local real estate agents. Rent varies depending on the area or age of the apartment but is generally approximately ¥30,000/month for a 6-jo studio apartment with a kitchen and bathroom. (1-jo = 180cm×90cm)

*2 or 3 months' rent as a deposit and / or "key money" may be required up front for signing a rental contract.

Support for Private Apartments

In the case that students cannot find a guarantor for an apartment lease, Akita University serve as a guarantor. In this case, students have to apply to "Comprehensive Renter's Insurance for Foreign Students Studying in Japan". The insurance costs ¥8,000 for a two year contract.

Message from Seniors



MAI THANH PHUONG (Vietnam)
Faculty of Engineering Science
Department of Materials Science
Applied Chemistry Course

I am glad I chose Akita University

I attended a Japanese language school in Morioka for a year and a half before deciding to apply to Akita University. The first time I came to Akita was the day I took the entrance examination. From that day on, I love Akita.

When I came to Akita for the first time, I was worried because I did not know the way, but a senior student came to pick me up at Akita Station and said "You must be tired from long trip! Are you hungry? Shall we go somewhere to

eat? You can't concentrate if you are hungry before the exam!" It was midwinter, but I felt a warmth that words cannot describe. After the exam, I had to return to Morioka, but I will never forget what happened that day.

As expected, I was able to enter Akita University. I have experienced many things over the past year. One thing I will never forget is that one of my seniors invited me to study together. Back then, I had no friends and studied at home every day, and was about to become a recluse when a senior asked me, "How about Akita? Online classes must be tough, right? If you want, why don't you come to the library to study with us?" Then I became friends with my seniors and was able to go out and make friends. Then, I got the courage to participate in various activities such as speech contests and introduction of Vietnamese culture. I used to be shy and didn't talk to many people, but now I have met many people and can talk a lot. Thanks to my seniors that I am here today.

I would like to convey the warmth I have received to everyone who is thinking of applying to Akita University.



LEIN RICHARD (Germany)
Graduate School of International Resource Sciences
Resource Engineering and Environmental Science

See you in Akita!

Having both the opportunity to be in Akita as an exchange student as well as a graduate student I can tell everyone: come here!

During my time as an exchange student, I got to learn about Japan, its culture and Akita and what makes it such a special place. The university welcomes everyone with open arms and provides many opportunities to get in touch with local people as well. These include farm stays but also trips to several places in Akita. Because I enjoyed my time as an exchange student in Akita so

much I decided to go back to this university for my PhD.

In addition to providing a great experience for exchange students Akita University also provides students great opportunities for research. I started my research in Akita during the Corona pandemic which made it impossible to come to Japan for a long time. Nevertheless, my professor and senior students supported me a lot during this time and welcomed me when I could finally come to Japan.

If you want to experience Japan, its culture, beautiful nature, for are looking for a place for you research with supportive and welcoming people then I can't wait to see you soon in Akita!